

STANDARD DEPARTURE CHART -INSTRUMENT

RJFC / YAKUSHIMA

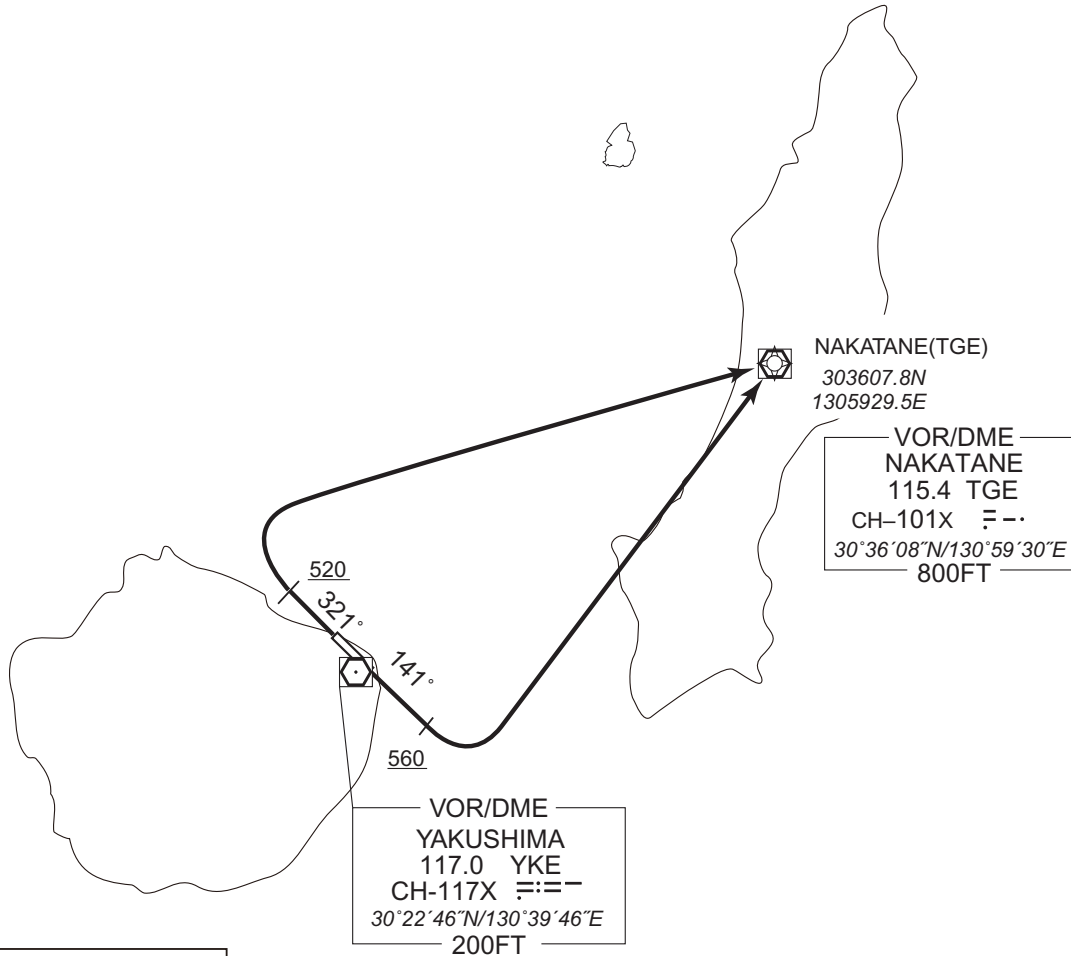
RNAV SID

SURF TWO DEPARTURE

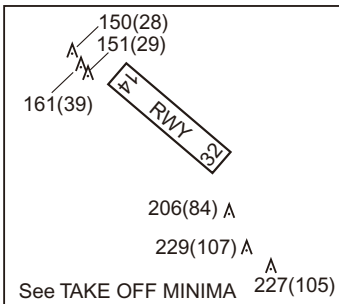
RNP1

Note GNSS required.

VAR 7°W



CHANGE : Navigation Specification(Basic RNP1 → RNP1).



STANDARD DEPARTURE CHART -INSTRUMENT

RJFC / YAKUSHIMA

RNAV SID

SURF TWO DEPARTURE

RWY14 : Climb on HDG 141° at or above 560FT, turn left direct to TGE.

RWY32 : Climb on HDG 321° at or above 520FT, turn right direct to TGE.

Note RWY14 : In case of climbing with 8.8% gradient up to 560FT,
another TKOF WX MINIMA is applicable.

OBST ALT 206FT located at 0.2NM 180° FM end of RWY14.

RWY14

Serial Number	Path Descriptor	Waypoint Identifier	Fly Over	Course °M(°T)	Magnetic Variation	Distance (NM)	Turn Direction	Altitude (FT)	Speed (KIAS)	Vertical Angle	Navigation Specification
001	VA	-	-	141 (134.0)	-6.9	-	-	+560	-	-	RNP1
002	DF	TGE	-	-	-6.9	-	L	-	-	-	RNP1

RWY32

Serial Number	Path Descriptor	Waypoint Identifier	Fly Over	Course °M(°T)	Magnetic Variation	Distance (NM)	Turn Direction	Altitude (FT)	Speed (KIAS)	Vertical Angle	Navigation Specification
001	VA	-	-	321 (314.0)	-6.9	-	-	+520	-	-	RNP1
002	DF	TGE	-	-	-6.9	-	R	-	-	-	RNP1

CHANGE : Navigation Specification(Basic RNP1 → RNP1).