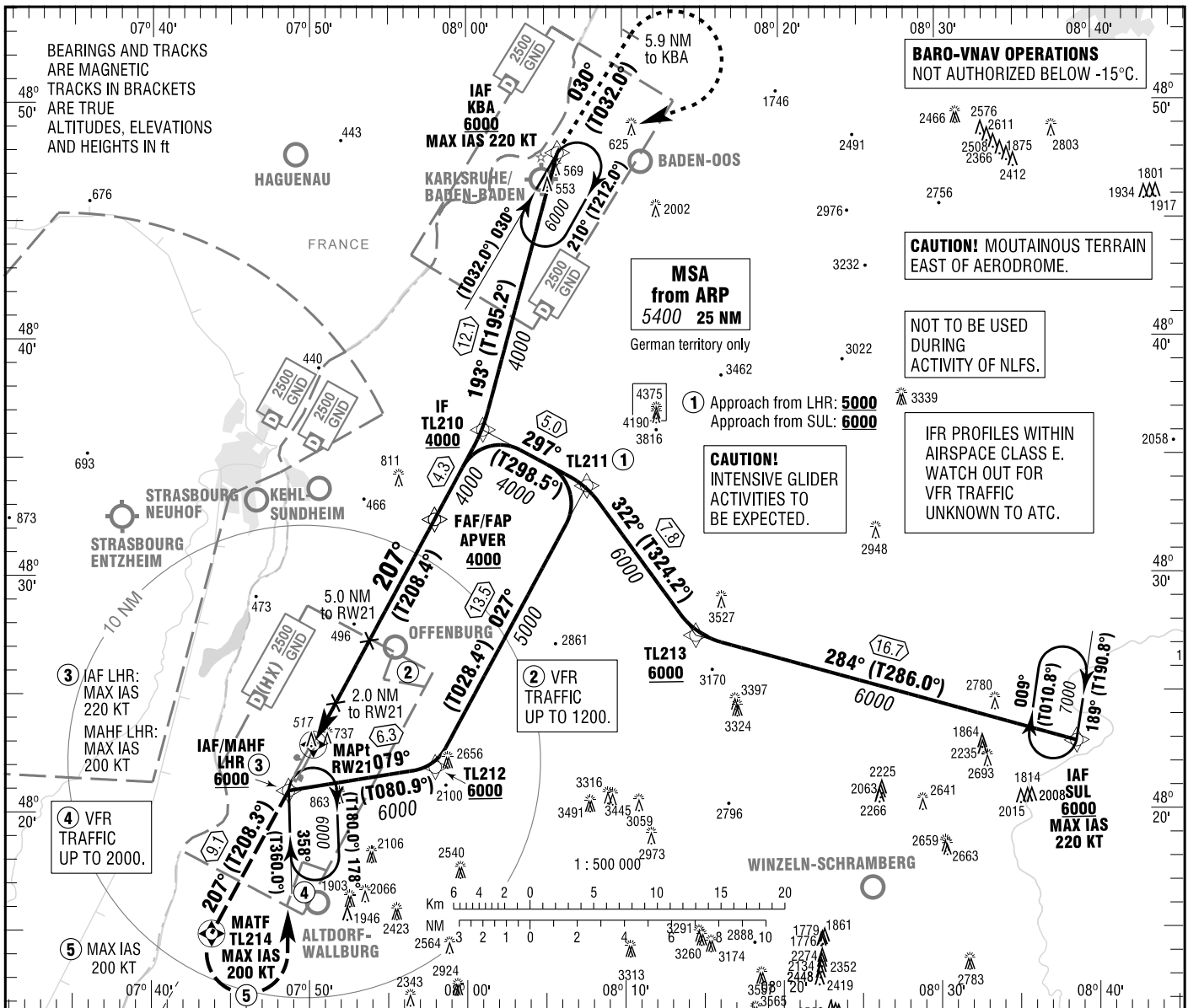


**INSTRUMENT
APPROACH
CHART - ICAO**

VAR 2° E
ELEV 511
OCH RELATED TO
THR 21 ELEV 500

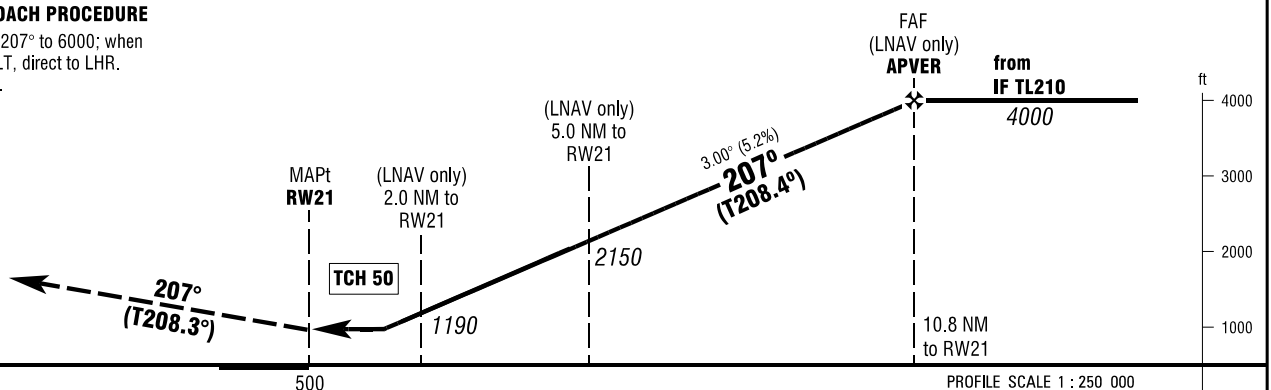
STRASBOURG APPROACH 119.580
LAHR TOWER 125.180

**LAHR
RNP RWY 21
EGNOS CH 73320 E21A**



MISSED APPROACH PROCEDURE

Climb on course 207° to 6000; when passing TL214; LT, direct to LHR. MAX IAS 200 KT.



OCA (OCH)	A	B	C	D	DL
LNAV	980 (480)	980 (480)	980 (480)	980 (480)	
LNAV/VNAV	861 (361)	870 (370)	880 (380)	889 (389)	
LPV	648 (148)	658 (158)	668 (168)	678 (178)	

DIST THR / RW21	2	3	4	5	6	7	8	9	10
ALTITUDE	1190	1510	1830	2150	2470	2780	3100	3420	3740

Timing not authorized for defining the MAPt.

GS	kt	80	100	120	140	160	180
APVER - RW21 (10.8 NM)	MIN:SEC	8:06	6:29	5:24	4:38	4:03	3:36
Rate of descent (5.2%)	ft / MIN	420	530	640	740	850	960

Correction: OCA (H) values, obstacles revised and MSA box.