

TACAN RWY 19

TACAN NCA Chan 101	APCH CRS 199°	Rwy Idg 4789
		TDZE 23
		Arprt Elev 26

[USN] NEW RIVER MCAS (MCCUTCHEON FLD) (KNCA)

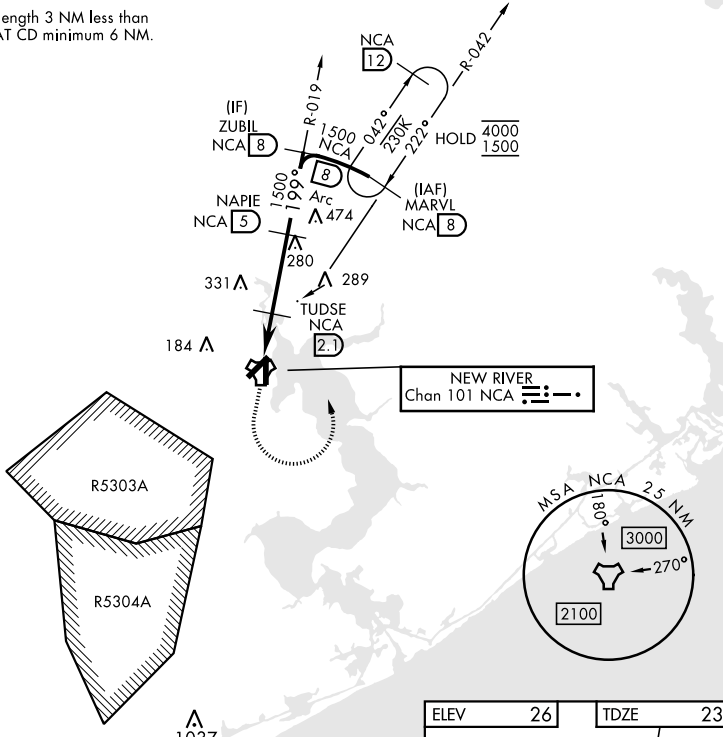
RADAR required

MISSED APPROACH: Climbing left turn to 1500 intercept NCA TACAN R-042 direct MARVL (R-042/8 DME) and hold.

ATIS ★ 288.325	CHERRY POINT APP CON 119.35 377.175	TOWER ★ 134.95(CTAF) 0★ 360.2	GND CON 121.8 254.275	CLNC DEL 269.25	ASR/PAR
-------------------	--	----------------------------------	--------------------------	--------------------	---------

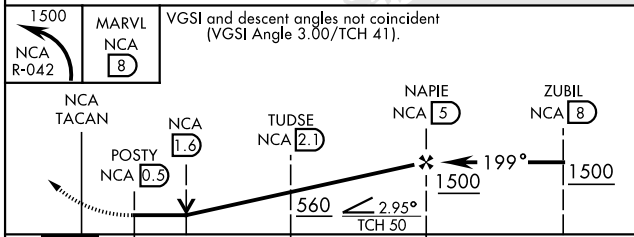
135

CAUTION: Intmed segment length 3 NM less than CAT AB minimum 5 NM; CAT CD minimum 6 NM.

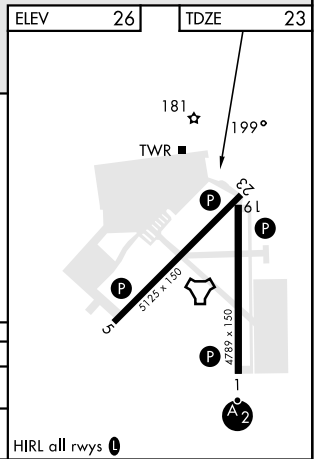


NEW RIVER
Chan 101 NCA

EMERG SAFE ALT 100 NM 3400



CATEGORY	A	B	C	D
S-19	440-1 417 (500-1)		440-1 1/8 417 (500-1 1/8)	
CIRCLING	500-1 474 (500-1)		700-2 674 (700-2)	700-2 1/4 674 (700-2 1/4)



TACAN RWY 19

SE-2, 20 MAR 2025 to 17 APR 2025

SE-2, 20 MAR 2025 to 17 APR 2025