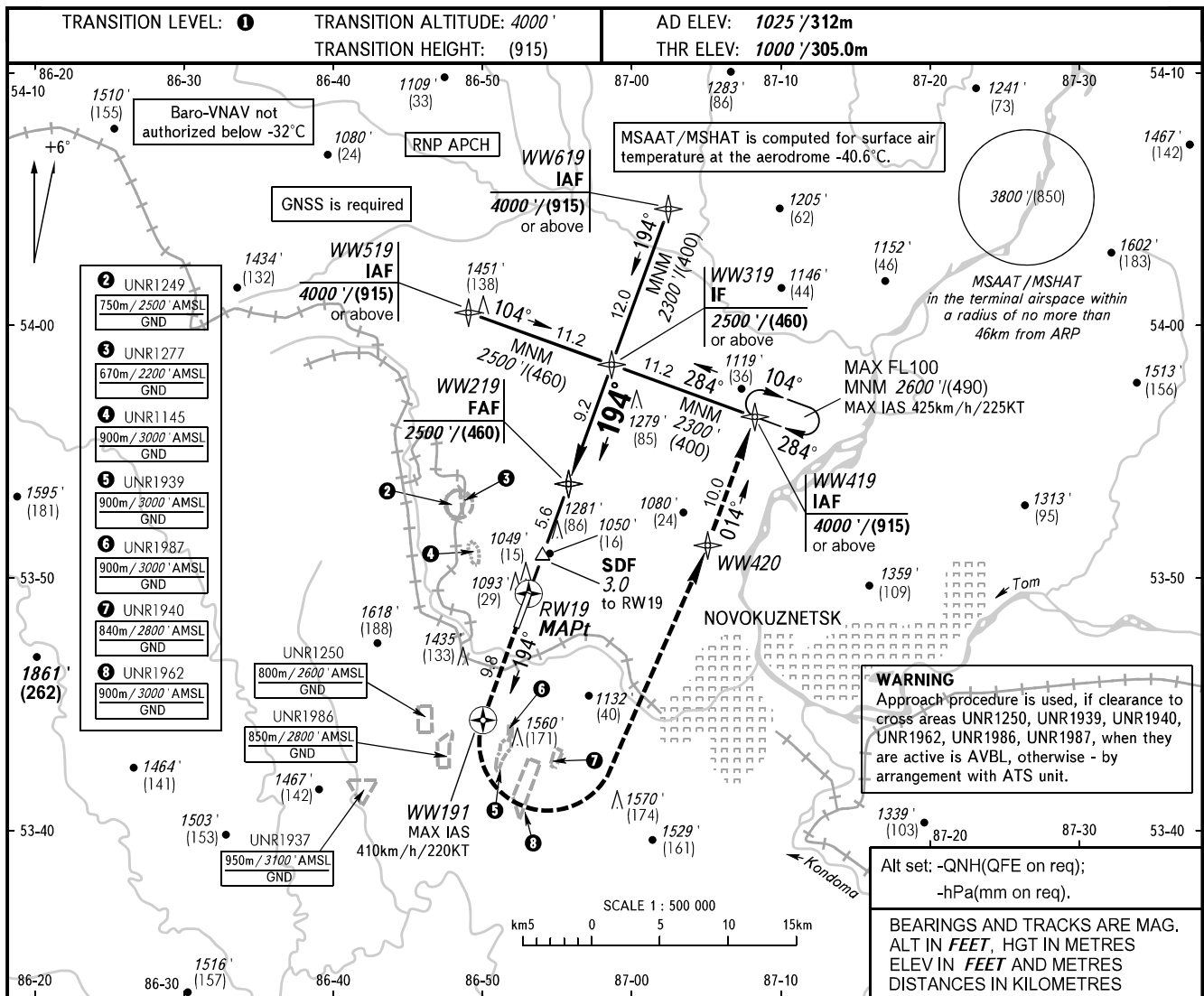


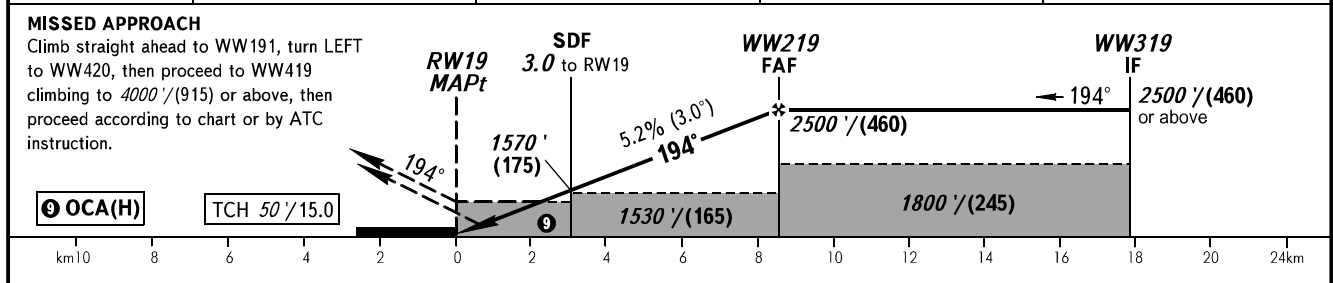
**INSTRUMENT
APPROACH
CHART - ICAO**

APPROACH **118.600**
START **121.200**

NOVOKUZNETSK, RUSSIA
SPICHENKOVO
RNAV RWY 19



| | | | | |
|-----------------|-------------|-------------|-------------|-------------|
| DIST to RW19 | 2.0 | 4.0 | 6.0 | 8.0 |
| ALTITUDE/HEIGHT | 1400'/(125) | 1740'/(230) | 2080'/(330) | 2420'/(435) |



| | | | | | | | | | |
|----------------------|------------|--------------------|--------------------|--------------------|--------------------|---|-----|-----|------|
| Straight-in Approach | LNNAV/VNAV | 1300' (300') (95) | 1310' (310') (95) | 1320' (320') (100) | 1330' (330') (105) | TRANSITION LEVEL: - FL050 when QNH is 1013 hPa (760mm mercury column) or above; - FL060 when QNH is 977 hPa (733mm mercury column) or above, but less than 1013 hPa (760mm mercury column); - FL070 when QNH is less than 977 hPa (733mm mercury column). | | | |
| | LNNAV | 1330' (330') (105) | 1330' (330') (105) | 1330' (330') (105) | 1330' (330') (105) | | | | |
| Circling | | 1560' (530') (165) | 1730' (710') (220) | 1830' (810') (255) | 1960' (940') (295) | | | | |
| GROUND SPEED | km/h | 150 | 180 | 210 | 240 | 270 | 300 | 330 | 360 |
| | kt | 81 | 97 | 113 | 130 | 146 | 162 | 178 | 195 |
| RATE OF DESCENT | m/s | 2.2 | 2.6 | 3.1 | 3.5 | 3.9 | 4.4 | 4.8 | 5.2 |
| | ft/min | 433 | 512 | 610 | 689 | 768 | 866 | 945 | 1024 |