

STANDARD DEPARTURE CHART - INSTRUMENT

RJCO / SAPPORO

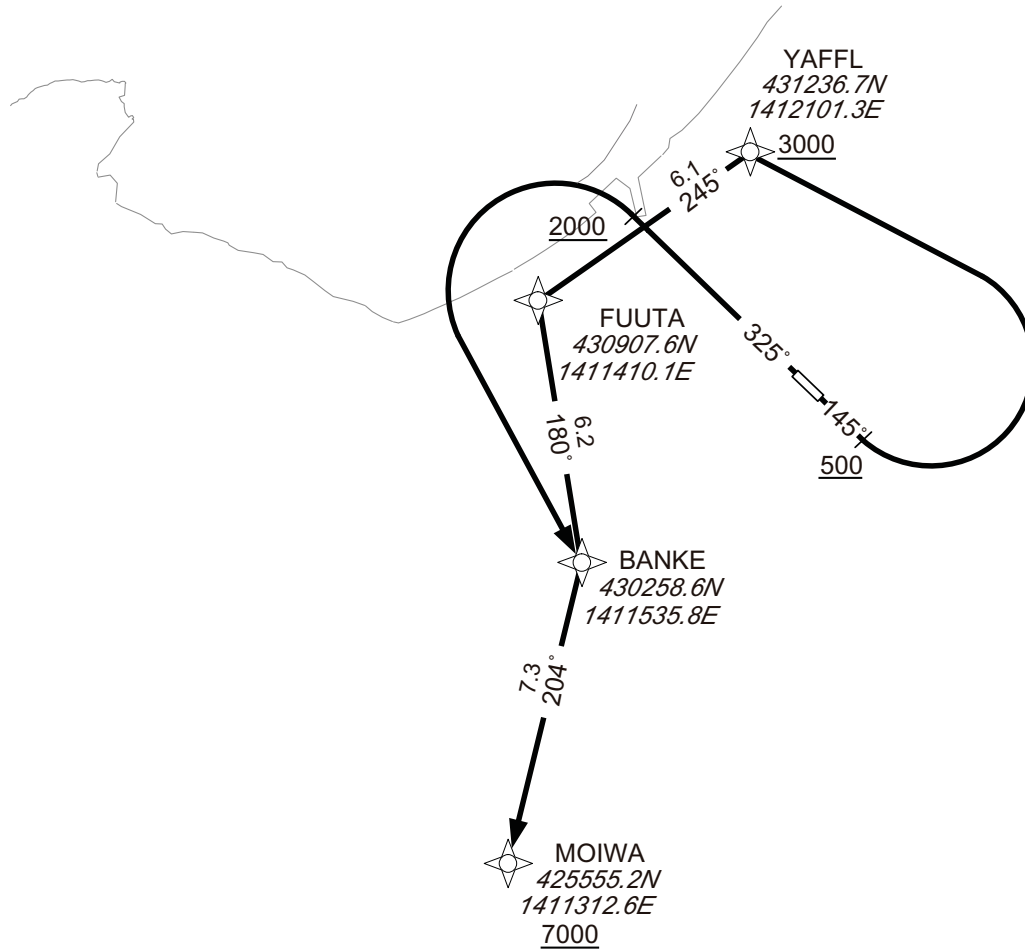
RNAV SID

BANKE ONE DEPARTURE

RNP1

Note GNSS required.

VAR 10° W



CHANGE : Description of PROC name. VAR.

RWY14 : Climb on HDG145° at or above 500FT, turn left direct to YAFFL at or above 3000FT, to FUUTA, to BANKE, to MOIWA at or above 7000FT.

RWY32 : Climb on HDG325° at or above 2000FT, turn left direct to BANKE, to MOIWA at or above 7000FT.

Note RWY14 : 6.0% climb gradient required up to 2200FT.
OBST ALT 2822FT located at 7.8NM 266° FM end of RWY14.

RWY32 : 6.0% climb gradient required up to 4000FT.
OBST ALT 3585FT located at 8.4NM 261° FM end of RWY32.

STANDARD DEPARTURE CHART - INSTRUMENT

RJCO / SAPPORO

RNAV SID

BANKE ONE DEPARTURE

RWY14

Serial Number	Path Descriptor	Waypoint Identifier	Fly Over	Course °M(°T)	Magnetic Variation	Distance (NM)	Turn Direction	Altitude (FT)	Speed (KIAS)	Vertical Angle	Navigation Specification
001	VA	-	-	145 (134.8)	-9.7	-	-	+500	-	-	RNP1
002	DF	YAFFL	-	-	-9.7	-	L	+3000	-	-	RNP1
003	TF	FUUTA	-	245 (235.2)	-9.7	6.1	-	-	-	-	RNP1
004	TF	BANKE	-	180 (170.4)	-9.7	6.2	-	-	-	-	RNP1
005	TF	MOIWA	-	204 (193.9)	-9.7	7.3	-	+7000	-	-	RNP1

RWY32

Serial Number	Path Descriptor	Waypoint Identifier	Fly Over	Course °M(°T)	Magnetic Variation	Distance (NM)	Turn Direction	Altitude (FT)	Speed (KIAS)	Vertical Angle	Navigation Specification
001	VA	-	-	325 (314.8)	-9.7	-	-	+2000	-	-	RNP1
002	DF	BANKE	-	-	-9.7	-	L	-	-	-	RNP1
003	TF	MOIWA	-	204 (193.9)	-9.7	7.3	-	+7000	-	-	RNP1

CHANGE : Navigation Specification(Basic RNP1 → RNP1).