

HI-TACAN Z RWY 36L

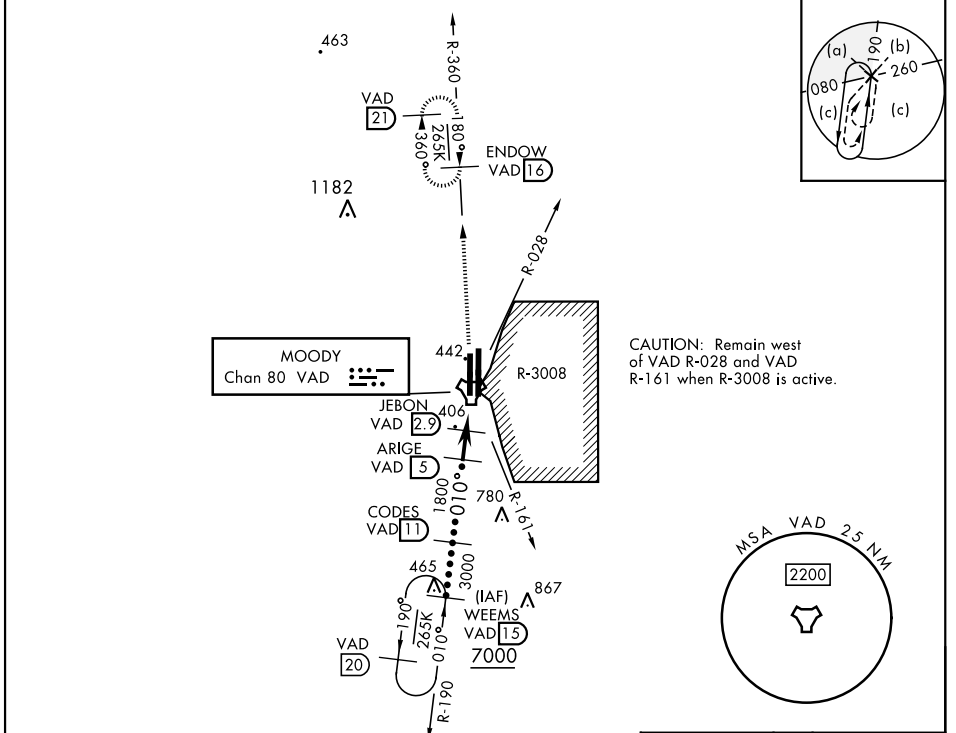
TACAN VAD Chan 80	APCH CRS 010°	Rwy Idg TDZE Arprt Elev 8002 225 233	[USAF]	MOODY AFB (KVAD)
-----------------------------	-------------------------	--	--------	------------------

V * When ALS inop, increase vis to 1¼ miles.

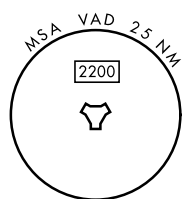
A4

 MISSED APPROACH: Climb to 3000 on VAD TACAN R-360 to ENDOW and hold.

ATIS ★ 273.5	VALDOSTA APP CON 126.6 285.6	TOWER ★ 128.45 (CTAF) 257.625	GND CON 138.95 275.8	CLNC DEL 120.625 296.7
------------------------	--	---	--------------------------------	----------------------------------

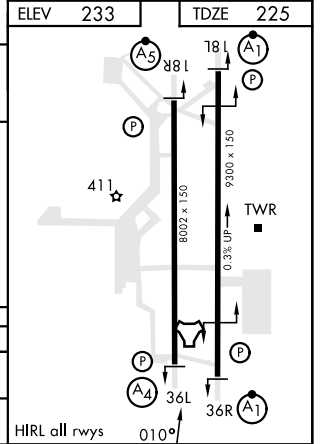


CAUTION: Remain west of VAD R-028 and VAD R-161 when R-3008 is active.



EMERG SAFE ALT 100 NM 3300

WEEMS R-190 15 7000	CODES 11 3000	ARIGE 5 1800	JEBON 2.9 1120	TACAN	3000 VAD R-360	ENDOW VAD 16
†From JEBON †2.99° TCH 50		2.1 NM 2.2 NM 0.5				
CATEGORY	C	D	E			
S-36L *	660/50 435 (500-1)					
CIRCLING	760-1½ 527 (600-1½)	800-2 567 (600-2)				



HI-TACAN Z RWY 36L

SE-4, 20 MAR 2025 to 17 APR 2025

SE-4, 20 MAR 2025 to 17 APR 2025