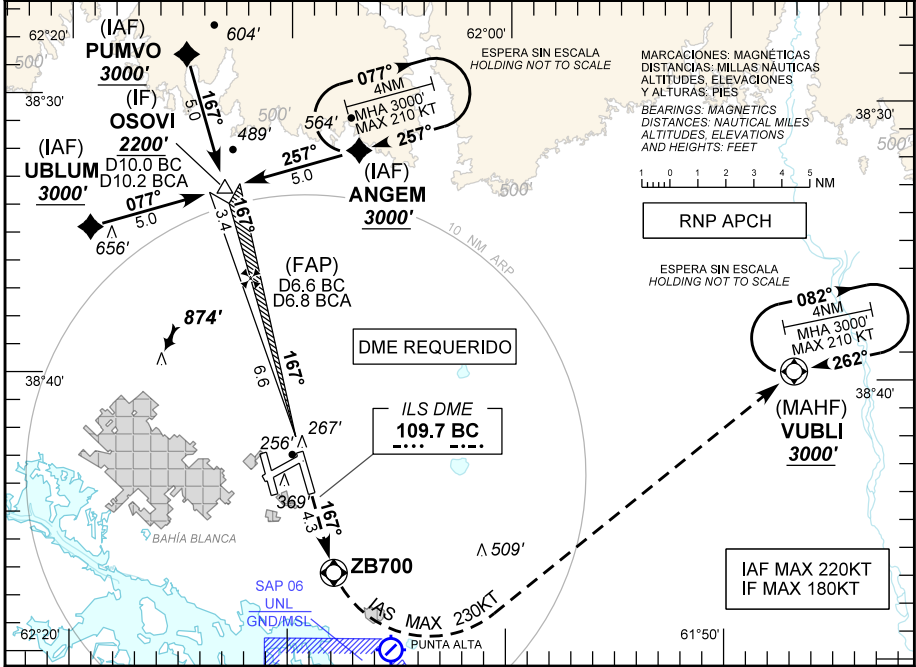
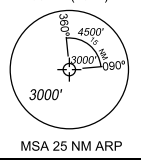


COMANDANTE ESPORA (SAZB) Carta de aproximación por instrumentos
BAHÍA BLANCA Instrument approach chart

ILS Z RWY 17L

BAHÍA CTL 124.80		BAHÍA APP 119.15 118.10		BAHÍA TWR 119.15 118.10		BAHÍA GND 121.90		EMERG 121.50	
LOC BC 109.7	FINAL APCH CRS 167°	ALTITUD MNM FAP 2200' (1952')		ILS DA(H) 448' (200')		AD Elev 248'		THR Elev 248'	
Aproximación frustrada: ASC con curso 167° hasta ZB700, luego viraje izquierda DCT VUBLI alcanzando MNM 3000 ft, HLDG y seguir instrucciones del ATC. Missed approach: Climb on track 167° to ZB700, then turn left DCT VUBLI reaching MNM 3000 ft, HLDG and proceed as directed by ATC.									
NOTA: Circulación visual solo al Este de RWY 17L/35R.					RMK: Circle to land only East of RWY 17L/35R.				



TA 3000'	IF OSOVI 2200'	FAP 2200'	DA 448'
1800'		RDH 54'	
TO THR 17L (NM) 10.0		6.6	0.5 0.0
TO BC (DME) 10.0		6.6	0.5 0.0
TO BCA (DME) 10.2		6.8	0.7 0.2

DIRECTA RWY 17L / Straight in RWY 17L								Circulación Visual				
ILS/DME								Circle to land				
CAT	DA 448'				DH 200'				CAT	MDA	MDH	VIS
A	VIS ALS				VIS SIN ALS				A	650'	402'	1900 M
B	800 M RVR 550 M				1200 M				B	740'	492'	2800 M
C									C	840'	592'	3700 M
D									D	940'	692'	4600 M
GS KT	90	110	130	150	160	DIST to THR17L	6.6	4	3	2	0.5	
FAP - THR17L	04:24	03:36	03:03	02:38	02:28	ALT	2200	1448	1162	875	448	
FPM	430	530	620	720	770	HGT	(1952)	(1200)	(914)	(627)	(200)	

31 ENERO 2019

PANS OPS Cambios: Nueva carta. Changes: New chart.

DISEÑO EAMA S.E. - NAVEGACION AEREA ARGENTINA DIRECCION REGULACION NORMAS Y PROCEDIMIENTOS - DNINA

COMANDANTE ESPORA (SAZB) ILS Z RWY 17L

FIX IDENT	COORDINATES
PUMVO	38°28'35.16" S 062°14'48.10" W
UBLUM	38°34'47.38" S 062°19'08.43" W
ANGEM	38°31'59.25" S 062°06'54.12" W
OSOVI	38°33'23.47" S 062°13'01.16" W
FAP	38°36'38.21" S 062°11'48.89" W
RW17L	38°43'00.01" S 062°09'26.56" W
ZB700	38°47'07.94" S 062°07'53.97" W
VUBLI	38°39'45.03" S 061°46'56.12" W

31 ENERO 2019

1/2 COMANDANTE ESPORA (SAZB) ILS Z RWY 17L

Seq Num	Fix Ident	Path Terminator	Fly Over	Distance (NM)	Course M°(T°)	Turn	Altitude (ft/FL)	Altitude Description	Speed Limit (Kt)	Navigation Specification	RNP	Dec (ARP 2017)
010	PUMVO	IF	N	N/A	N/A	N/A	3000	+	-220	RNP APCH	1.0	3 W
020	OSOVI	TF	N	5.0	167 (163.7)	N/A	2200	+	-180	RNP APCH	1.0	3 W
010	ANGEM	IF	N	N/A	N/A	N/A	3000	+	-220	RNP APCH	1.0	3 W
020	OSOVI	TF	N	5.0	257 (253.7)	N/A	2200	+	-180	RNP APCH	1.0	3 W
010	UBLUM	IF	N	N/A	N/A	N/A	3000	+	-220	RNP APCH	1.0	3 W
020	OSOVI	TF	N	5.0	077 (73.7)	N/A	2200	+	-180	RNP APCH	1.0	3 W
010	OSOVI	IF	N	N/A	N/A	N/A	2200	+	-180	RNP APCH	1.0	3 W

31 ENERO 2019

2/2 COMANDANTE ESPORA (SAZB) ILS Z RWY 17L

Seq Num	Fix Ident	Path Terminator	Fly Over	Distance (NM)	Course M°(T°)	Turn	Altitude (ft/FL)	Altitude Description	Speed Limit (Kt)	Navigation Specification	RNP	Dec (ARP 2017)
020	FAP	CF	N	3.4	167 (163.7)	N/A	2200	@	N/A	RNP APCH	1.0	3 W
030	RW17L	CF	Y	6.6	167 (163.7)	N/A	302	@	N/A	RNP APCH	0.3	3 W
040	ZB700	CF	Y	4.3	167 (163.7)	N/A	N/A	N/A	-230	RNP APCH	1.0	3 W
050	VUBLI	DF	Y	N/A	N/A	L	3000	+	-230	RNP APCH	1.0	3 W
060	VUBLI	HM	Y	4.0	262 (258.6)	L	3000	+	-210	RNP APCH	1.0	3 W

31 ENERO 2019

COMANDANTE ESPORA (SAZB) Carta de aproximación por instrumentos
BAHÍA BLANCA Instrument approach chart

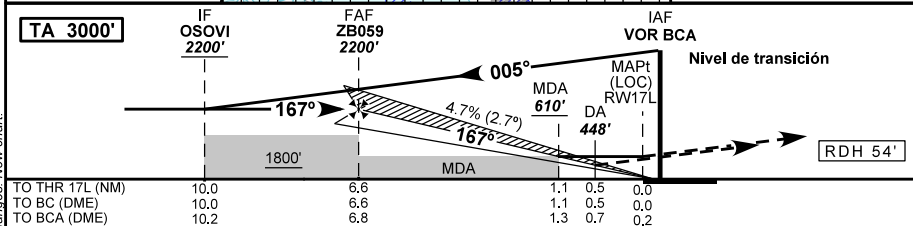
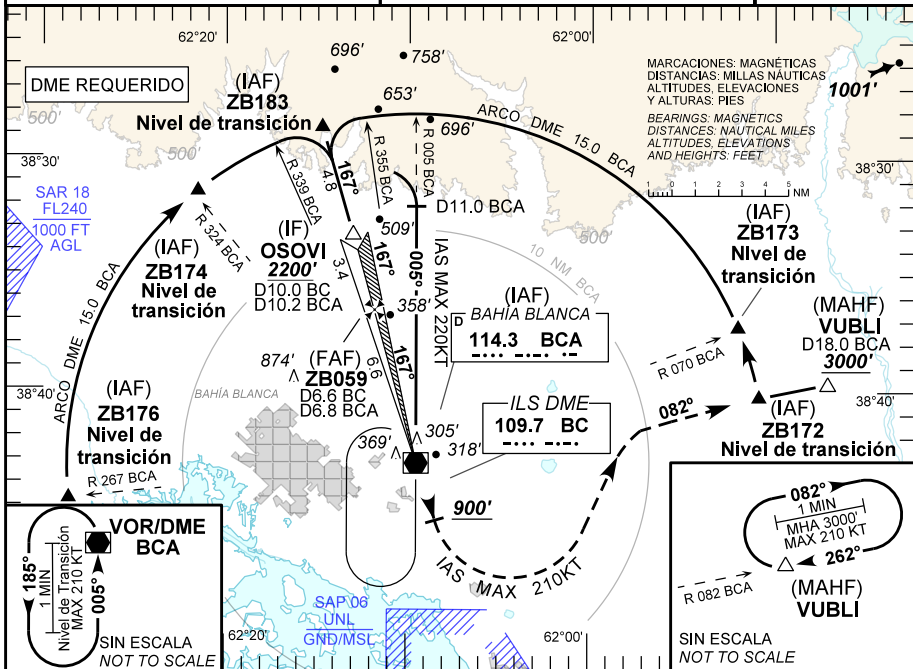
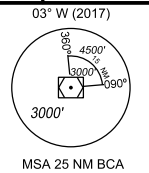
ILS Y RWY 17L

BAHIA CTL 124.80	BAHIA APP 119.15 118.10	BAHIA TWR 119.15 118.10	BAHIA GND 121.90	EMERG 121.50
----------------------------	-----------------------------------	-----------------------------------	----------------------------	------------------------

LOC BC 109.7	FINAL APCH CRS 167°	ALTITUD MNM ZB059 2200' (1952')	ILS DA(H) 448' (200')	AD Elev 248'	THR Elev 248'
------------------------	-------------------------------	---	---------------------------------	------------------------	-------------------------

Aproximación frustrada: ASC sobre rumbo de pista hasta 900 ft, luego viraje izquierda sobre R082 BCA hasta VUBLI, HLDG y seguir instrucciones del ATC.
 Missed approach: Climb on RWY heading until 900 ft, then turn left on course R082 BCA to VUBLI, HLDG and proceed as directed by ATC.

NOTA: Circulación visual solo al Este de RWY 17L/35R. RMK: Circle to land only East of RWY 17L/35R.



CAT	DIRECTA RWY 17L / Straight in RWY 17L				Circulación Visual			
	ILS/DME		LOC/DME		Circle to land			
	DA 448'	DH 200'	MDA 610'	MDH 362'	CAT	MDA	MDH	VIS
A	800 M RVR 550 M	1200 M	1200 M	1900 M	A	650'	402'	1900 M
B			1400 M	2100 M	B	740'	492'	2800 M
C					C	840'	592'	3700 M
D					D	940'	692'	4600 M

GS KT	90	110	130	150	160	DIST to MAPt	6.6	5	4	2	1.1
FAF - MAPt 6.6NM	4:24	3:36	3:03	2:38	2:28	ALT	2200	1735	1448	875	610
FPM	430	530	620	720	770	HGT	(1952)	(1487)	(1200)	(627)	(362)

31 ENERO 2019

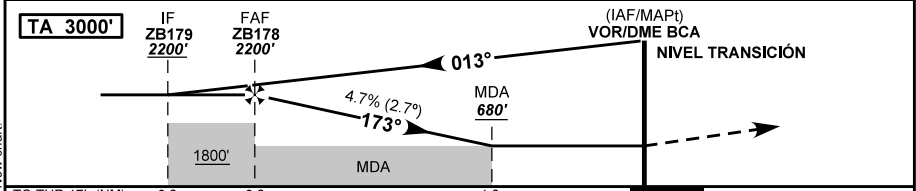
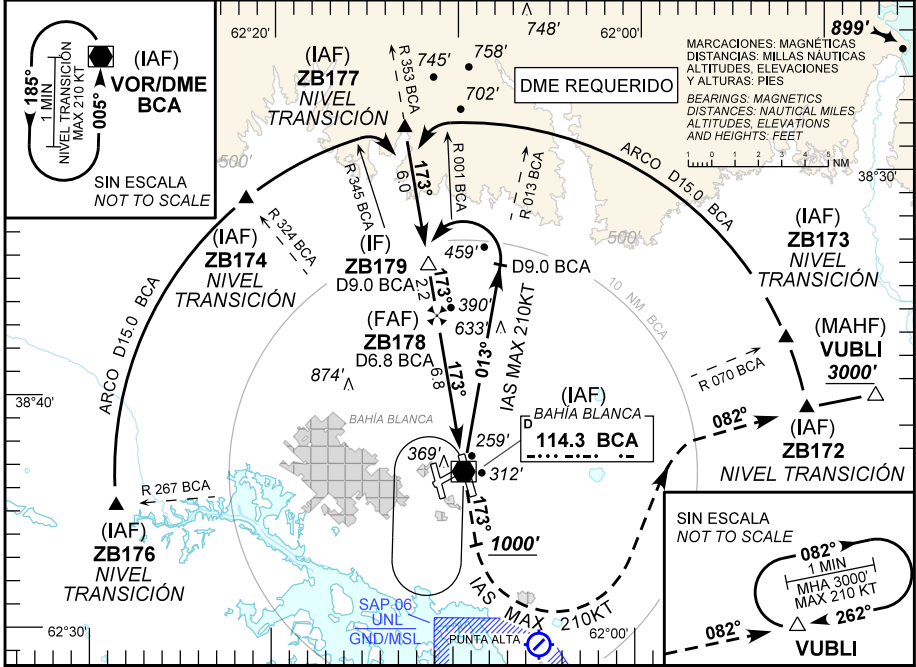
COMANDANTE ESPORA (SAZB)

Carta de aproximación por instrumentos
Instrument approach chart

BAHÍA BLANCA

VOR Z RWY 17L

BAHIA CTL 124.80		BAHIA APP 119.15 118.10		BAHIA TWR 119.15 118.10		BAHIA GND 121.90		EMERG 121.50	
VOR BCA 114.3	FINAL APCH CRS 173°	ALTITUD MNM ZB178 2200' (1952')		MDA (H) 680' (432')		AD Elev 248'		03° W (2017)	
						THR Elev 248'			
Aproximación frustrada: ASC sobre R 173 BCA hasta 1000 ft, luego viraje izquierda para interceptar R 082 BCA hasta VUBLI alcanzando MNM 3000 ft, HLDG y seguir instrucciones del ATC. Missed approach: Climb on R 173 BCA to 1000 ft, then turn left to intercept R 082 BCA until VUBLI reaching MNM 3000 ft, HLDG and proceed as directed by ATC.									
NOTA: Circulación visual solo al Este de RWY 17L/35R.					RMK: Circle to land only East of RWY 17L/35R.				



TO THR 17L (NM)	8.8	6.6	1.3	0.0
TO BCA (DME)	9.0	6.8	1.5	0.2

DIRECTA RWY 17L / Straight in RWY 17L						Circulación Visual				
CAT	VOR/DME					Circle to land				
	MDA 680'		MDH 432'			CAT	MDA	MDH	VIS	
A	1500 M		2200 M			A	680'	432'	2200 M	
B	1700 M		2400 M			B	740'	492'	2800 M	
C						C	840'	592'	3700 M	
D						D	940'	692'	4600 M	

GS KT	90	110	130	150	160	DIST to MAPT	6.8	4	3	2	1.5
FAF - MAPT 6.8 NM	4:24	3:36	3:03	2:38	2:28	ALT	2200	1391	1104	818	680
FPM	430	530	620	720	770	HGT	(1952)	(1143)	(856)	(570)	(432)

31 ENERO 2019

PANS OPS Cambios: Nueva carta. Changes: New chart.

DISEÑO EANA S.E. - NAVEGACION AEREA ARGENTINA DIRECCION REGULACION NORMAS Y PROCEDIMIENTOS - DNINA

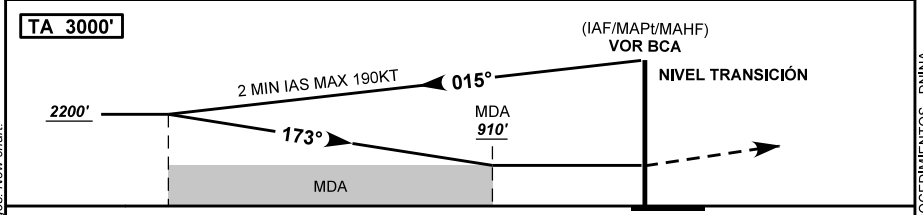
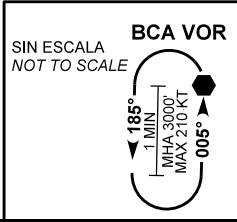
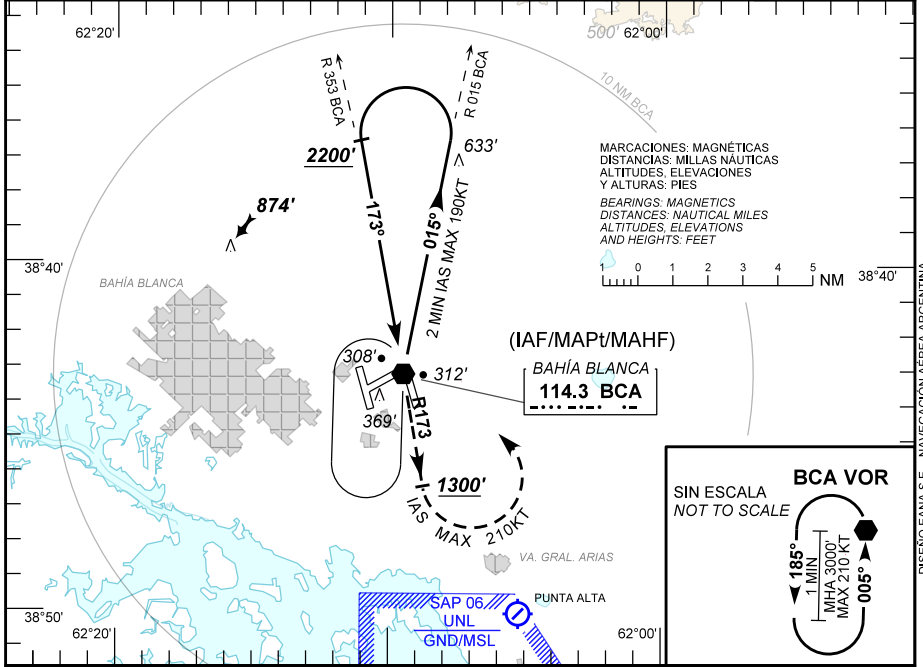
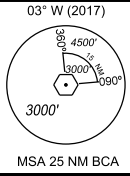
COMANDANTE ESPORA (SAZB) Carta de aproximación por instrumentos
BAHÍA BLANCA Instrument approach chart

VOR Y RWY 17L

BAHÍA CTL 124.80	BAHÍA APP 119.15 118.10	BAHÍA TWR 119.15 118.10	BAHÍA GND 121.90	EMERG 121.50
VOR BCA 114.3	FINAL APCH CRS 173°	SIN FAF NO FAF	MDA (H) 910' (662')	AD Elev 248' THR Elev 248'

Aproximación frustrada: ASC sobre R 173 BCA hasta 1300 ft, luego viraje izquierda DCT VOR BCA MNM 3000 ft, HLDG ascendiendo hasta FL040 y seguir instrucciones del ATC.
 Missed approach: Climb on R 173 BCA to 1300 ft, then turn left DCT BCA VOR MNM 3000 ft HLDG climbing to FL040 and proceed as directed by ATC.

NOTA: Circulación visual solo al Este de RWY 17L/35R. RMK: Circle to land only East of RWY 17L/35R.



DIRECTA RWY 17L / Straight in RWY 17L				Circulación Visual			
VOR				Circle to land			
CAT	MDA 910'		MDH 662'	CAT	MDA	MDH	VIS
A	2600 M		3300 M	A	910'	662'	3300 M
B	2800 M		3500 M	B	910'	662'	3700 M
C				C	940'	692'	4600 M
D				D			

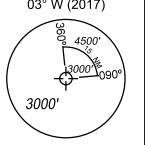
PANS OPS Cambios: Nueva carta. Changes: New chart.

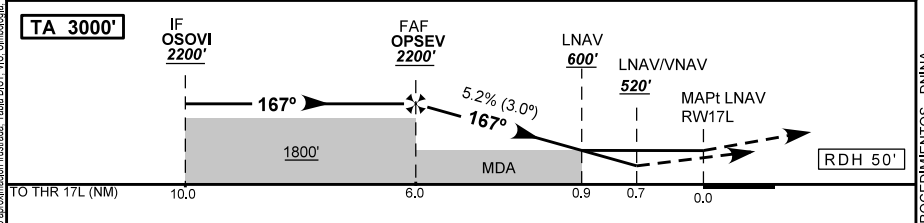
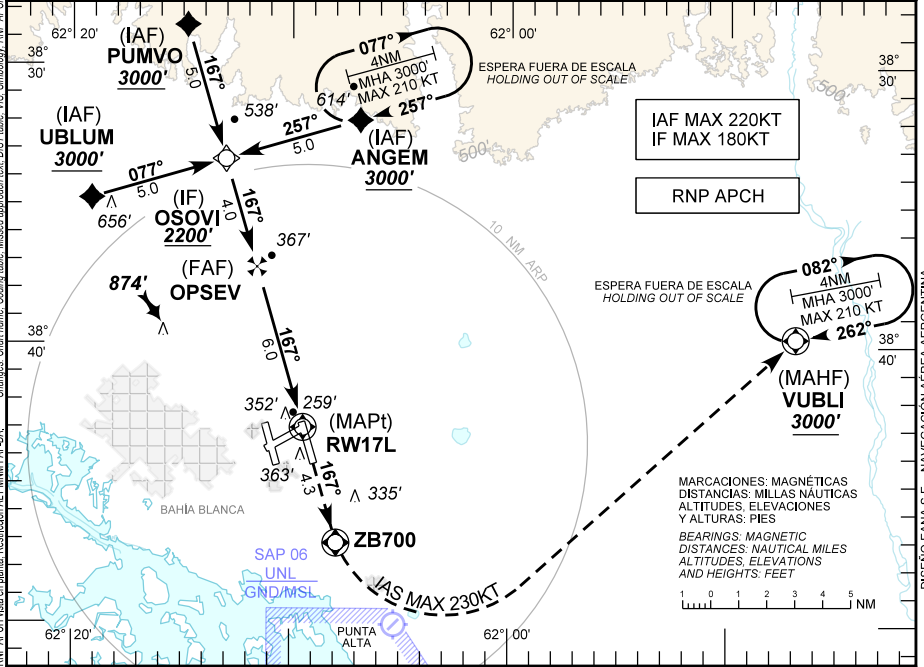
DISEÑO EANA S.E. - NAVEGACION AEREA ARGENTINA
 DIRECCION REGULACION NORMAS Y PROCEDIMIENTOS - DNINA

COMANDANTE ESPORA (SAZB)
BAHIA BLANCA

Carta de aproximación por instrumentos
Instrument approach chart

RNP RWY 17L

BAHIA CTL 124.80	BAHIA APP 119.15 118.10	BAHIA TWR 119.15 118.10	BAHIA GND 121.90	EMERG 121.50
RNP	FINAL APCH CRS 167°	ALTITUD MNM OPSEV 2200' (1952')	LNAV / VNAV DA(H) 520' (272')	AD Elev 248' THR Elev 248'
Aproximación frustrada: ASC con curso 167° hasta ZB700, virar a la izquierda DCT VUBLI alcanzando MNM 3000 ft, HLDG y seguir instrucciones del ATC. Missed approach: Climb on course 167° to ZB700, turn left DCT VUBLI reaching MNM 3000 ft, HLDG and proceed as directed by ATC.				03° W (2017)  MSA 25 NM ARP
NOTA: Para sistemas Baro VNAV no compensado, debajo de -10° C o superior a 48° C N.A.		NOTE: For uncompensated Baro VNAV systems N.A. below -10° C or above 48° C.		



DIRECTA RWY 17L / Straight in RWY 17L						Circulación Visual					
CAT	LNAV / VNAV		LNAV		MDA 600'	Circle to land					
	DA 520'	DH 272'	MDA 600'	MDH 352'		CAT	MDA	MDH	VIS		
A	800 M	1300 M	1100 M	1800 M	1300 M	A	3.0	2.0	0.9		
B						Circulación Visual N.A.					
C	RVR 600 M	RVR 1300 M	1300 M	2000 M						C	Circle to land N.A.
D						D					
GS KT	90	110	130	150	160	DIST to MAPt	6.0	4.0	3.0	2.0	0.9
FAF - MAPt 6.0 NM	4:00	3:16	2:46	2:24	2:15	ALT	2200	1570	1250	940	600
FPM	480	580	690	790	850	HGT	(1952)	(1322)	(1002)	(692)	(352)

21 ABRIL 2022

COMANDANTE ESPORA (SAZB) RNP RWY 17L

FIX IDENT	COORDINATES
PUMVO	38°28'35.16" S 062°14'48.10" W
UBLUM	38°34'47.38" S 062°19'08.43" W
ANGEM	38°31'59.25" S 062°06'54.12" W
OSOVI	38°33'23.47" S 062°13'01.16" W
OPSEV	38°37'15.63" S 062°11'34.87" W
RW17L	38°43'00.01" S 062°09'26.56" W
ZB700	38°47'07.94" S 062°07'53.97" W
VUBLI	38°39'45.03" S 061°46'56.12" W

21 ABRIL 2022

1/2 COMANDANTE ESPORA (SAZB) RNP RWY 17L											
Seq Num	Fix Ident	Path Terminator	Fly Over	Distance (NM)	Course M°(T°)	Turn	Altitude (ft/FL)	Speed Limit (Kt)	Navigation Specification	RNP	Dec (ARP 2017)
010	PUMVO	IF	N	N/A	N/A	N/A	+3000	-220	RNP APCH	1.0	3 W
020	OSOVI	TF	N	5.0	167 (163.7)	N/A	+2200	-180	RNP APCH	1.0	3 W
010	ANGEM	IF	N	N/A	N/A	N/A	+3000	-220	RNP APCH	1.0	3 W
020	OSOVI	TF	N	5.0	257 (253.7)	N/A	+2200	-180	RNP APCH	1.0	3 W
010	UBLUM	IF	N	N/A	N/A	N/A	+3000	-220	RNP APCH	1.0	3 W
020	OSOVI	TF	N	5.0	077 (73.7)	N/A	+2200	-180	RNP APCH	1.0	3 W
010	OSOVI	IF	N	N/A	N/A	N/A	+2200	-180	RNP APCH	1.0	3 W

21 ABRIL 2022

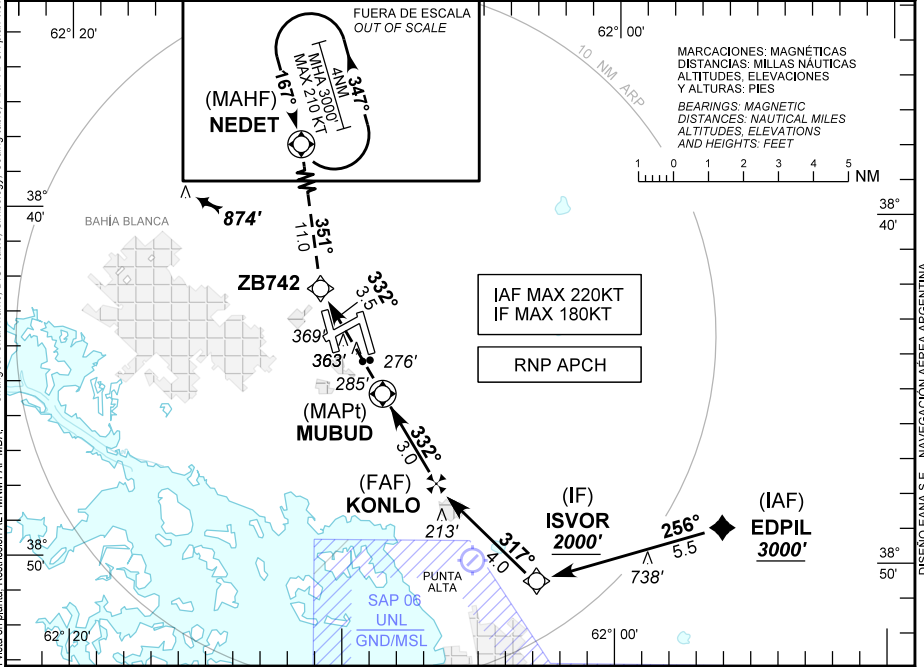
2/2 COMANDANTE ESPORA (SAZB) RNP RWY 17L											
Seq Num	Fix Ident	Path Terminator	Fly Over	Distance (NM)	Course M°(T°)	Turn	Altitude (ft/FL)	Speed Limit (Kt)	Navigation Specification	RNP	Dec (ARP 2017)
020	OPSEV	CF	N	4.0	167 (163.7)	N/A	+2200	N/A	RNP APCH	1.0	3 W
030	RW17L	CF	Y	6.0	167 (163.7)	N/A	@298	N/A	RNP APCH	0.3	3 W
040	ZB700	CF	Y	4.3	167 (163.7)	N/A	N/A	-230	RNP APCH	1.0	3 W
050	VUBLI	DF	Y	N/A	N/A	L	+3000	-230	RNP APCH	1.0	3 W
060	VUBLI	HM	Y	4.0	262 (258.6)	R	+3000	-210	RNP APCH	1.0	3 W

21 ABRIL 2022

COMANDANTE ESPORA (SAZB) Carta de aproximación por instrumentos
BAHÍA BLANCA Instrument approach chart

RNP RWY 35R (LNAV only)

BAHÍA CTL 124.80	BAHÍA APP 119.15 118.10	BAHÍA TWR 119.15 118.10	BAHÍA GND 121.90	EMERG 121.50
RNP	FINAL APCH CRS 332°	ALTITUD MNM KONLO 1580' (1362')	LNAV MDA(H) 650' (432')	AD Elev 248' THR Elev 218'
Aproximación frustrada: ASC sobre curso 332° hasta ZB742. Luego seguir sobre curso 351° hasta NEDET alcanzando MNM 3000 ft, HLDG y seguir instrucciones del ATC. Missed approach: Climb on track 332° to ZB742, then continue on track 351° to NEDET reaching MNM 3000 ft, HLDG and proceed as directed by ATC.				03° W (2017)
NOTA: Aproximación final desplazada 15° respecto a eje de RWY debido a SAP 06.		NOTE: Final approach offset 15° from RWY center line due to SAP 06.		



CAT	DIRECTA RWY 35R / Straight in RWY 35R				Circulación Visual						
	LNAV 3.0% *		LNAV 2.5% *		Circle to land						
	MDA 650'	MDH 432'	MDA 980'	MDH 762'	CAT	MDA	MDH	VIS			
A	2200 M		3800 M		A	Circulación Visual N.A. Circle to land N.A.					
B	2400 M		4000 M		B						
C					C						
D					D						
GS KT	90	110	130	150	160	DIST to MAPt	3.0	2.0	1.5	1.0	0.0
FAF - MAPt 3.0 NM	2:00	1:38	1:23	1:12	1:07	ALT	1580	1290	1130	970	650
FPM	470	570	670	780	830	HGT	(1362)	(1072)	(912)	(752)	(432)

21 ABRIL 2022

COMANDANTE ESPORA (SAZB) RNP RWY 35R (LNAV only)

FIX IDENT	COORDINATES
EDPIL	38°49'02.74" S 061°56'05.90" W
ISVOR	38°50'37.66" S 062°02'53.30" W
KONLO	38°47'51.82" S 062°06'35.47" W
MUBUD	38°45'17.88" S 062°08'35.09" W
ZB742	38°42'17.71" S 062°10'53.32" W
NEDET	38°31'28.15" S 062°13'43.96" W

21 ABRIL 2022

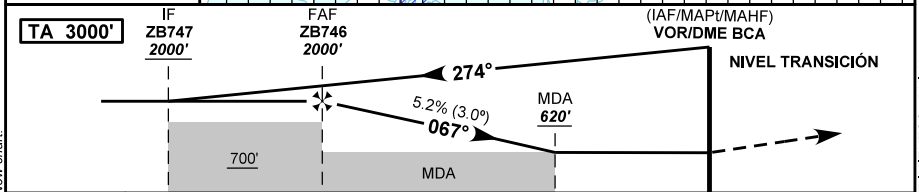
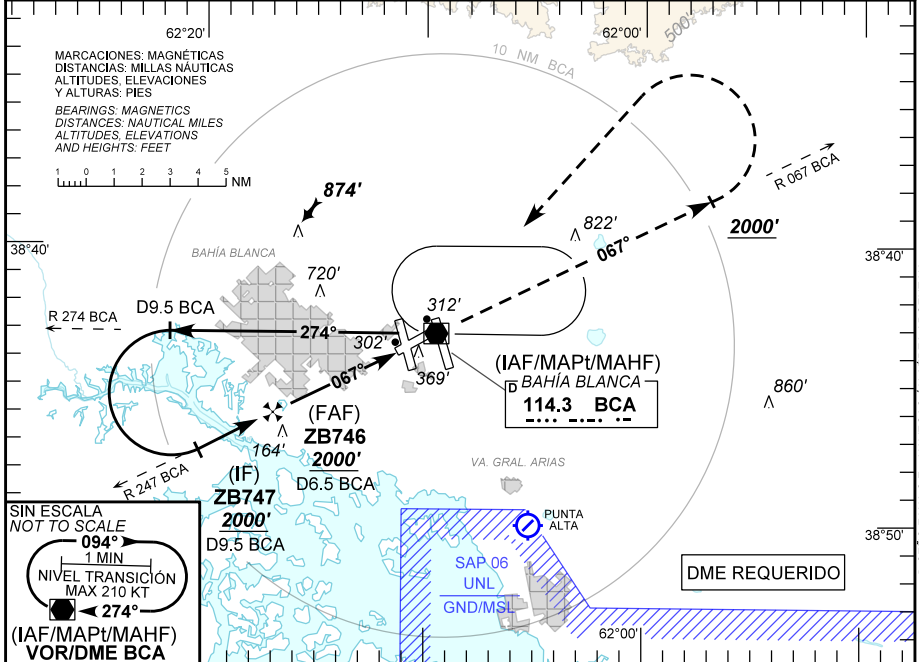
1/1 COMANDANTE ESPORA (SAZB) RNP RWY 35R (LNAV only)											
Seq Num	Fix Ident	Path Terminator	Fly Over	Distance (NM)	Course M°(T°)	Turn	Altitude (ft/FL)	Speed Limit (Kt)	Navigation Specification	RNP	Dec (ARP 2017)
010	EDPIL	IF	N	N/A	N/A	N/A	+3000	-220	RNP APCH	1.0	3 W
020	ISVOR	TF	N	5.5	256 (253.4)	N/A	+2000	-180	RNP APCH	1.0	3 W
030	KONLO	TF	N	4.0	317 (313.7)	N/A	+1580	N/A	RNP APCH	1.0	3 W
040	MUBUD	TF	Y	3.0	332 (328.7)	N/A	@650	N/A	RNP APCH	0.3	3 W
050	ZB742	CF	N	3.5	332 (329.0)	N/A	N/A	N/A	RNP APCH	1.0	3 W
060	NEDET	TF	Y	11.0	351 (348.4)	N/A	+3000	N/A	RNP APCH	1.0	3 W
070	NEDET	HM	Y	4.0	167 (163.9)	L	+3000	-210	RNP APCH	1.0	3 W

21 ABRIL 2022

COMANDANTE ESPORA (SAZB) Carta de aproximación por instrumentos
BAHÍA BLANCA Instrument approach chart

VOR Z RWY 06

BAHÍA CTL 124.80		BAHÍA APP 119.15 118.10		BAHÍA TWR 119.15 118.10		BAHÍA GND 121.90		EMERG 121.50	
VOR BCA 114.3	FINAL APCH CRS 067°	ALTITUD MNM FAF 2000' (1752')		MDA (H) 620' (372')		AD Elev 248'		03° W (2017)	
						THR Elev 244'			
Aproximación frustrada: ASC sobre R 067 BCA hasta 2000 ft, luego viraje izquierda DCT VOR BCA alcanzando MNM FL040, HLDG y seguir instrucciones del ATC. Missed approach: Climb on R 067 BCA to 2000 ft, then turn left DCT BCA VOR reaching MNM FL040, HLDG and proceed as directed by ATC.									
NOTA: NIL.					RMK: NIL.				



DIRECTA RWY 06 / Straight in RWY 06											
CAT	VOR/DME					Circulación Visual					
	MDA 620'					Circle to land					
VIS					MDH 372'						
A	1900 M					A	Circulación Visual N.A.				
B	2100 M					B	Circle to land N.A.				
C						C					
D						D					
GS KT	90	110	130	150	160	DIST to MAPt	6.5	5	4	3	2.1
FAF - MAPt 6.5 NM	4:20	3:33	3:00	2:36	2:26	ALT	2000	1529	1211	892	620
FPM	390	480	570	650	700	HGT	(1752)	(1281)	(963)	(644)	(372)

31 ENERO 2019

PANS OPS Cambios: Nueva carta. Changes: New chart.

DISEÑO EANA S.E. - NAVEGACIÓN AEREA ARGENTINA DIRECCIÓN REGULACIÓN NORMAS Y PROCEDIMIENTOS - DNINA

COMANDANTE ESPORA (SAZB)

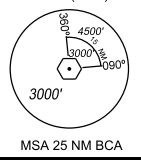
Carta de aproximación por instrumentos
Instrument approach chart

VOR Y RWY 06

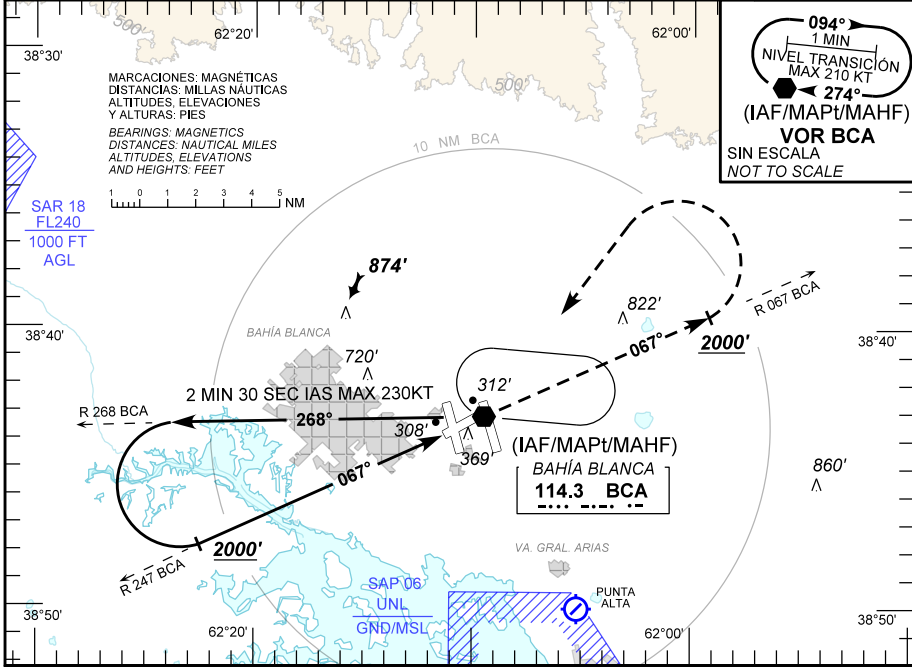
BAHIA CTL 124.80	BAHIA APP 119.15 118.10	BAHIA TWR 119.15 118.10	BAHIA GND 121.90	EMERG 121.50
----------------------------	-----------------------------------	-----------------------------------	----------------------------	------------------------

VOR BCA 114.3	FINAL APCH CRS 067°	SIN FAF NO FAF	MDA (H) 670' (422')	AD Elev 248' THR Elev 244'	03° W (2017)
-------------------------	-------------------------------	--------------------------	-------------------------------	---	--------------

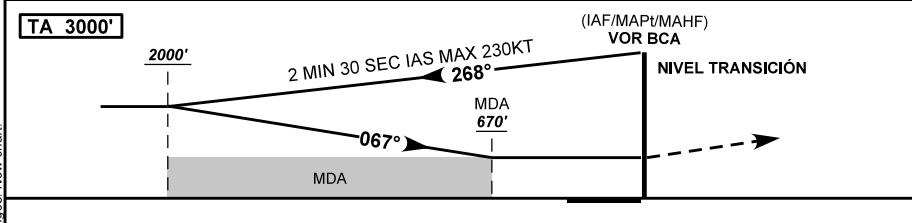
Aproximación frustrada: ASC sobre R 067 BCA hasta 2000 ft. Luego viraje izquierda DCT VOR BCA alcanzando MNM FL040, HLDG y seguir instrucciones del ATC.
Missed approach: Climb on R 067 BCA to 2000 ft, then turn left DCT BCA VOR reaching MNM FL040 ft, HLDG and proceed as directed by ATC.



NOTA: NIL. RMK: NIL.



094°
1 MIN
NIVEL TRANSICIÓN
MAX 210 KT
274°
(IAF/MAPt/MAHF)
VOR BCA
SIN ESCALA
NOT TO SCALE



DIRECTA RWY 06 / Straight in RWY 06				Circulación Visual			
CAT	VOR			Circle to land			
	MDA 670'			MDH 422'			
	VIS			CAT	MDA	MDH	VIS
A	2200 M			A	Circulación Visual N.A. Circle to land N.A.		
B	2400 M			B			
C				C			
D				D			

PANS OPS Cambios: Nueva carta. Changes: New chart.

DISEÑO EAMA S.E. - NAVEGACIÓN AEREA ARGENTINA DIRECCION REGULACION NORMAS Y PROCEDIMIENTOS - DNINA

COMANDANTE ESPORA (SAZB) Carta de aproximación por instrumentos
BAHÍA BLANCA Instrument approach chart

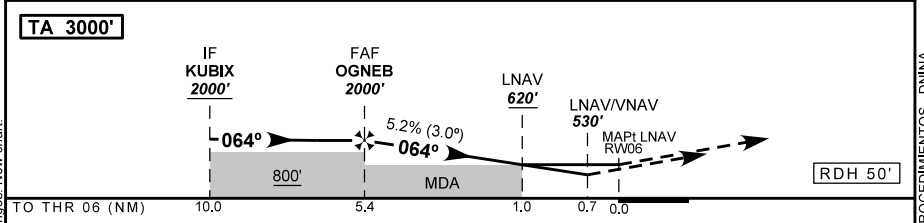
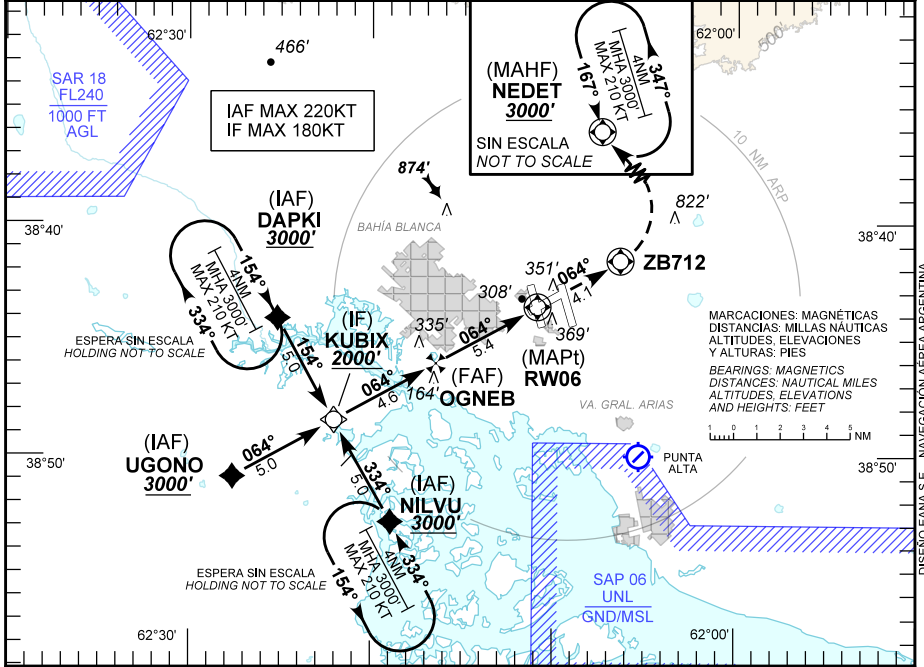
RNP RWY 06 (LNAV/VNAV)

BAHÍA CTL 124.80	BAHÍA APP 119.15 118.10	BAHÍA TWR 119.15 118.10	BAHÍA GND 121.90	EMERG 121.50
RNP	FINAL APCH CRS 064°	ALTITUD MNM OGNEB 2000' (1756')	LNAV / VNAV DA(H) 530' (286')	AD Elev 248' THR Elev 244'

Aproximación frustrada: ASC sobre curso 064° hasta ZB712, luego viraje izquierda DCT NEDET, alcanzando MNM 3000 ft, HLDG y seguir instrucciones del ATC.
 Missed approach: Climb on track 064° to ZB712, then turn left DCT NEDET reaching MNM 3000 ft, HLDG and proceed as directed by ATC.

NOTA: Para sistemas Baro VNAV no compensado, debajo de -10° C o superior a 48° C N.A.
 RMK: For uncompensated Baro VNAV system N.A. below -10° C or above 48° C.

03° W (2017)
MSA 25 NM ARP



DIRECTA RWY 06 / Straight in RWY 06								Circulación Visual N.A.				
CAT	LNAV / VNAV				LNAV				Circle to land N.A.			
	DA 530'	DH 286'		MDA 620'	MDH 372'		Requiere certificación RNP APCH (LNAV) APV / Baro VNAV (LNAV - VNAV)					
A	VIS				VIS				Certification required RNP APCH (LNAV)			
B	1400 M				1900 M				APV / Baro VNAV (LNAV - VNAV)			
C					2100 M							
D												
GS KT	90	110	130	150	160	DIST to MAPt	5.4	4	3	2	1.0	
FAF - MAPt 5.4 NM	3:36	2:57	2:30	2:10	2:02	ALT	2000	1568	1249	931	620	
FPM	470	580	680	790	840	HGT	(1756)	(1324)	(1005)	(687)	(372)	

31 ENERO 2019

COMANDANTE ESPORA (SAZB) RNP RWY 06 (LNAV/VNAV)

FIX IDENT	COORDINATES
DAPKI	38°44'09.81" S 62°25'06.42" W
NILVU	38°52'54.32" S 62°18'52.50" W
UGONO	38°50'58.26" S 62°27'35.02" W
KUBIX	38°48'32.11" S 62°21'59.65" W
OGNEB	38°46'16.19" S 62°16'48.65" W
RW06	38°43'39.00" S 62°10'50.06" W
ZB712	38°41'39.42" S 62°06'18.01" W
NEDET	38°31'28.15" S 62°13'43.96" W

31 ENERO 2019

1/2 COMANDANTE ESPORA (SAZB) RNP RWY 06 (LNAV/VNAV)

Seq Num	Fix Ident	Path Terminator	Fly Over	Distance (NM)	Course M°(T°)	Turn	Altitude (ft/FL)	Altitude Description	Speed Limit (Kt)	Navigation Specification	RNP	Dec (ARP 2017)
010	DAPKI	IF	N	N/A	N/A	N/A	3000	+	-220	RNP APCH	1.0	3 W
020	KUBIX	TF	N	5.0	154 (150.8)	N/A	2000	+	-180	RNP APCH	1.0	3 W
010	NILVU	IF	N	N/A	N/A	N/A	3000	+	-220	RNP APCH	1.0	3 W
020	KUBIX	TF	N	5.0	334 (330.8)	N/A	2000	+	-180	RNP APCH	1.0	3 W
010	UGONO	IF	N	N/A	N/A	N/A	3000	+	-220	RNP APCH	1.0	3 W
020	KUBIX	TF	N	5.0	064 (060.8)	N/A	2000	+	-180	RNP APCH	1.0	3 W
010	KUBIX	IF	N	N/A	N/A	N/A	2000	+	-180	RNP APCH	1.0	3 W
020	OGNEB	TF	N	4.6	064 (060.8)	N/A	2000	+	N/A	RNP APCH	1.0	3 W

31 ENERO 2019


2/2 COMANDANTE ESPORA (SAZB) RNP RWY 06 (LNAV/VNAV)

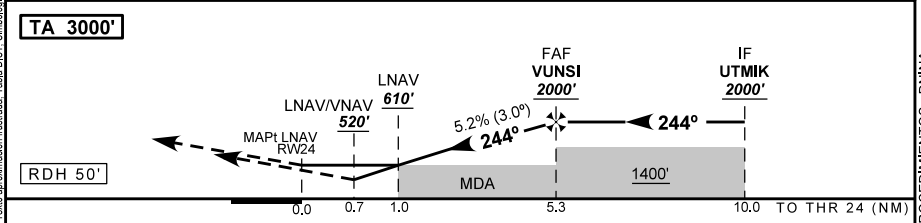
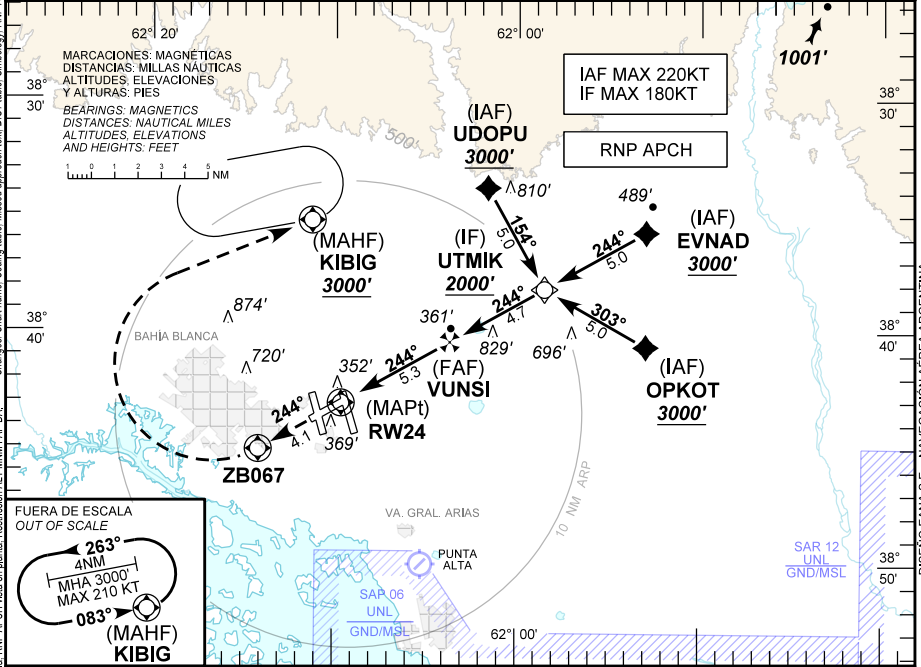
Seq Num	Fix Ident	Path Terminator	Fly Over	Distance (NM)	Course M°(T°)	Turn	Altitude (ft/FL)	Altitude Description	Speed Limit (Kt)	Navigation Specification	RNP	Dec (ARP 2017)
030	RW06	TF	Y	5.4	064 (060.7)	N/A	294	@	N/A	RNP APCH	0.3	3 W
040	ZB172	CF	Y	4.1	064 (060.7)	N/A	N/A	N/A	N/A	RNP APCH	1.0	3 W
050	NEDET	DF	Y	N/A	N/A	L	3000	+	N/A	RNP APCH	1.0	3 W
060	NEDET	HM	Y	4.0	167 (163.9)	L	3000	+	-210	RNP APCH	1.0	3 W

31 ENERO 2019

COMANDANTE ESPORA (SAZB) Carta de aproximación por instrumentos
BAHÍA BLANCA Instrument approach chart

RNP RWY 24

BAHÍA CTL 124.80		BAHÍA APP 119.15 118.10		BAHÍA TWR 119.15 118.10		BAHÍA GND 121.90		EMERG 121.50	
RNP	FINAL APCH CRS 244°	ALTITUD MNM VUNSI 2000' (1752')	LNAV / VNAV DA(H) 520' (272')		AD Elev 248'		THR Elev 248'		03° W (2017)  MSA 25 NM ARP
Aproximación frustrada: ASC sobre curso 244° hasta ZB067, virar a la derecha DCT KIBIG alcanzando MNM 3000 ft, HLDG y seguir instrucciones del ATC. Missed approach: Climb on course 244° to ZB067, turn right DCT KIBIG reaching MNM 3000 ft, HLDG and proceed as directed by ATC.									
NOTA: Para sistemas Baro VNAV no compensado, debajo de -10° C o superior a 48° C N.A.					NOTE: For uncompensated Baro VNAV systems N.A. below -10° C or above 48° C.				



DIRECTA RWY24 / Straight in RWY 24												
CAT	LNAV / VNAV				LNAV				Circulación Visual Circle to land			
	DA 520'	DH 272'	MDA 610'	MDH 362'	VIS							
A	1300 M				1900 M				A	Circulación Visual N.A. Circle to land N.A.		
B												
C												
D												
GS KT	90	110	130	150	160	DIST to MAPt	5.3	4.0	3.0	2.0	1.0	
FAF - MAPt 5.3 NM	3:34	2:55	2:28	2:08	2:00	ALT	2000	1570	1250	940	610	
FPM	480	580	690	800	850	HGT	(1752)	(1322)	(1002)	(692)	(362)	

21 ABRIL 2022

COMANDANTE ESPORA (SAZB) RNP RWY 24

FIX IDENT	COORDINATES
EVNAD	38°35'45.76" S 061°52'57.25" W
OPKOT	38°40'40.64" S 061°52'56.92" W
UDOPU	38°33'51.62" S 062°01'38.38" W
UTMIK	38°38'13.30" S 061°58'30.64" W
VUNSI	38°40'30.39" S 062°03'41.27" W
RW24	38°43'07.59" S 062°09'38.54" W
ZB067	38°45'07.04" S 062°14'10.78" W
KIBIG	38°35'16.42" S 062°11'15.68" W

21 ABRIL 2022

1/2 COMANDANTE ESPORA (SAZB) RNP RWY 24											
Seq Num	Fix Ident	Path Terminator	Fly Over	Distance (NM)	Course M°(T°)	Turn	Altitude (ft/FL)	Speed Limit (Kt)	Navigation Specification	RNP	Dec (ARP 2017)
010	OPKOT	IF	N	N/A	N/A	N/A	+3000	-220	RNP APCH	1.0	3 W
020	UTMIK	TF	N	5.0	303 (299.4)	N/A	+2000	-180	RNP APCH	1.0	3 W
010	UDOPU	IF	N	N/A	N/A	N/A	+3000	-220	RNP APCH	1.0	3 W
020	UTMIK	TF	N	5.0	154 (150.6)	N/A	+2000	-180	RNP APCH	1.0	3 W
010	EVNAD	IF	N	N/A	N/A	N/A	+3000	-220	RNP APCH	1.0	3 W
020	UTMIK	TF	N	5.0	244 (240.6)	N/A	+2000	-180	RNP APCH	1.0	3 W
010	UTMIK	IF	N	N/A	N/A	N/A	+2000	-180	RNP APCH	1.0	3 W
020	VUNSI	TF	N	4.7	244 (240.7)	N/A	+2000	N/A	RNP APCH	1.0	3 W

21 ABRIL 2022

2/2 COMANDANTE ESPORA (SAZB) RNP RWY 24											
Seq Num	Fix Ident	Path Terminator	Fly Over	Distance (NM)	Course M°(T°)	Turn	Altitude (ft/FL)	Speed Limit (Kt)	Navigation Specification	RNP	Dec (ARP 2017)
030	RW24	TF	Y	5.3	244 (240.7)	N/A	@298	N/A	RNP APCH	0.3	3 W
040	ZB067	CF	Y	4.1	244 (240.8)	N/A	N/A	N/A	RNP APCH	1.0	3 W
050	KIBIG	DF	N	N/A	N/A	R	+3000	N/A	RNP APCH	1.0	3 W
060	KIBIG	HM	Y	4.0	083 (080.1)	L	+3000	-210	RNP APCH	1.0	3 W

21 ABRIL 2022