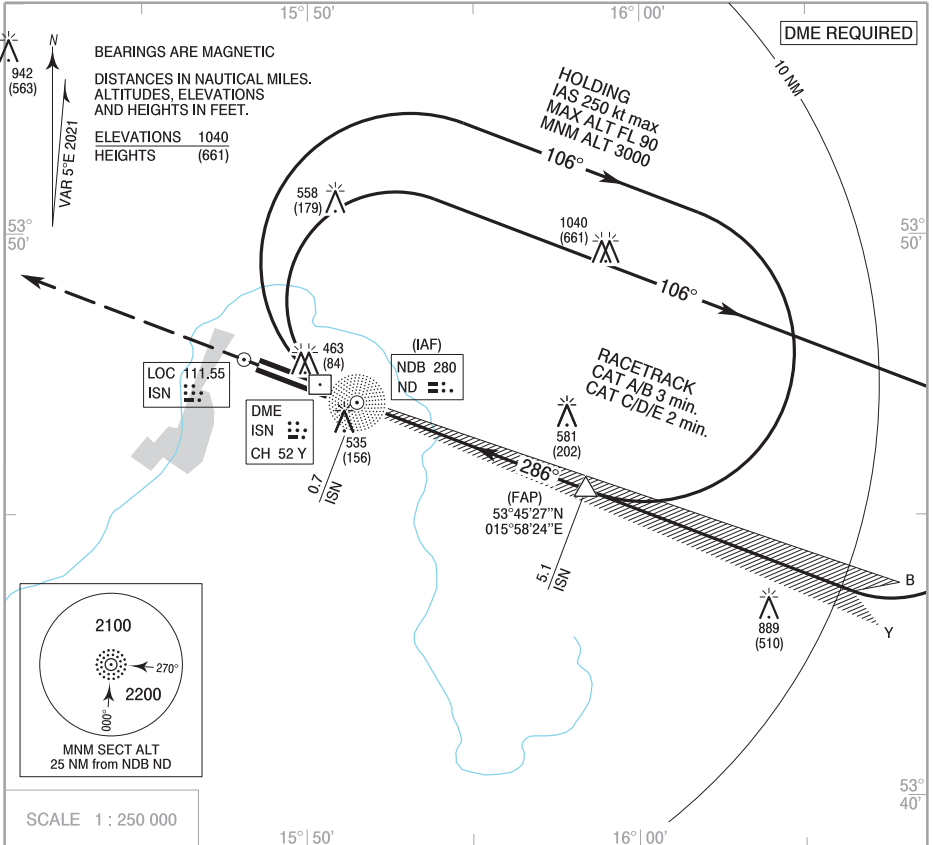


**INSTRUMENT  
APPROACH  
CHART - ICAO**

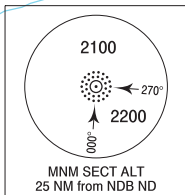
AERODROME ELEV 394 ft  
THR RWY 29 ELEV 379 ft  
HEIGHTS RELATED TO THR RWY 29

Swidwin APPROACH 125.175, 278.975  
Swidwin TOWER 127.500, 233.975  
ATIS 138.850

**SWIDWIN  
ILS or LOC  
RWY 29 (CAT A/B/C/D/E)**



Correction: Circling OCA (OCH) changed.

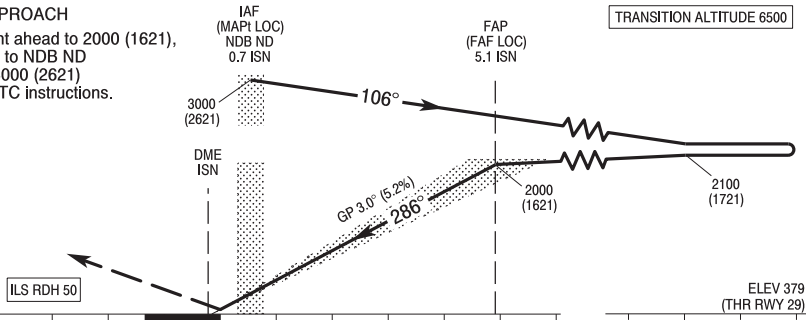


SCALE 1 : 250 000

**MISSED APPROACH**

Climb straight ahead to 2000 (1621),  
then turn left to NDB ND  
climbing to 3000 (2621)  
and follow ATC instructions.

TRANSITION ALTITUDE 6500



Cat. of ACFT	OCA (OCH)					Distance FAF - MAPt 4.4 NM								
	A	B	C	D	E	Speed kt	70	100	135	170	200	230		
Straight-in	Cat. I	589 (210)	599 (220)	609 (230)	619 (240)	639 (260)	Time	min : s	3 : 45	2 : 40	2 : 00	1 : 35	1 : 20	1 : 10
	LOC	799 (420)	799 (420)	799 (420)	799 (420)	799 (420)	Rate of descent	ft / min	370	530	710	890	1050	1210
Circling (OCH AAL)	844 (450)	894 (500)	1014 (620)	1434 (1040)	1544 (1150)	Dist. to ISN	5.1	5.0	4.0	3.0	2.0	1.0	0.7	
						Altitude	2000	1970	1655	1340	1225	910	799	

**INSTRUMENT  
APPROACH  
CHART - ICAO**

**ŚWIDWIN**  
ILS or LOC  
RWY 29 (CAT A/B/C/D/E)

FIX / POINT	LATITUDE	LONGITUDE	FIX FORMATION	
IAF NDB ND	53°47'00.3"N	015°51'29.8"E		
FAP (FAF LOC)	53°45'26.9"N	015°58'24.1"E	290.93° GEO (286° MAG) LOC ISN	5.10 NM DME ISN
MAPt (LOC)	53°47'00.3"N	015°51'29.8"E	290.82° GEO (286° MAG) LOC INS	0.73 NM DME ISN
Final approach descent angle: 3.00°				