

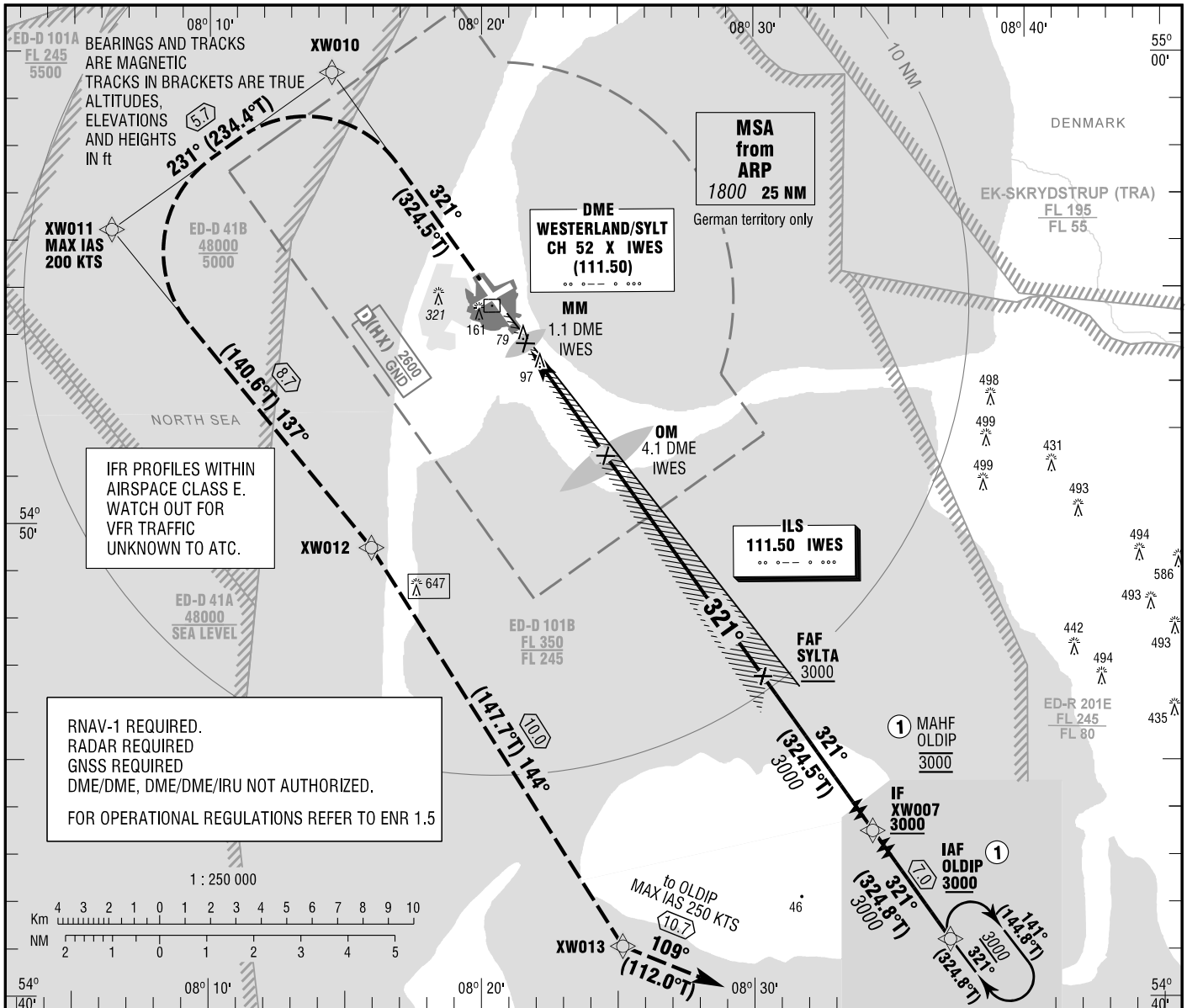
**INSTRUMENT
APPROACH
CHART - ICAO**

VAR 3° E

ELEV 52
OCH RELATED TO
THR 32 ELEV 31

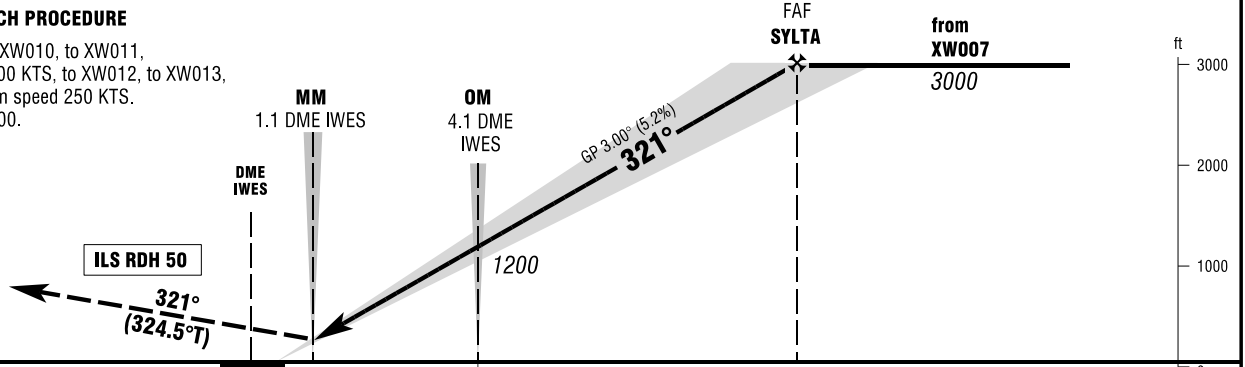
SYLT ATIS 118.400
BREMEN RADAR 124.075
SYLT TOWER 119.750

SYLT
ILS
RWY 32



MISSED APPROACH PROCEDURE

On course 321° to XW010, to XW011, maximum speed 200 KTS, to XW012, to XW013, to OLDIP, maximum speed 250 KTS. Cross OLDIP at 3000.



NM 6 5 4 3 2 1 0 1 2 3 4 5 6 7 8 9 10 11 12 13 14 NM PROFILE SCALE 1 : 250 000

OCA (OCH)	A	B	C	D
ILS CAT I	211 (180)	222 (191)	230 (199)	240 (209)
CIRCLING* OCH RELATED TO AD ELEV	620 (570)	650 (590)	750 (700)	750** (700)

DME IWES	2	3	4	5	6	7	8	9
DIST THR	1.4	2.4	3.4	4.4	5.4	6.4	7.4	8.4
ALTITUDE	540	860	1180	1500	1810	2130	2450	2770

GS	kt	80	100	120	140	160	180
SYLTA - THR (9.2 NM)	MIN:SEC	6:52	5:30	4:35	3:56	3:26	3:03
Rate of descent (5.2%)	ft / MIN	420	530	640	740	850	960

*CIRCLING E OF AERODROME ONLY. CIRCLING FOR RWY 06 NOT PERMITTED. **CIRCLING RWY 24 FOR CAT D AIRCRAFT NOT PERMITTED.

Correction: MSA revised.