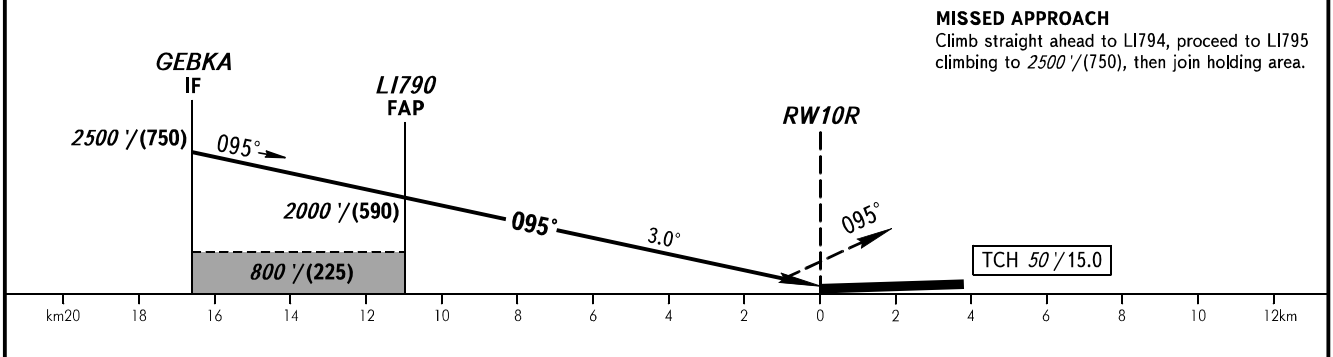
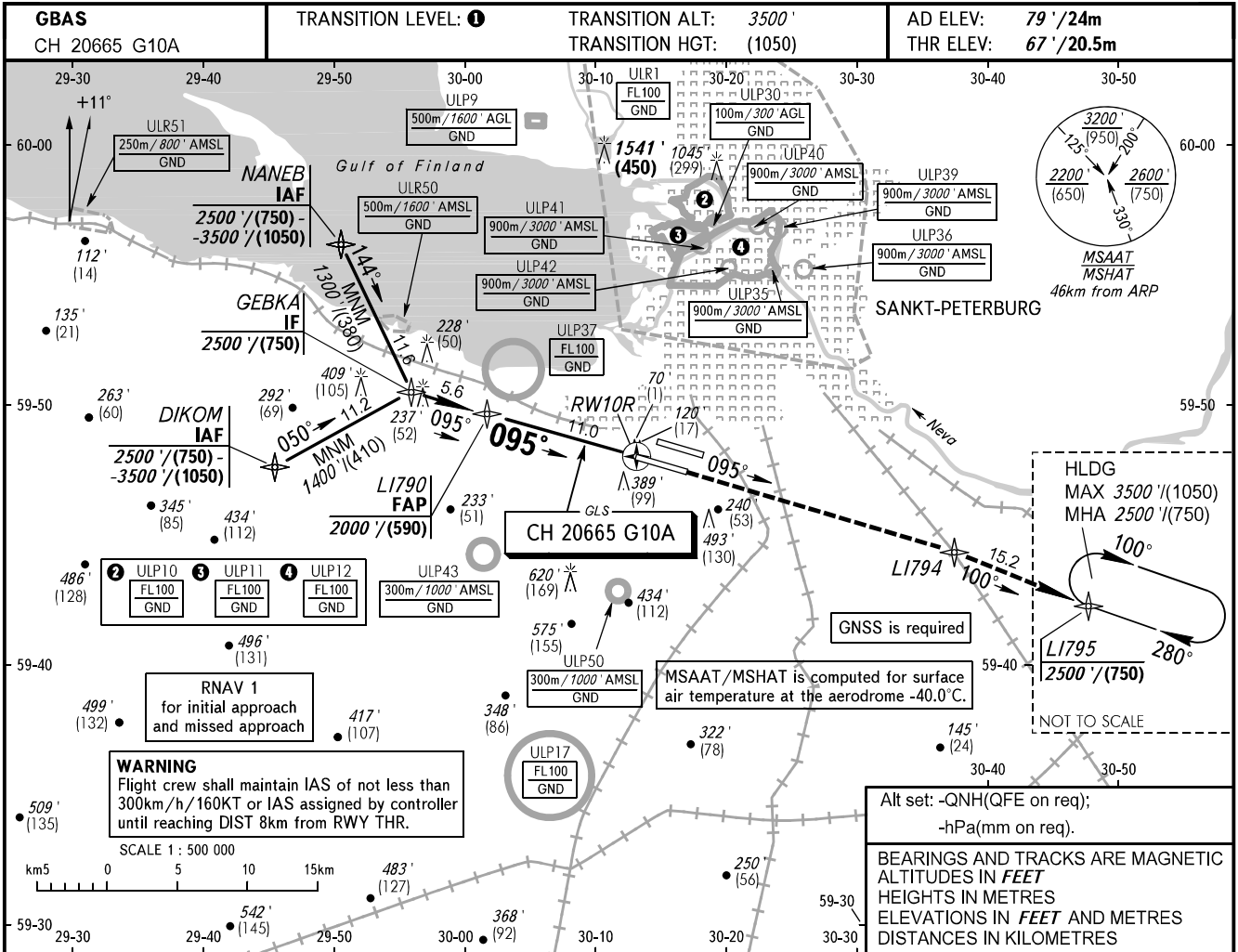


**INSTRUMENT  
APPROACH  
CHART - ICAO**

RADAR **120.300**  
TOWER **118.700**

**SANKT-PETERBURG, RUSSIA**  
PULKOVO  
GLS RWY 10R



OCA(H)		A	B	C	D	DL
Straight-in	<b>CAT I</b>	206' (139') (43)	214' (147') (45)	226' (159') (49)	238' (171') (53)	242' (175') (54)
	Approach					
Circling		690' (610') (190)	790' (710') (220)	890' (810') (250)	1020' (940') (290)	N/A

**1** TRANSITION LEVEL:  
- FL050 when QNH is 996 hPa (747mm mercury column) or above;  
- FL060 when QNH is 960 hPa (720mm mercury column) or above, but less than 996 hPa (747mm mercury column);  
- FL070 when QNH is less than 960 hPa (720mm mercury column).

**WARNING**  
Visual manoeuvring to the north of the AD is PROHIBITED.

**NOTE**  
Level flight segment is not AVBL before FAP.

GROUND SPEED	km/h	150	180	210	240	270	300	330	360	390
	kt	80	100	110	130	145	160	180	195	210
RATE OF DESCENT	m/s	2.2	2.6	3.1	3.5	3.9	4.4	4.8	5.2	5.7
	ft / min	430	516	602	688	774	860	946	1032	1118

CHANGE: WARNING