

KNOB NOSTER, MISSOURI

RNAV (GPS) RWY 19

APCH CRS	Rwy Idg	12,400
190°	TDZE	871
	Arprt Elev	871

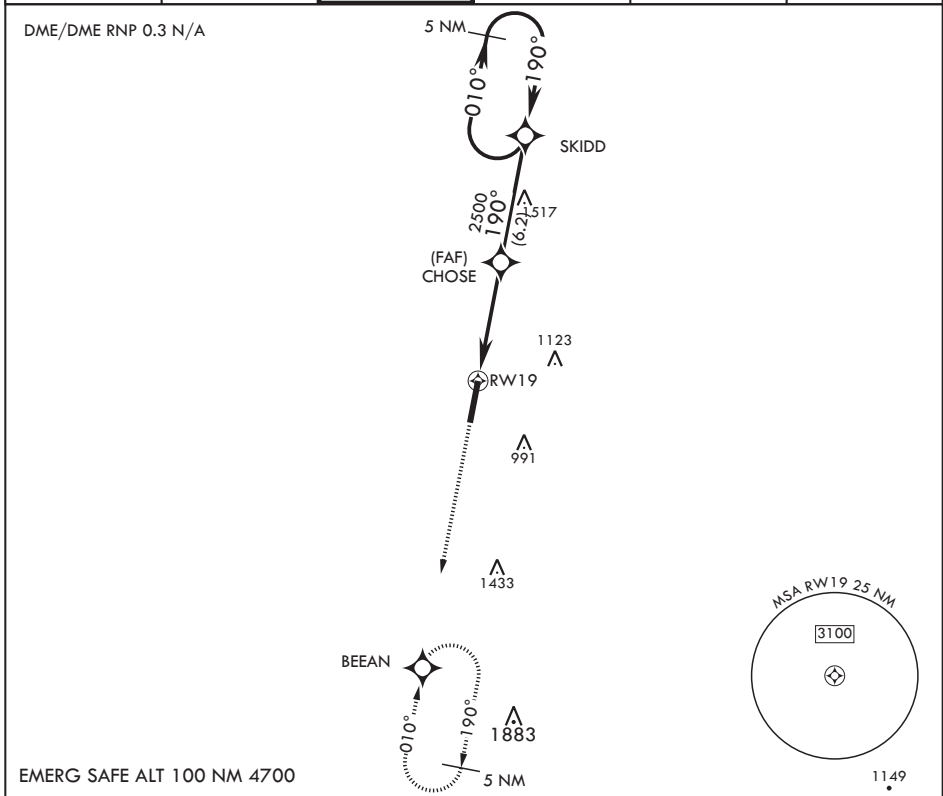
AL-496 (USAF)

WHITEMAN AFB (KSZL)

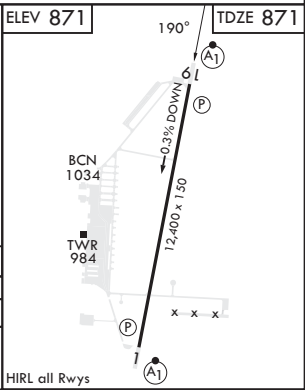
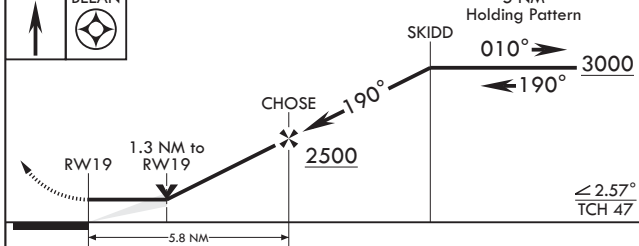
ALSF-1 MISSED APPROACH: Climb to 3000 direct BEEAN and hold.

* When ALS inop, increase CAT AB RVR to 55 and vis to 1 mile, CAT CDE RVR to 60 and vis to 1 1/8 miles.
 ** Circling not authorized W of Rwy 1-19.

ATIS*	APP CON*	TOWER*	GND CON*	CLNC DEL*	ASR
118.725 239.025	127.45 284.0	132.4 318.8	119.125 275.8	121.75 335.8	



EMERG SAFE ALT 100 NM 4700



CATEGORY	A	B	C	D	E
RNAV MDA*	1260/24 389 (400-½)		1260/35 389 (400-¾)		
CIRCLING**	1300-1 429 (500-1)	1340-1 469 (500-1)	1340-1½ 469 (500-1½)	1460-2 589 (600-2)	

KNOB NOSTER, MISSOURI 38°44'N - 93°33'W WHITEMAN AFB (KSZL)

Amdt 6 10OCT19

RNAV (GPS) RWY 19

NC-3, 20 MAR 2025 to 17 APR 2025

NC-3, 20 MAR 2025 to 17 APR 2025