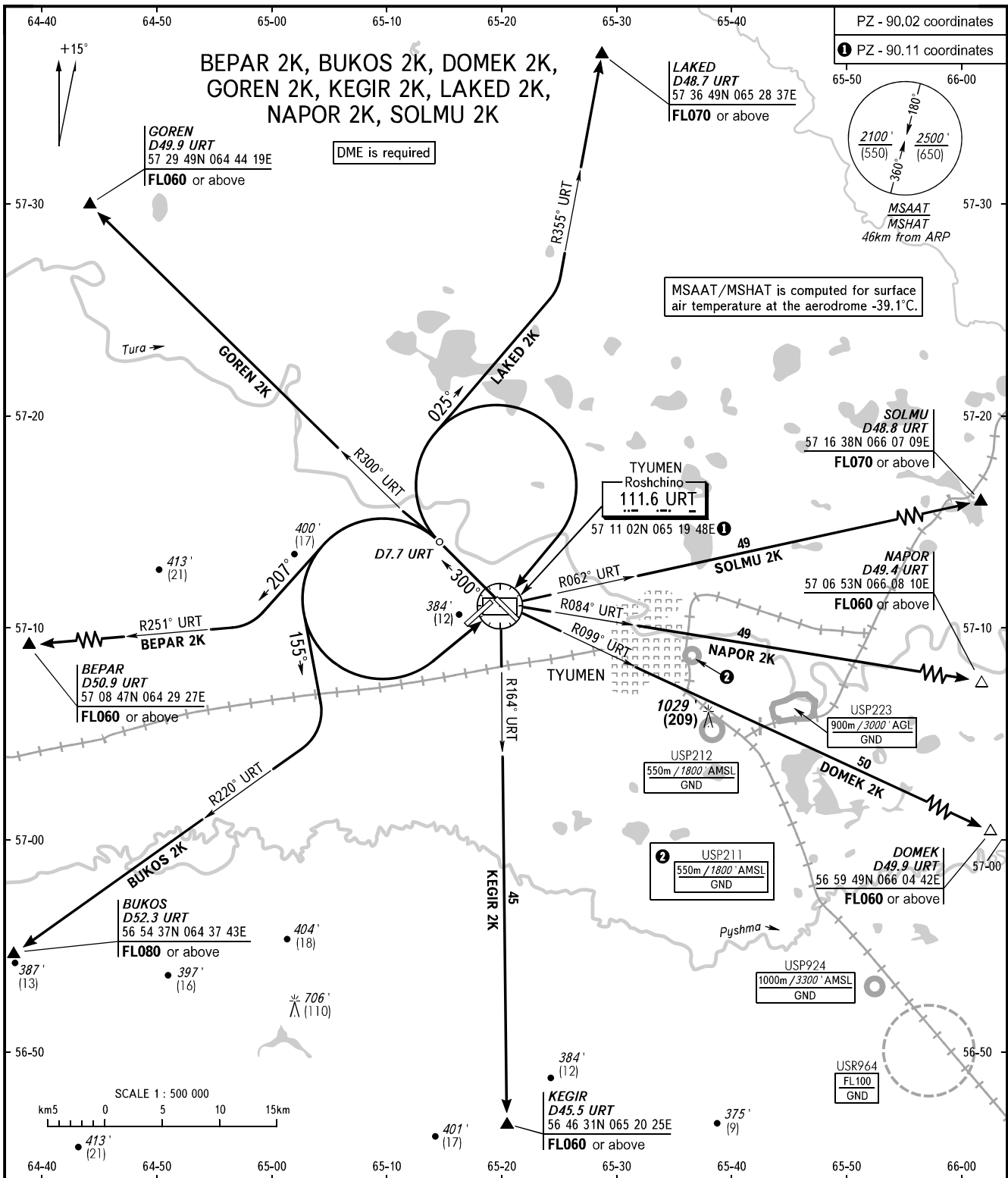


STANDARD DEPARTURE CHART  
INSTRUMENT (SID) - ICAO

TRANSITION  
ALTITUDE: 3000'

TYUMEN, RUSSIA  
ROSHCHINO  
RWY 30



START 118.200  
RADAR 126.100

MINIMUM CLIMB GRADIENTS  
(due to airspace structure):  
LAKED 2K: 3.7% up to FL070;  
GOREN 2K: 3.6% up to FL060.

BEARINGS AND TRACKS ARE MAGNETIC  
ALTITUDES IN FEET  
HEIGHTS IN METRES  
ELEVATION IN FEET AND METRES  
DISTANCES IN KILOMETRES

Alt set: -QNH(QFE on req);  
-hPa(mm on req).