

INSTRUMENT APPROACH CHART - ICAO

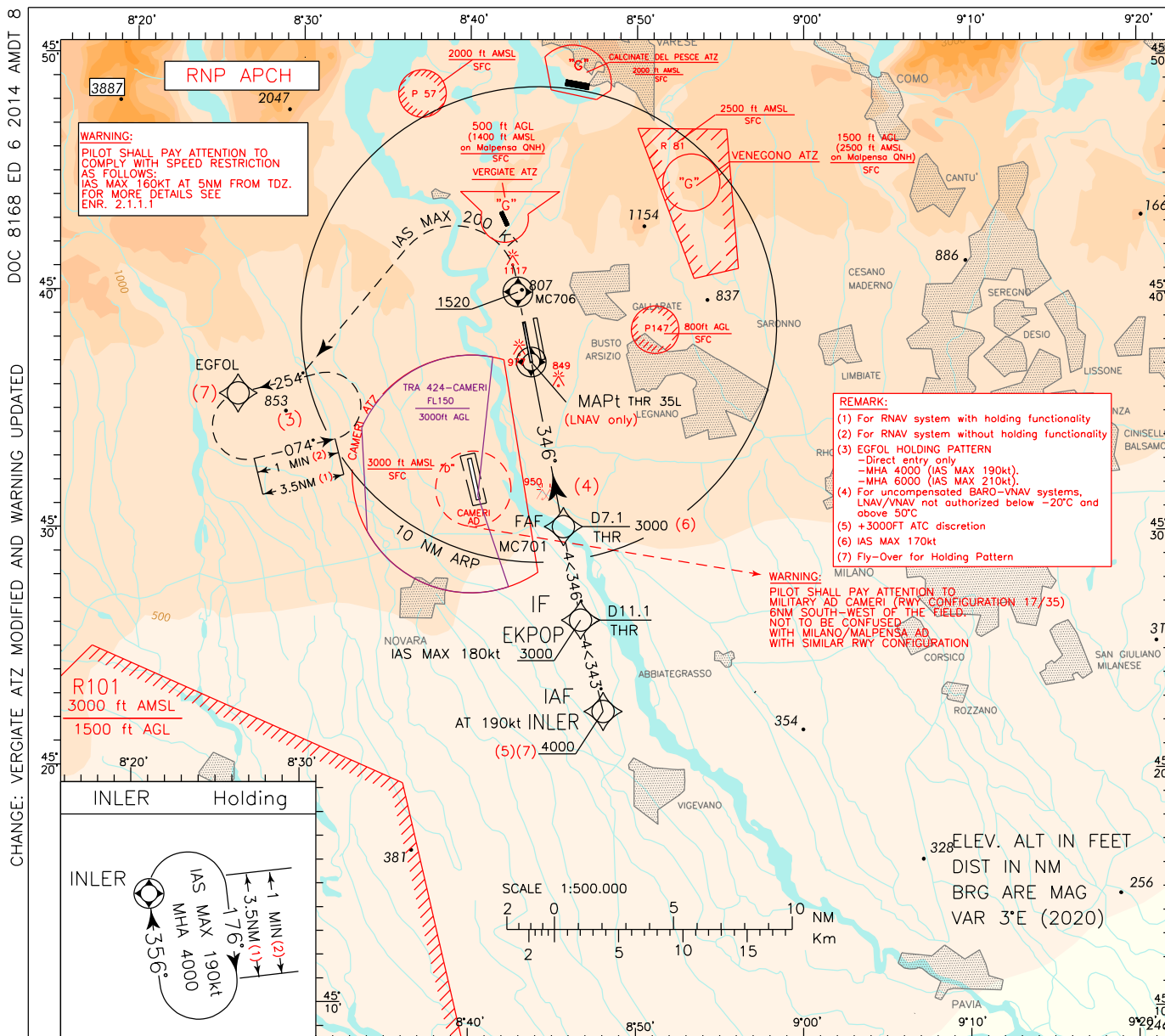
EGNOS CH 6551 E35E

AD ELEV 768

APP Milano Radar 125.630 (132.705)
 TWR Malpensa TWR 128.350
 ATIS Malpensa Arrival Information 120.025

MILANO/MALPENSA (LIMC)

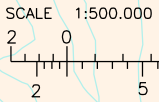
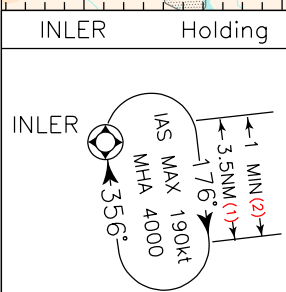
RNP RWY 35L



WARNING:
 PILOT SHALL PAY ATTENTION TO COMPLY WITH SPEED RESTRICTION AS FOLLOWS:
 IAS MAX 160KT AT 5NM FROM TDZ.
 FOR MORE DETAILS SEE ENR. 2.1.1.1

REMARK:
 (1) For RNAV system with holding functionality
 (2) For RNAV system without holding functionality
 (3) EGFOL HOLDING PATTERN
 - Direct entry only
 - MHA 4000 (IAS MAX 190kt)
 - MHA 6000 (IAS MAX 210kt)
 (4) For uncompensated BARO-VNAV systems, LNAV/VNAV not authorized below -20°C and above 50°C
 (5) +3000FT ATC discretion
 (6) IAS MAX 170kt
 (7) Fly-Over for Holding Pattern

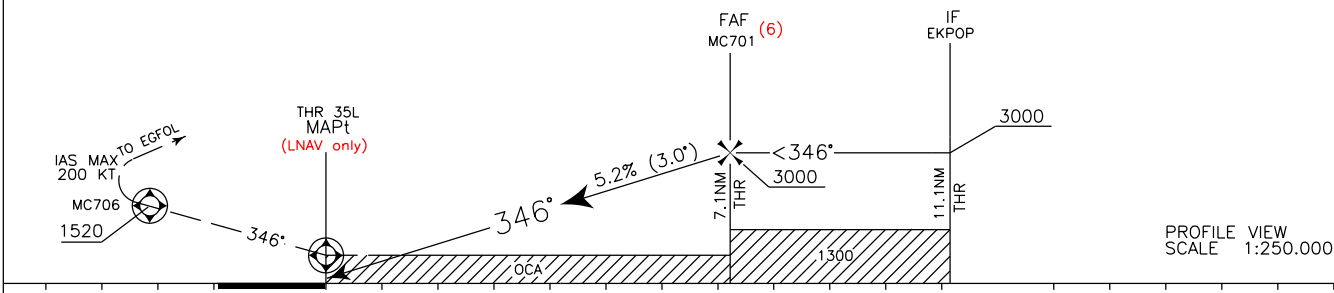
WARNING:
 PILOT SHALL PAY ATTENTION TO MILITARY AD CAMERI (RWY CONFIGURATION 17/35) 6NM SOUTH-WEST OF THE FIELD. NOT TO BE CONFUSED WITH MILANO/MALPENSA AD WITH SIMILAR RWY CONFIGURATION



ELEV. ALT IN FEET
 DIST IN NM
 BRG ARE MAG
 VAR 3°E (2020)

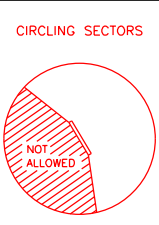
TRANSITION ALT 6000 MISSED APPROACH: Proceed on course 346° climbing to 4000 ft. At MC706 (MCA 1520ft) turn left (IAS MAX 200kt) to EGFOL on course 254° and hold.

REMARK: Missed approach obstacle clearance is provided by 2.5% gradient; 5% gradient until 2000 ft is required to overfly Vergiate ATZ. Pilots unable to comply with this gradient shall inform ATC and are advised that will fly within airspace classified "G".



THR ELEV 696 NM

STRAIGHT IN APPROACH	OCA (OCH)			
	A	B	C	D
LPV	1120 (424)	1132 (436)	1140 (444)	1151 (455)
LNAV/VNAV (4)	1120 (424)	1132 (436)	1140 (444)	1151 (455)
LNAV	1250 (554)			
CIRCLING	1450 (682)		1650 (882) 1710 (942)	



FT PER MIN	GS	FAP-THR 7.08 NM	DIST THR 35L		ALT (HGT)
			7	6	
850	160	2 : 39	7	2977 (2281)	
740	140	3 : 02	5	2658 (1962)	
635	120	3 : 32	4	2022 (1326)	
			3	1703 (1007)	
530	100	4 : 15	2	1385 (689)	
425	80	5 : 19			

