

STANDARD ARRIVAL CHART- INSTRUMENT

RJFO / OITA

RNAV STAR

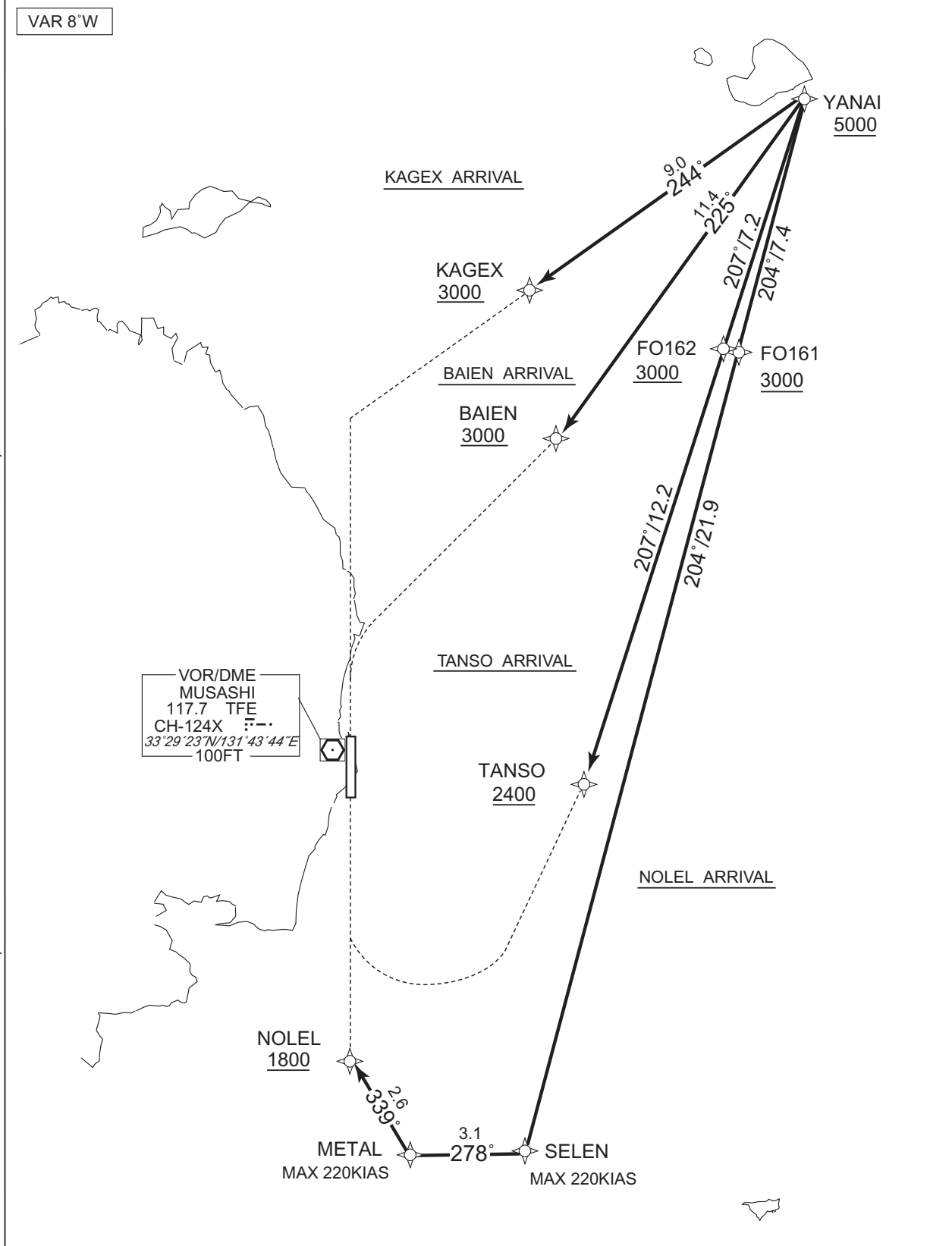
KAGEX ARRIVAL / BAIEN ARRIVAL  
NOLEL ARRIVAL / TANSO ARRIVAL

RNAV1

Note 1 ) DME/DME/IRU or GNSS required.  
2 ) RADAR service required.

VAR 8°W

CHANGE : KAGEX ARRIVAL, NOLEL ARRIVAL established. KABOS ARRIVAL, HOVER ARRIVAL abolished. PROC course. VAR.



STANDARD ARRIVAL CHART - INSTRUMENT

RJFO / OITA

RNAV STAR

KAGEX ARRIVAL

From YANAI at or above 5000FT, to KAGEX at or above 3000FT.

Critical DME	-
DME GAP	-
Inappropriate Nav aids	See AD1.1.6.10.3. Inappropriate NAVAIDs for RNAV1

Serial Number	Path Descriptor	Waypoint Identifier	Fly Over	Course °M(°T)	Magnetic Variation	Distance (NM)	Turn Direction	Altitude (FT)	Speed (KIAS)	Vertical Angle	Navigation Specification
001	IF	YANAI	-	-	-8.0	-	-	+5000	-	-	RNAV1
002	TF	KAGEX	-	244 (236.2)	-8.0	9.0	-	+3000	-	-	RNAV1

BAIEN ARRIVAL

From YANAI at or above 5000FT, to BAIEN at or above 3000FT.

Critical DME	-
DME GAP	-
Inappropriate Nav aids	See AD1.1.6.10.3. Inappropriate NAVAIDs for RNAV1

Serial Number	Path Descriptor	Waypoint Identifier	Fly Over	Course °M(°T)	Magnetic Variation	Distance (NM)	Turn Direction	Altitude (FT)	Speed (KIAS)	Vertical Angle	Navigation Specification
001	IF	YANAI	-	-	-8.0	-	-	+5000	-	-	RNAV1
002	TF	BAIEN	-	225 (217.4)	-8.0	11.4	-	+3000	-	-	RNAV1

TANSO ARRIVAL

From YANAI at or above 5000FT, to FO162 at or above 3000FT, to TANSO at or above 2400FT.

Critical DME	-
DME GAP	-
Inappropriate Nav aids	See AD1.1.6.10.3. Inappropriate NAVAIDs for RNAV1

Serial Number	Path Descriptor	Waypoint Identifier	Fly Over	Course °M(°T)	Magnetic Variation	Distance (NM)	Turn Direction	Altitude (FT)	Speed (KIAS)	Vertical Angle	Navigation Specification
001	IF	YANAI	-	-	-8.0	-	-	+5000	-	-	RNAV1
002	TF	FO162	-	207 (199.4)	-8.0	7.2	-	+3000	-	-	RNAV1
003	TF	TANSO	-	207 (199.4)	-8.0	12.2	-	+2400	-	-	RNAV1

CHANGE : KAGEX ARRIVAL established. PROC course. VAR.

STANDARD ARRIVAL CHART - INSTRUMENT

RJFO / OITA

RNAV STAR

NOLEL ARRIVAL

From YANAI at or above 5000FT, to FO161 at or above 3000FT, to SELEN, to METAL, to NOLEL at or above 1800FT.

Critical DME	-
DME GAP	-
Inappropriate Nav aids	See AD1.1.6.10.3. Inappropriate NAVAIDs for RNAV1

Serial Number	Path Descriptor	Waypoint Identifier	Fly Over	Course °M(°T)	Magnetic Variation	Distance (NM)	Turn Direction	Altitude (FT)	Speed (KIAS)	Vertical Angle	Navigation Specification
001	IF	YANAI	-	-	-8.0	-	-	+5000	-	-	RNAV1
002	TF	FO161	-	204 (196.4)	-8.0	7.4	-	+3000	-	-	RNAV1
003	TF	SELEN	-	204 (196.4)	-8.0	21.9	-	-	-220	-	RNAV1
004	TF	METAL	-	278 (270.5)	-8.0	3.1	-	-	-220	-	RNAV1
005	TF	NOLEL	-	339 (330.5)	-8.0	2.6	-	+1800	-	-	RNAV1

Waypoint Coordinates

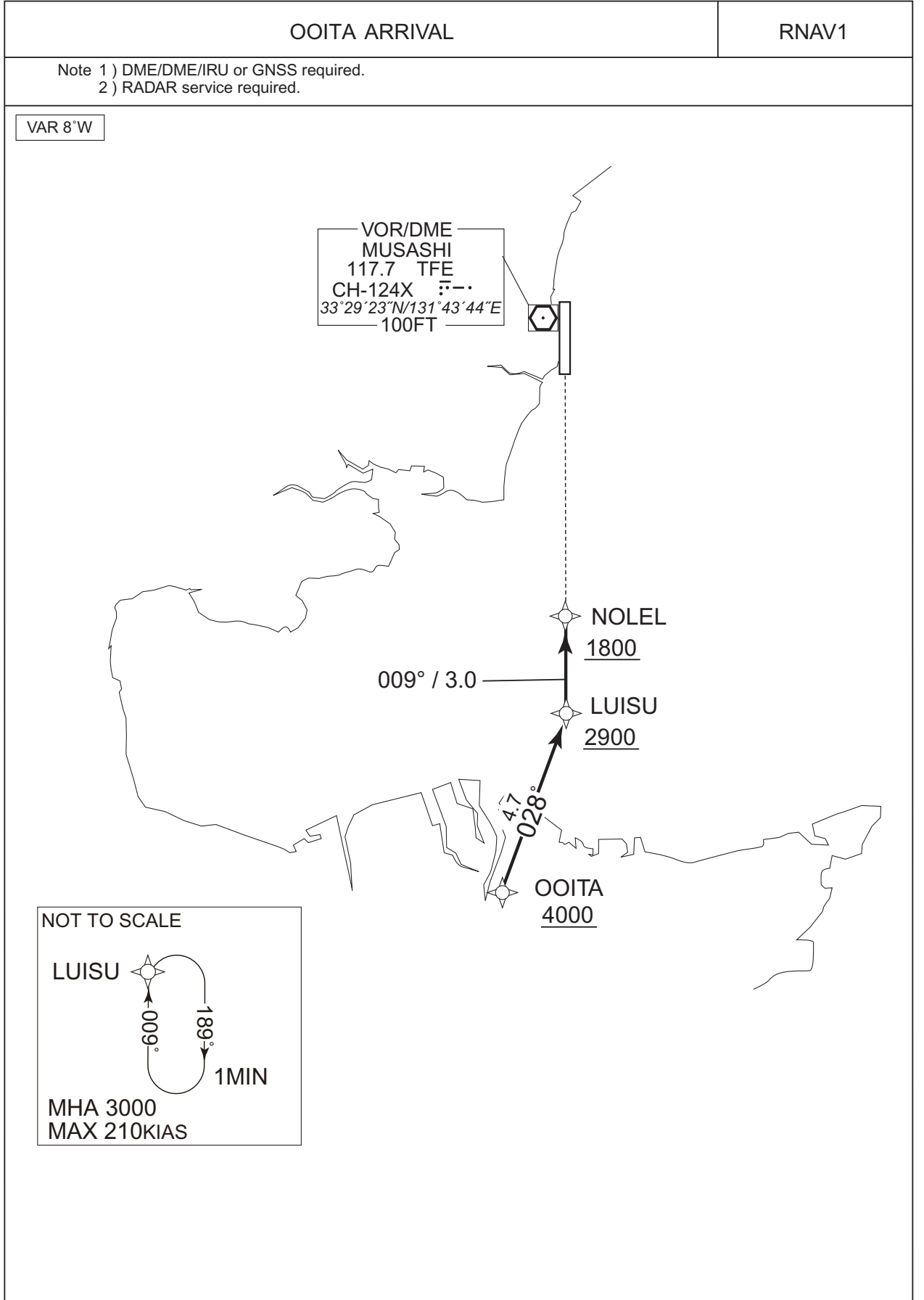
Waypoint Identifier	Coordinates
YANAI	334622.9N / 1315917.1E
KAGEX	334121.2N / 1315016.7E
BAIEN	333720.4N / 1315059.8E
FO162	333936.2N / 1315624.8E
TANSO	332806.6N / 1315133.7E
FO161	333918.2N / 1315646.6E
SELEN	331818.8N / 1314923.1E
METAL	331820.3N / 1314541.2E
NOLEL	332036.2N / 1314409.4E

CHANGE : NOLEL ARRIVAL established. Waypoint Coordinates added. .

STANDARD ARRIVAL CHART - INSTRUMENT

RJFO / OITA

RNAV STAR RWY01



CHANGE : New PROC.

STANDARD ARRIVAL CHART - INSTRUMENT

RJFO / OITA

RNAV STAR

OOITA ARRIVAL

From OOITA at or above 4000FT, to LUISU at or above 2900FT, to NOLEL at or above 1800FT.

Critical DME	—
DME GAP	—
Inappropriate Nav aids	See AD1.1.6.10.3. Inappropriate NAVAIDs for RNAV1

Serial Number	Path Descriptor	Waypoint Identifier	Fly Over	Course °M(°T)	Magnetic Variation	Distance (NM)	Turn Direction	Altitude (FT)	Speed (KIAS)	Vertical Angle	Navigation Specification
001	IF	OOITA	—	—	-8.0	—	—	+4000	—	—	RNAV1
002	TF	LUISU	—	028 (020.2)	-8.0	4.7	—	+2900	—	—	RNAV1
003	TF	NOLEL	—	009 (000.5)	-8.0	3.0	—	+1800	—	—	RNAV1

Path	Waypoint Identifier	Inbound Course °M(°T)	Magnetic Variation	Outbound Time (MIN)	Turn Direction	Minimum Altitude (FT)	Maximum Altitude (FT)	Speed (KIAS)	Navigation Specification
Hold	LUISU	009 (000.5)	-8.0	1.0(-14000)	R	3000	FL140	-210(-14000)	RNAV1

Waypoint Coordinates

Waypoint Identifier	Coordinates
OOITA	331313.2N / 1314211.7E
LUISU	331735.8N / 1314407.5E
NOLEL	332036.2N / 1314409.4E

CHANGE : New PROC.