

STANDARD DEPARTURE CHART -INSTRUMENT

RJFU / NAGASAKI

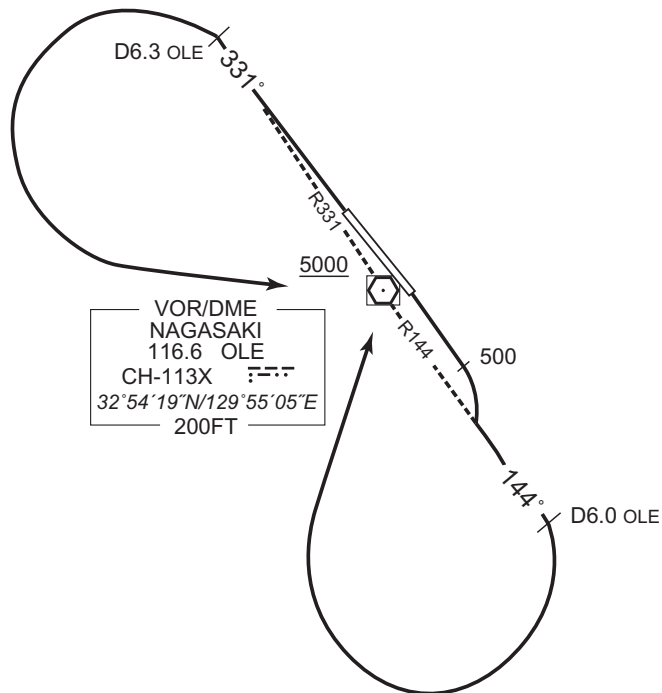
SID

NAGASAKI REVERSAL FIVE DEPARTURE

RWY 14: Climb RWY HDG to 500FT, climb via OLE R144 to 6.0DME, turn right, direct to OLE VOR/DME.
Cross OLE VOR/DME at or above 5000FT.

RWY 32: Climb via OLE R331 to 6.3DME, turn left, direct to OLE VOR/DME.
Cross OLE VOR/DME at or above 5000FT.

Note RWY 14: 5.0% climb gradient required up to 1800FT.
OBST ALT 1575FT located at 7.7NM 165° FM end of RWY14.
RWY 32: 5.0% climb gradient required up to 1600FT.
OBST ALT 1969FT located at 8.0NM 272° FM end of RWY32.



CHANGE : Description of PROC name.