

STANDARD DEPARTURE CHART -INSTRUMENT

RJOO / OSAKA INTL

SID

IZUMI ONE DEPARTURE

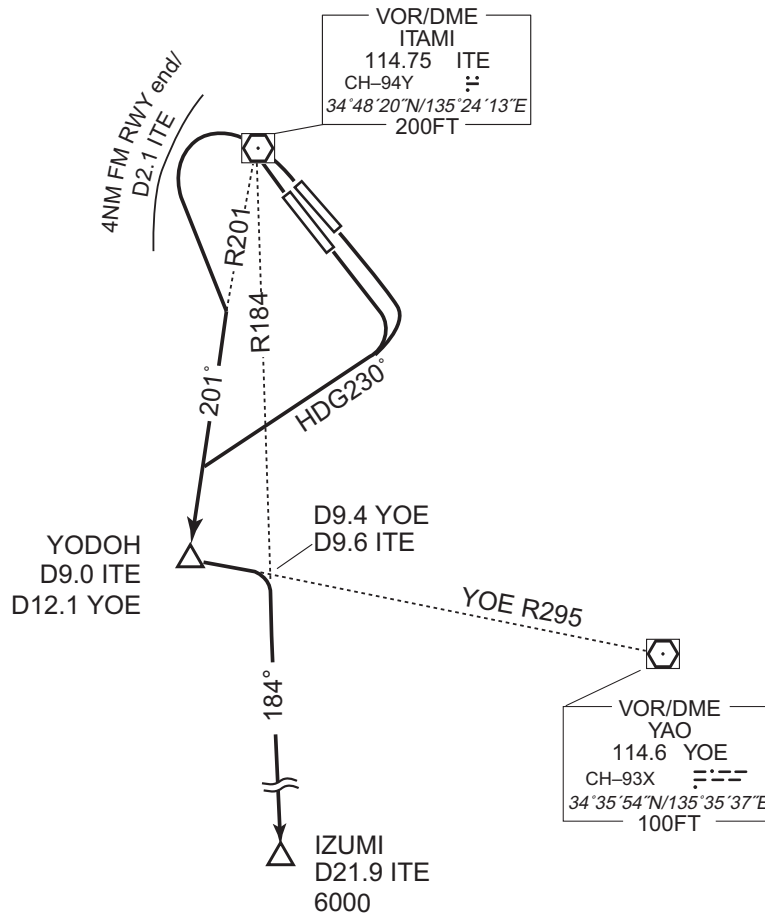
RWY 32R/32L : Climb RWY HDG to 500FT or above, turn left within 4NM from RWY end/ITE 2.1DME, via ITE R201 to YODOH,...

RWY 14R/14L : Climb RWY HDG to 500FT or above, turn right HDG230° to intercept and proceed via ITE R201 to YODOH,...

...turn left, via YOE R295 to intercept and proceed via ITE R184 to IZUMI.
 Cross IZUMI at or above 6000FT.

Note : When take off RWY 14R/14L, following climb gradient should be maintained until 500FT.

Speed (Knots)	60	90	120	150	180	210
Rate (Feet/Min)	300	450	600	750	900	1050



CHANGE : Description of PROC name.