

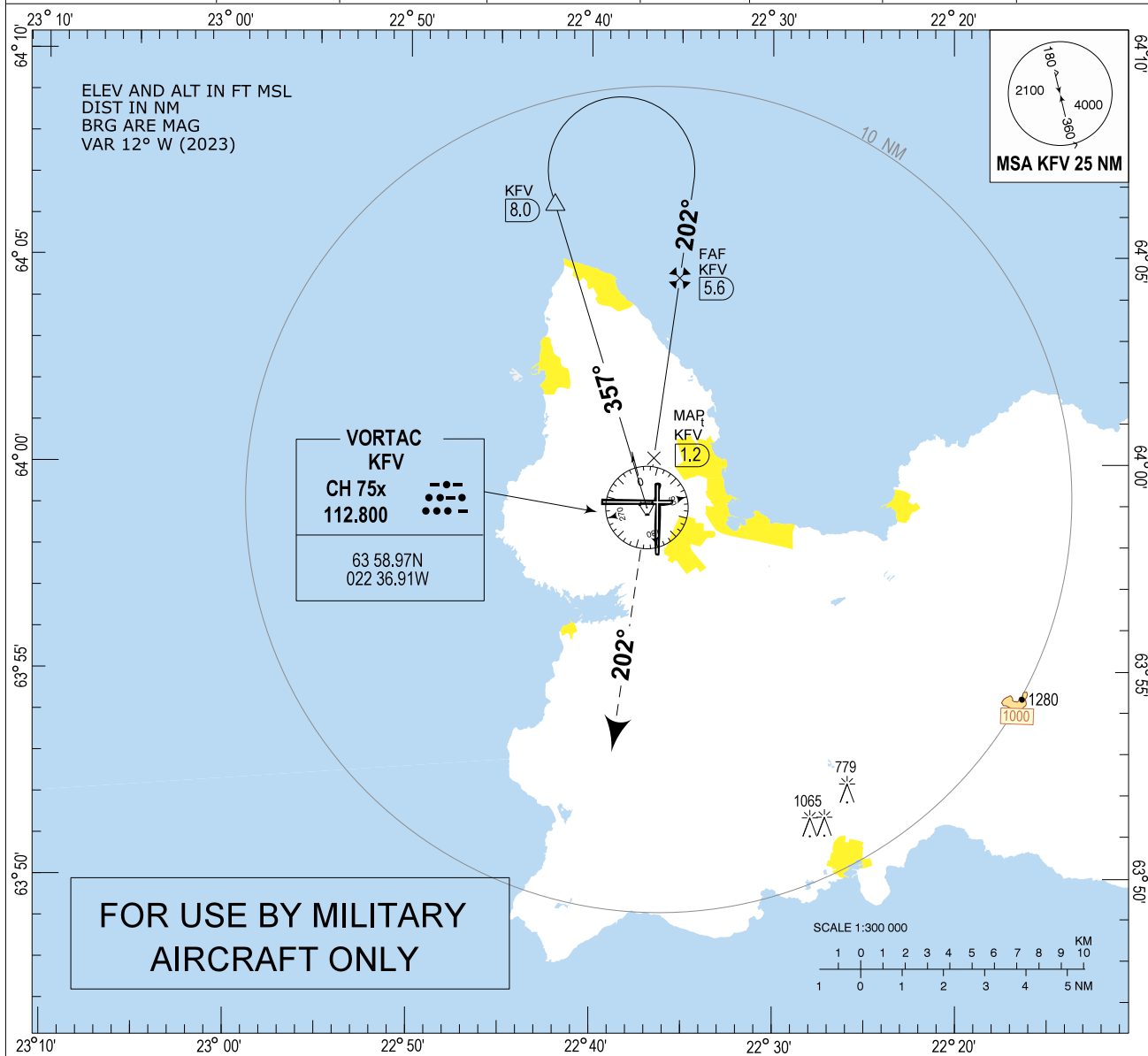
Keflavik MILITARY VORTAC RWY 19 (CAT C-D)

MIPS
INSTRUMENT APPROACH CHART

VORTAC RWY 19 (CAT C-D)
KEFLAVIK (BIKF)

AD ELEV 170

REYKJAVIK CONTROL 119.700	KEFLAVIK ATIS 128.300 311.600		KEFLAVIK APPROACH 119.300	KEFLAVIK TOWER 118.300	KEFLAVIK GND 121.900		
VORTAC KfV CH 75x/112.800	APP CRS 202°	FAF ALT 1800 FT	Descent GR 3.0% (5.20°)	MDA 580 / 600	THR ELEV 161 FT	ALS length 900 M	LDA 10020 FT



CHANGES: RESTRICTED AREA BIR2 REMOVED

MISSED APPROACH:

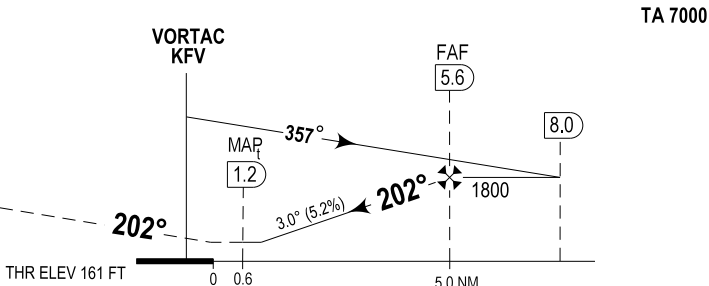
Climb direct KfV VOR continue on R 202 to 3000.
Expect vectoring by KEFLAVIK APP.

RCF:

Continue on course 202°, passing KfV 20 DME turn right
direct KfV at 3000 for new approach.

DIST TO KfV	2	3	4	5
ALTITUDE	670	985	1305	1620

Timing not authorized for defining MAP



MIPS	CATEGORY	C		D	
	VORTAC 19	580	-1.2 419 (500-1.2/1.9)	600	-1.3 439 (500-1.3/2.0)
	CIRCLING	870	-3.3 701 (800-3.3)	940	-3.6 771 (800-3.6)

VORTAC RWY 19 (CAT C-D)

KEFLAVIK (BIKF)

THIS PAGE INTENTIONALLY LEFT BLANK