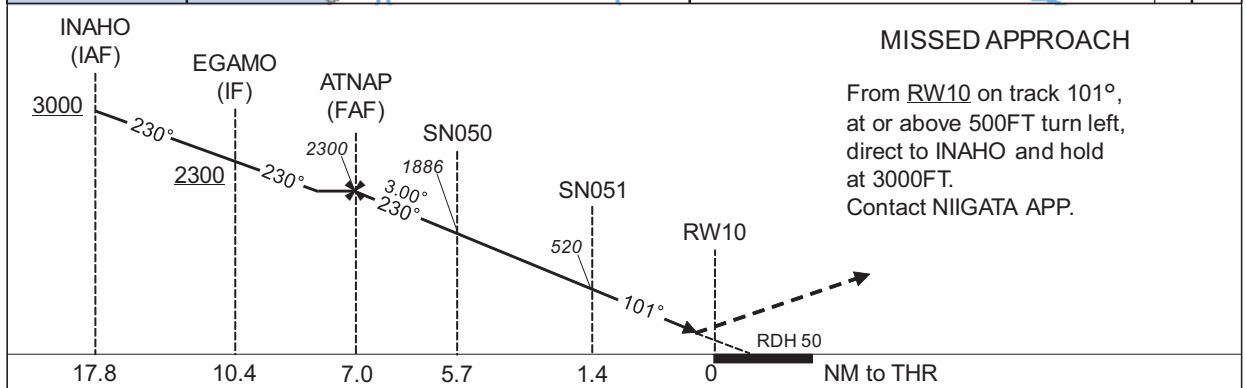
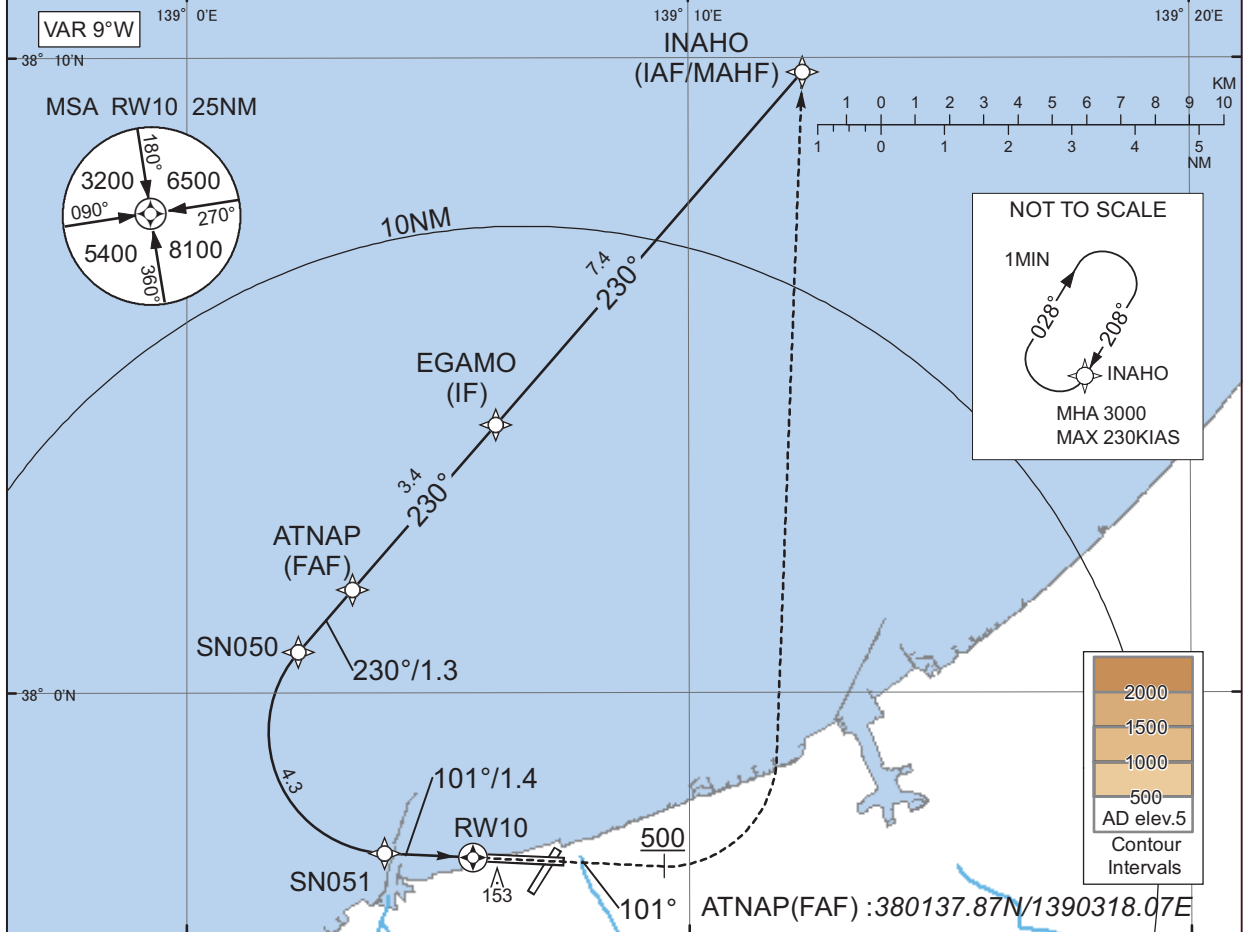


INSTRUMENT APPROACH CHART

RJSN / NIIGATA RNP Y RWY10(AR)

NIIGATA APP 121.4	RNP AR RF required.	NIIGATA TOWER 118.0 – 126.2	RADAR AVBL ATIS 128.45
----------------------	------------------------	--------------------------------	---------------------------

For uncompensated Baro-VNAV systems, procedure not authorized below -10°C / above 45°C



CHANGE : New PROC.

MINIMA	THR elev. 27	AD elev. 5
	RNP 0.30	
CAT	DA(H)	CMV
A	-	-
B	-	-
C	305(278)	1200
D	315(288)	1400

Authorization Required

INSTRUMENT APPROACH CHART

RJSN / NIIGATA

RNP Y RWY10(AR)

Coding Table

Serial Number	Path Descriptor	Waypoint Identifier	Fly Over	Course °M(°T)	Magnetic Variation	Distance (NM)	Turn Direction	Altitude (FT)	Speed (KIAS)	VPA/ RDH (°/FT)	RNP Value
001	IF	INAHO	-	-	-8.6	-	-	+3000	-	-	-
002	TF	EGAMO	-	230 (221.0)	-8.6	7.4	-	+2300	-	-	1.0
003	TF	ATNAP	-	230 (220.9)	-8.6	3.4	-	2300	-	-	1.0
004	TF	SN050	-	230 (220.9)	-8.6	1.3	-	1886	-	-3.00	0.3
005	RF Center: SNRF1 r=1.91NM	SN051	-	-	-8.6	4.3	L	520	-	-3.00	0.3
006	TF	RW10	Y	101 (092.7)	-8.6	1.4	-	77	-	-3.00/50	0.3
007	FA	-	-	101 (092.7)	-8.6	-	-	+500	-	-	1.0
008	DF	INAHO	-	-	-8.6	-	L	3000	-	-	1.0

Path	Waypoint Identifier	Inbound Course °M(°T)	Magnetic Variation	Outbound Time (MIN)	Turn Direction	Minimum Altitude (FT)	Maximum Altitude (FT)	Speed (KIAS)	RNP Value
Hold	INAHO	208 (199.1)	-8.6	1.0 (-14000)	R	3000	FL140	-230 (-14000)	1.0

Waypoint Coordinates

Waypoint Identifier	Coordinates	RF Arc Center Identifier	Coordinates
INAHO	380947.11N / 1391217.05E	SNRF1	375923.46N / 1390402.94E
EGAMO	380413.79N / 1390609.55E		
ATNAP	380137.87N / 1390318.07E		
SN050	380038.89N / 1390213.27E		
SN051	375728.60N / 1390356.21E		
RW10	375724.71N / 1390541.79E		

CHANGE : New PROC.