

WICHITA FALLS, TEXAS

RNAV (GPS) RWY 15R

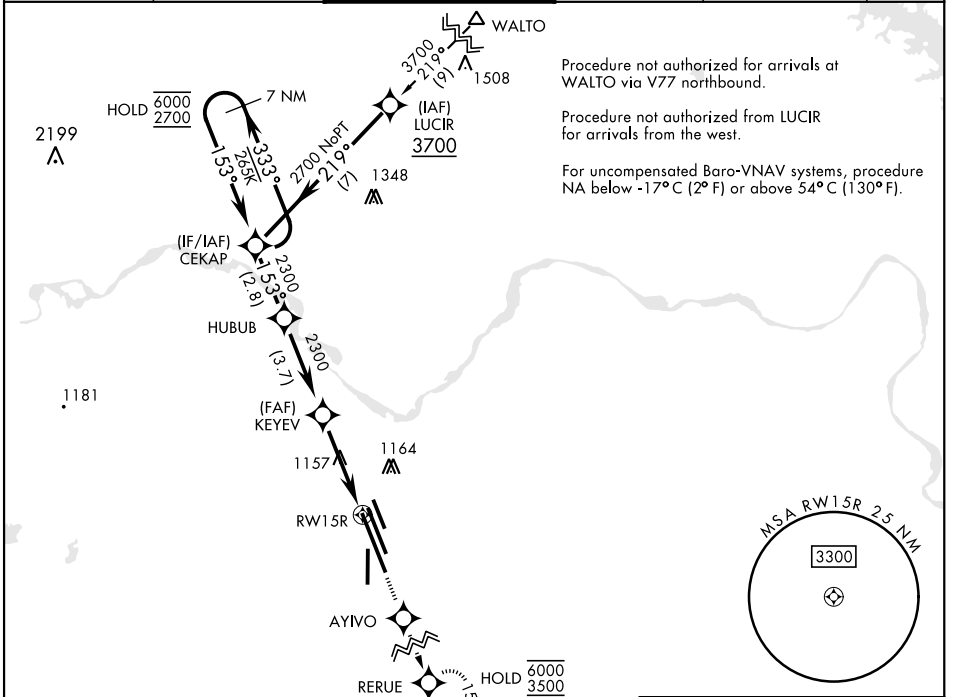
| | |
|-------------|------------------------|
| APCH CRS | Rwy ldg 13,100 |
| 153° | TDZE 998 |
| | Arprt Elev 1019 |

[USAF]

SHEPPARD AFB/WICHITA FALLS MUNI (KSPS)

| | | |
|--|-------------|---|
| RNP APCH - GPS | MALS R (AS) | MISSED APPROACH: Climb to 3500 direct AYIVO and via 153° track to RERUE and hold. |
| <p>▼ * When ALS inop, increase CAT AB vis to ¾ mile; CAT CDE vis to ⅞ mile. ** When ALS inop, increase CAT AB vis to 1 mile; CAT CDE vis to 1¼ miles. *** Circling not authorized West of Rwy 15R-33L.</p> | | |

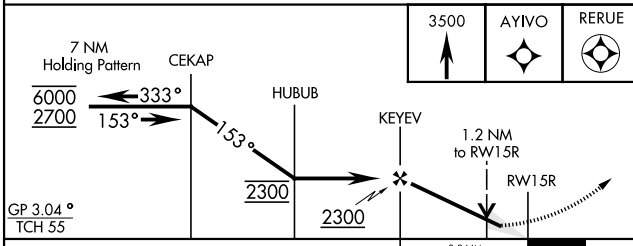
| | | | | | |
|---------------------|----------------------|--------------------------------|--------------------|----------------------|-----|
| ATIS ★ | APP CON | TOWER ★ | GND CON | CLNC DEL | ASR |
| 132.05 269.9 | 118.2 269.025 | 119.75 0 279.525 (CTAF) | 125.5 289.4 | 121.2 282.225 | |



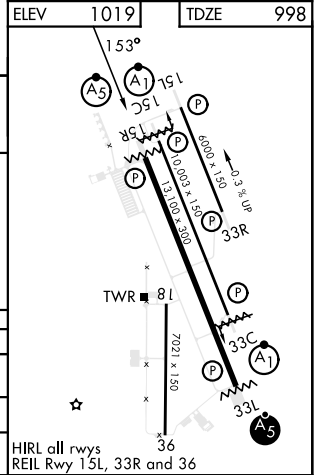
SC-2, 20 MAR 2025 to 17 APR 2025

SC-2, 20 MAR 2025 to 17 APR 2025

EMERG SAFE ALT 100 NM 4600



| CATEGORY | A | B | C | D | E |
|---------------|-----------------------|-----------------------|-------------------------|--------|---------------|
| LNAV/VNAV DA* | 1249-½ 251 (300-½) | 1252-½ 254 (300-½) | 1260-½ 262 (300-½) | 1271-½ | 273 (300-½) |
| LNAV MDA** | 1420-½ | 422 (500-½) | 1420-¾ | 422 | (500-¾) |
| CIRCLING*** | 1420-1 401 (500-1) | 1480-1 461 (500-1) | 1480-1½ 461 (500-1½) | 2100-3 | 1081 (1100-3) |



WICHITA FALLS, TEXAS

33°59'N-98°30'W

SHEPPARD AFB/WICHITA FALLS MUNI (KSPS)

Amdt 5 23JAN25

RNAV (GPS) RWY 15R