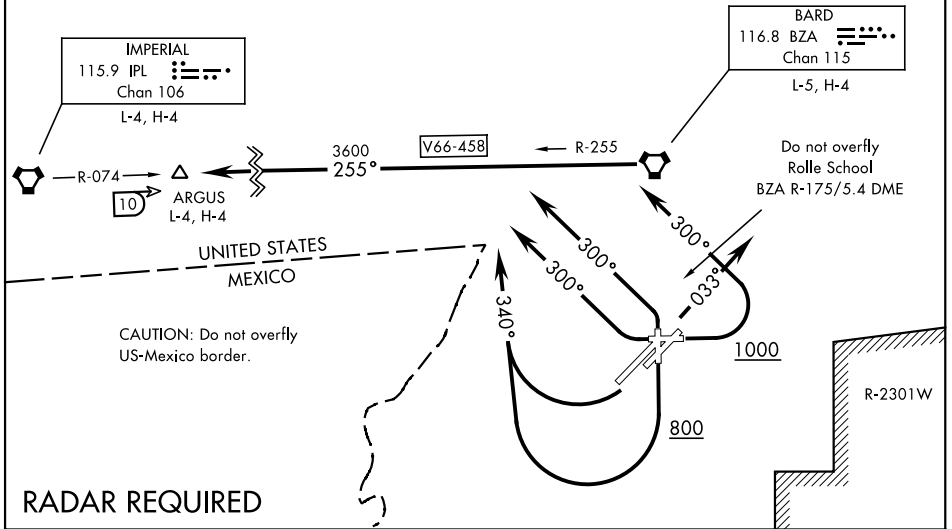


ARGUS FIVE DEPARTURE (ARGUS5•ARGUS)

YUMA, ARIZONA

ATIS ★
 118.8 273.5
 CLNC DEL
 118.0 336.4
 GND CON
 121.9 314.0
 YUMA TOWER ★
 119.3 377.075
 YUMA DEP CON
 125.55 282.325

AL-511 [USN]



SW-4, 20 MAR 2025 to 17 APR 2025

SW-4, 20 MAR 2025 to 17 APR 2025

DEPARTURE ROUTE DESCRIPTION

TAKE-OFF RWY 3L/R: Climb heading 033°, then RADAR vectors to intercept BZA VORTAC R-255. Thence...

TAKE-OFF RWY 8: Climb heading 078° to 1000, then climbing left turn heading 300°, then RADAR vectors to intercept BZA VORTAC R-255. Thence...

TAKE-OFF RWY 17: Climb heading 168° to 800, then climbing right turn heading 340°, then RADAR vectors to intercept BZA VORTAC R-255. Thence...

TAKE-OFF RWY 21L/R: Climbing right turn heading 340°, then RADAR vectors to intercept BZA VORTAC R-255. Thence...

TAKE-OFF RWY 26: Climbing right turn heading 300°, then RADAR vectors to intercept BZA VORTAC R-255. Thence...

TAKE-OFF RWY 35: Climbing left turn heading 300°, then RADAR vectors to intercept BZA VORTAC R-255. Thence...

...via BZA R-255 to ARGUS, then via assigned route. Maintain assigned altitude. Expect clearance to filed altitude/flight level 10 minutes after departure.

ARGUS FIVE DEPARTURE (ARGUS5•ARGUS)

YUMA, ARIZONA