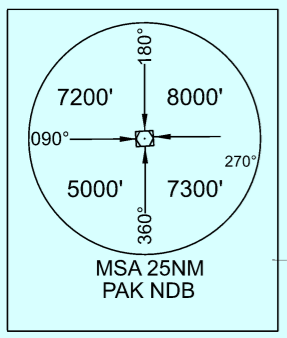
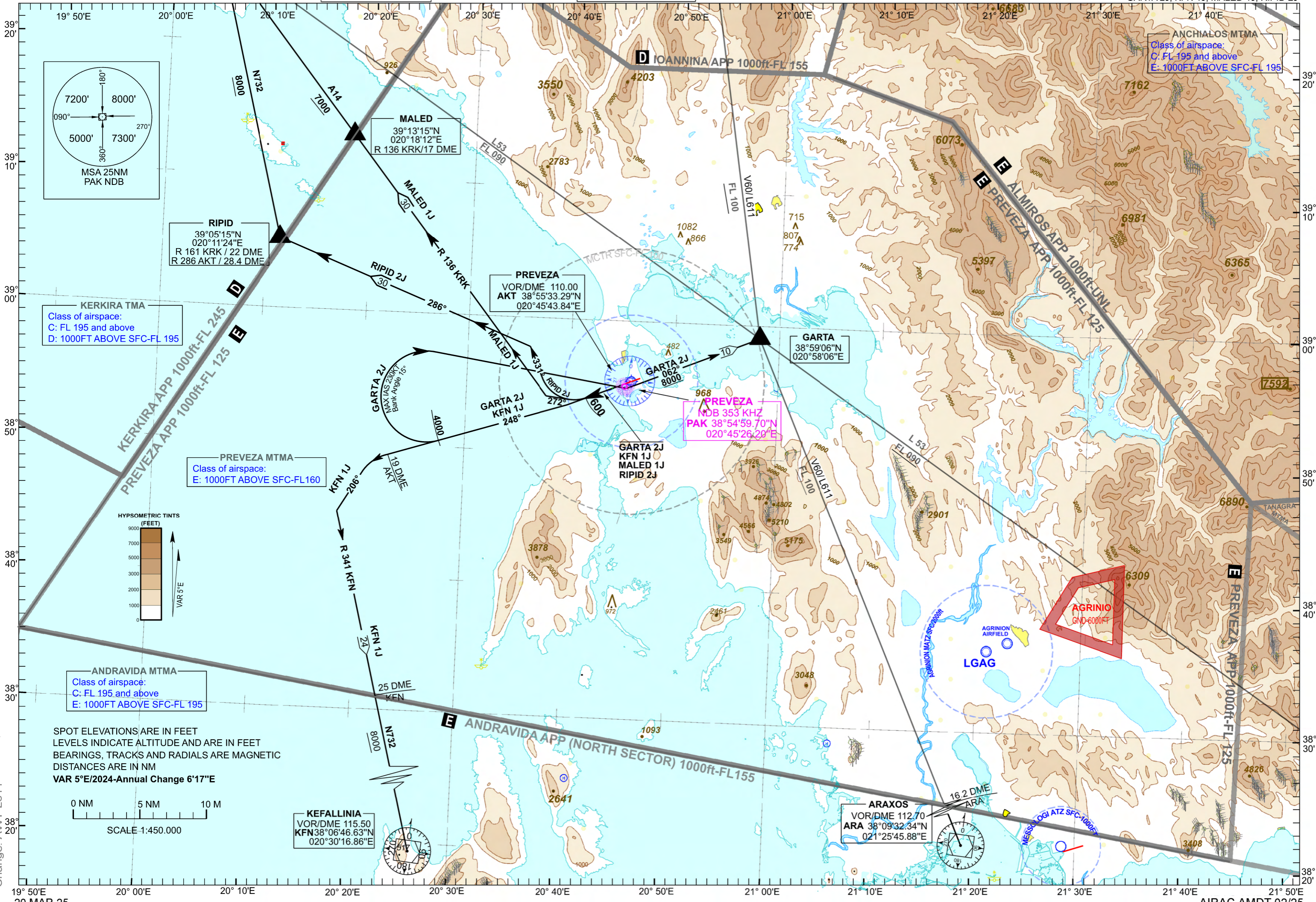


TRANSITION ALTITUDE
8000 FT

AKTION TWR 120.450
APP 120.450



RIPID
39°05'15"N
020°11'24"E
R 161 KRK / 22 DME
R 286 AKT / 28.4 DME

MALED
39°13'15"N
020°18'12"E
R 136 KRK/17 DME

PREVEZA
VOR/DME 110.00
AKT 38°55'33.29"N
020°45'43.84"E

GARTA
38°59'06"N
020°58'06"E

PREVEZA
MDB 353 KHZ
PAK 38°54'59.70"N
020°45'26.29"E

GARTA 2J
KFN 1J
MALED 1J
RIPID 2J

AGRINIO
GND-6000FT

ARAXOS
VOR/DME 112.70
ARA 38°09'32.34"N
021°25'45.88"E

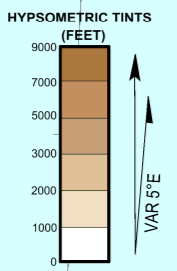
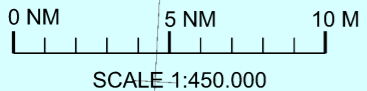
KEFALLINIA
VOR/DME 115.50
KFN 38°06'46.63"N
020°30'16.86"E

KERKIRA TMA
Class of airspace:
C: FL 195 and above
D: 1000FT ABOVE SFC-FL 195

PREVEZA MTMA
Class of airspace:
E: 1000FT ABOVE SFC-FL160

ANDRAVIDA MTMA
Class of airspace:
C: FL 195 and above
E: 1000FT ABOVE SFC-FL 195

SPOT ELEVATIONS ARE IN FEET
LEVELS INDICATE ALTITUDE AND ARE IN FEET
BEARINGS, TRACKS AND RADIALS ARE MAGNETIC
DISTANCES ARE IN NM
VAR 5°E/2024-Annual Change 6'17"E



Change: AWY L611

PREVEZA /AKTION AIRPORT

PAK NDB - RWY 24

SIDs : MALED 1J, RIPID 2J, GARTA 2J, KFN 1J

GENERAL:

When for these SIDs an altitude higher than the transition altitude is designated, then ATC unit shall specify an equivalent flight level.

DESIGNATOR	DESCRIPTION	MAX IAS/ BANK ANGLE	MIN CLIMB GRADIENT (PDG)	ALTITUDES
MALED 1J	“Climb straight ahead, at 600ft turn right to track 272 ⁰ , intercept and follow R 136 KRK and proceed to MALED to join AWY A14.”	210KT/15 ⁰ until turn at 600ft is completed.	4.5 % (273 ft/nm) up to 7000ft.	Cross MALED at 7000ft or above.
RIPID 2J	“Climb straight ahead, at 600ft turn right to track 331 ⁰ , intercept and follow bearing 286 ⁰ from PAK and proceed to RIPID. Turn right to join AWY N732.”	210KT/15 ⁰ until turn at 600ft is completed.	4.5 % (273 ft/nm) up to 8000ft.	Cross RIPID at 8000ft or above.
GARTA 2J	“Climb straight ahead, intercept and follow bearing 248 ⁰ from PAK. At 4000ft turn right and proceed to PAK. Then turn left, intercept and follow bearing 062 ⁰ from PAK proceed to GARTA to join AWY L53 or V60 or L611.”	230KT/15 ⁰ until turn at 4000ft is completed.	4.5 % (273 ft/nm) up to FL100, if you join AWY V60, or up to FL 090, if you join AWY L53.	Cross PAK at 8000ft or above. Cross GARTA at FL100 or above, if you join AWY L611 or V60 Cross GARTA at FL090 or above, if you join AWY L53.
KFN 1J	“Climb straight ahead, intercept and follow bearing 248 ⁰ from PAK. At bearing 248 ⁰ /19 DME AKT. Fix turn left to track 206 ⁰ . Intercept and follow R 341 KFN to join AWY N732 and proceed to KFN.”	230KT/15 ⁰ until turn at bearing 248 ⁰ / 19 DME Fix is completed.	4.5 % (273 ft/nm) up to 8000ft.	Cross R 341 KFN/25 DME Fix at 8000ft or above.