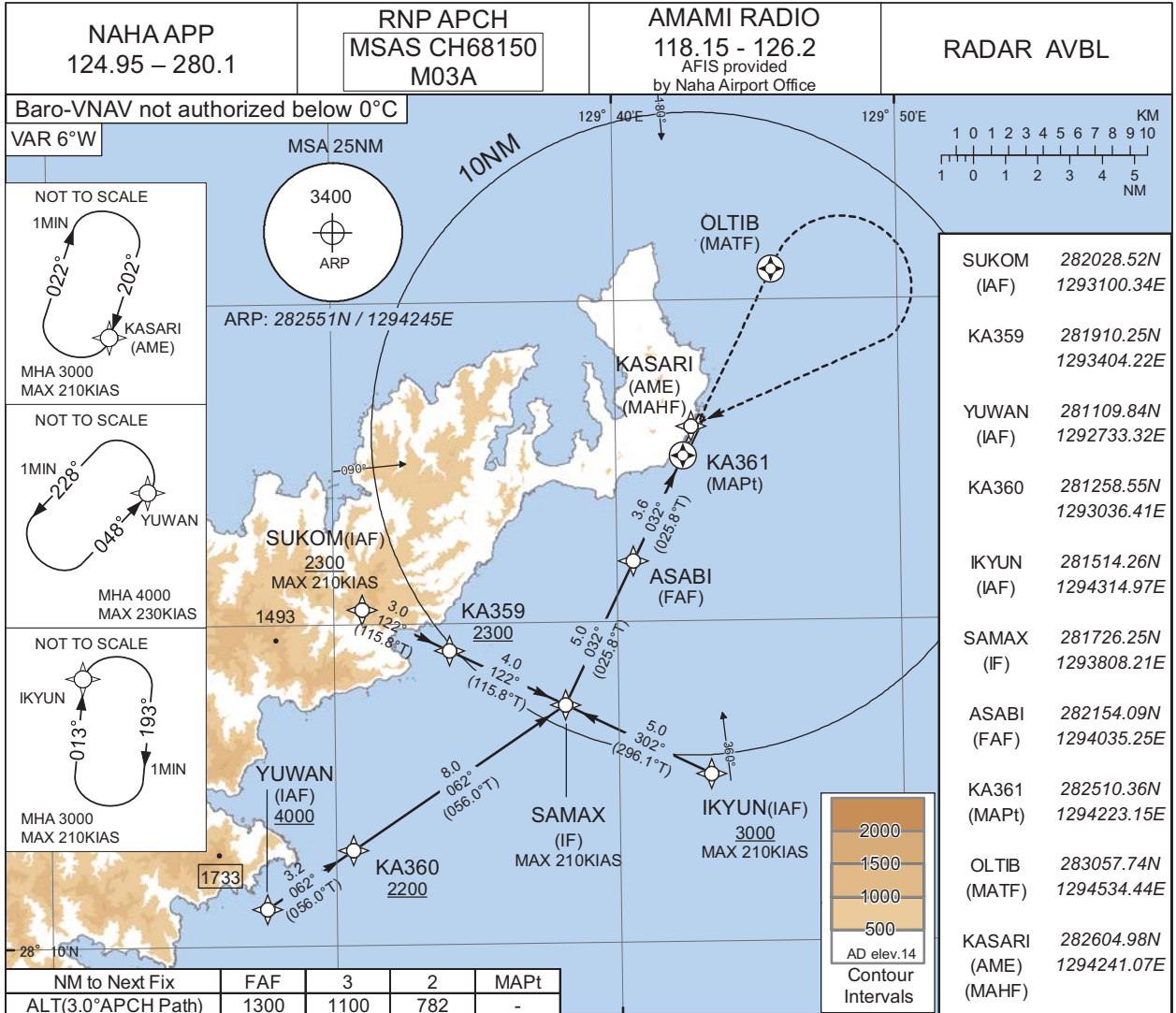


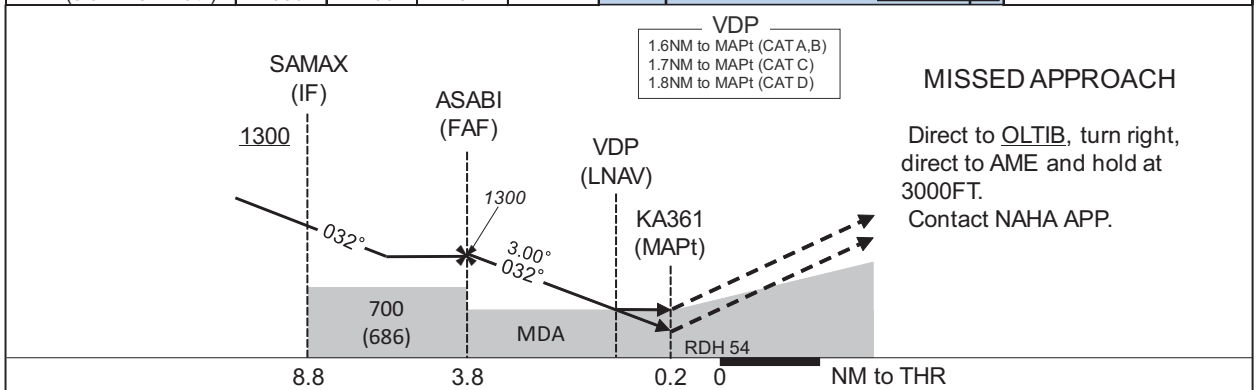
INSTRUMENT APPROACH CHART

RJKA / AMAMI

RNP Z RWY03



CHANGE : Description of RADAR Service. Missed APCH PROC.



Missed APCH climb gradient MNM 5.0%

MINIMA		THR elev. 27		AD elev. 14				
CAT	LPV		LNAV/VNAV		LNAV		CIRCLING	
	DA(H)	RVR/CMV	DA(H)	RVR/CMV	MDA(H)	RVR/CMV	MDA(H)	VIS
A	277(250)	800	600(573)	1000	600(586)	1000	600(586)	1600
B								
C	282(255)		640(613)	1200	640(626)	1200	640(626)	2400
D	292(265)	1200	670(643)	1600	670(656)	1800	670(656)	3200

MINIMA with Missed APCH climb gradient of 2.5% are not established.
Circling to EAST side of RWY only.

INSTRUMENT APPROACH CHART

RJKA / AMAMI

RNP Z RWY03

FAS DATA BLOCK

Operation type	0	LTP/FTP ellipsoidal height	+00373
SBAS service provider identifier	2	FPAP latitude	282619.5815N
Airport identifier	RJKA	FPAP longitude	1294301.2745E
Runway	03	Threshold crossing height	00016.5
Approach performance designator	0	TCH units selector	1
Route indicator	Z	Glide path angle	03.00
Reference path data selector	0	Course width at threshold	105.00
Reference path ID	M03A	∠ length offset	0000
LTP/FTP latitude	282521.1620N	HAL	40.0
LTP/FTP longitude	1294229.1275E	VAL	50.0
CRC remainder	2C1731A7		

Required additional data

LTP/FTP orthometric height	8.5
----------------------------	-----

CHANGE : New PROC.