

STANDARD DEPARTURE CHART -INSTRUMENT

RJOC / IZUMO

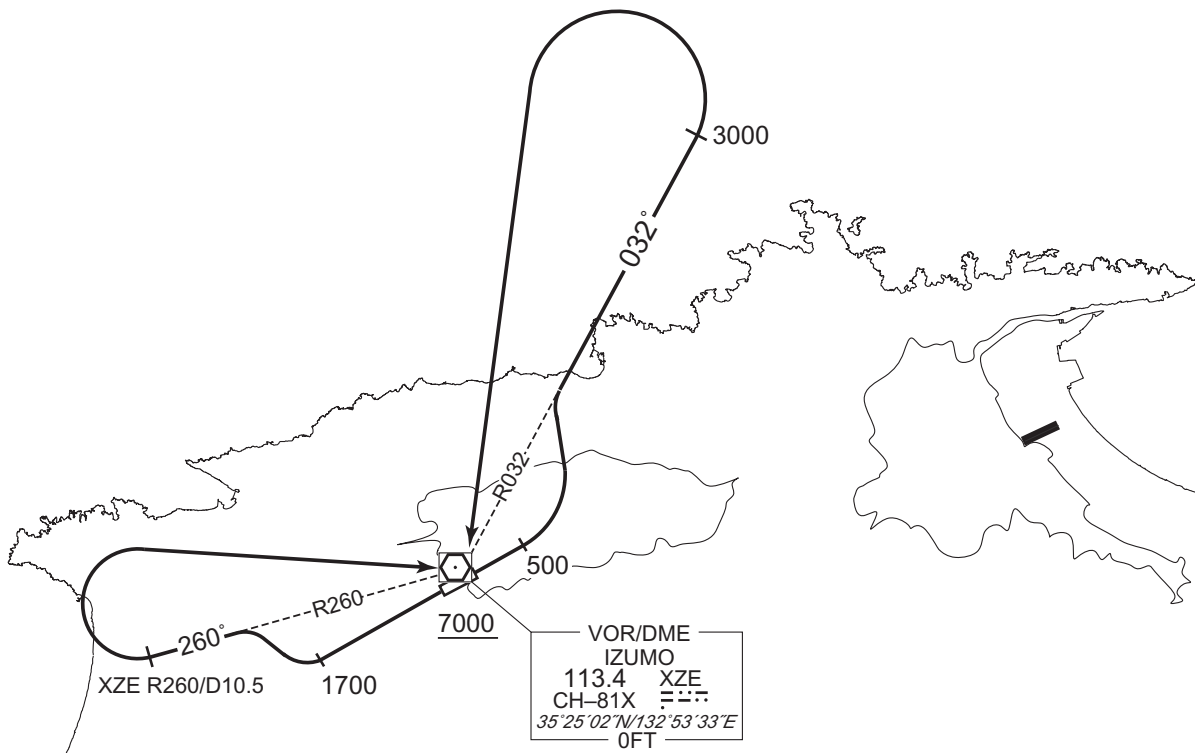
SID

IZUMO REVERSAL FOUR DEPARTURE

- RWY07 : Climb RWY HDG to 500FT, turn left to intercept and proceed via XZE R032 to 3000FT, turn left direct to XZE VOR/DME. Cross XZE VOR/DME at or above 7000FT.
- RWY25 : Climb RWY HDG to 1700FT, turn right to intercept and proceed via XZE R260 to XZE 10.5DME, turn right direct to XZE VOR/DME. Cross XZE VOR/DME at or above 7000FT.

Note RWY07: 4.6% climb gradient required up to 1300FT.  
 OBST ALT 1074FT located at 4.8NM 029° FM end of RWY07.

RWY25: 4.7% climb gradient required up to 2200FT.  
 OBST ALT 1838FT located at 6.3NM 280° FM end of RWY25.



45(39)	39(33)
A A	
A	
33(27)	

**RWY 07**

RWY25: See TAKE OFF MINIMA

CHANGE : Note.