

WAAS CH <b>63211</b> <b>W15A</b>	APP CRS <b>148°</b>	Rwy Idg TDZE Apt Elev	<b>5092</b> <b>623</b> <b>624</b>
--	------------------------	-----------------------------	---

# RNAV (GPS) RWY 15

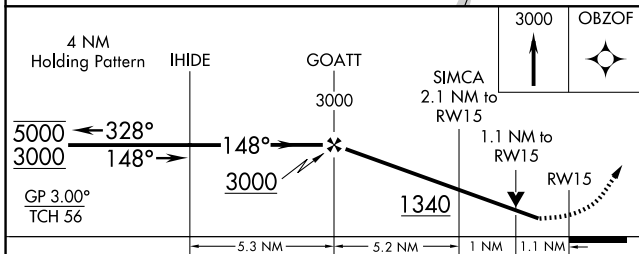
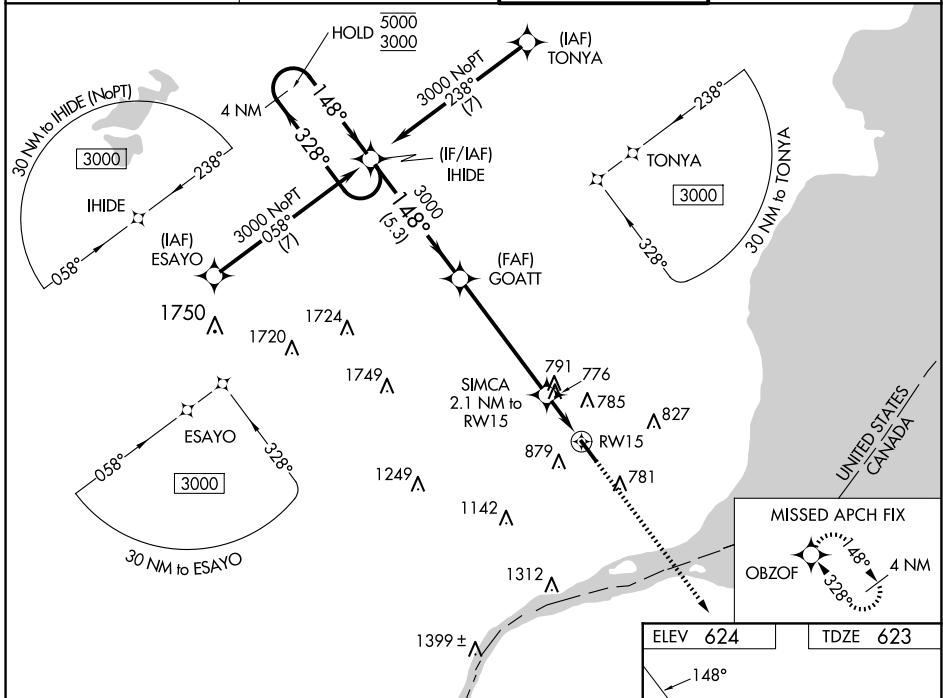
COLEMAN A YOUNG MUNI (DET)

RNP APCH - GPS.

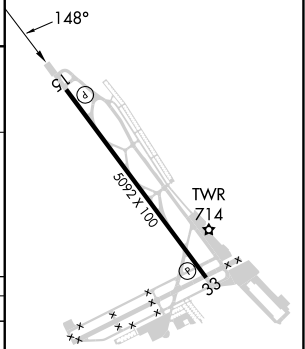
**⚠** Rwy 15 helicopter visibility reduction below  $\frac{3}{4}$  M NA. For uncompensated Baro-VNAV systems, LNAV/VNAV NA below -17°C or above 54°C. Baro-VNAV and VDP NA when using DTW altimeter setting.

MISSED APPROACH: Climb to 3000 direct OBZOF and hold.

ATIS <b>124.875</b>	DETROIT APP CON <b>134.3 284.0</b>	DETROIT CITY TOWER <b>121.3 257.8</b>	GND CON <b>121.85</b>
------------------------	---------------------------------------	--	--------------------------



ELEV 624	TDZE 623
----------	----------



CATEGORY	A	B	C	D
LPV DA		910- $\frac{7}{8}$	287 (300- $\frac{7}{8}$ )	
LNAV/VNAV DA		1016- $1\frac{1}{8}$	393 (400- $1\frac{1}{8}$ )	
LNAV MDA	1040-1	417 (500-1)	1040- $1\frac{1}{8}$	417 (500- $1\frac{1}{8}$ )
<b>C</b> CIRCLING	1180-1	556 (600-1)	1320-2 696 (700-2)	1500- $2\frac{3}{4}$ 876 (900- $2\frac{3}{4}$ )

MIRL Rwy 7-25  
HIRL Rwy 15-33  
REIL Rwy 15 and 33

EC-1, 20 MAR 2025 to 17 APR 2025

EC-1, 20 MAR 2025 to 17 APR 2025