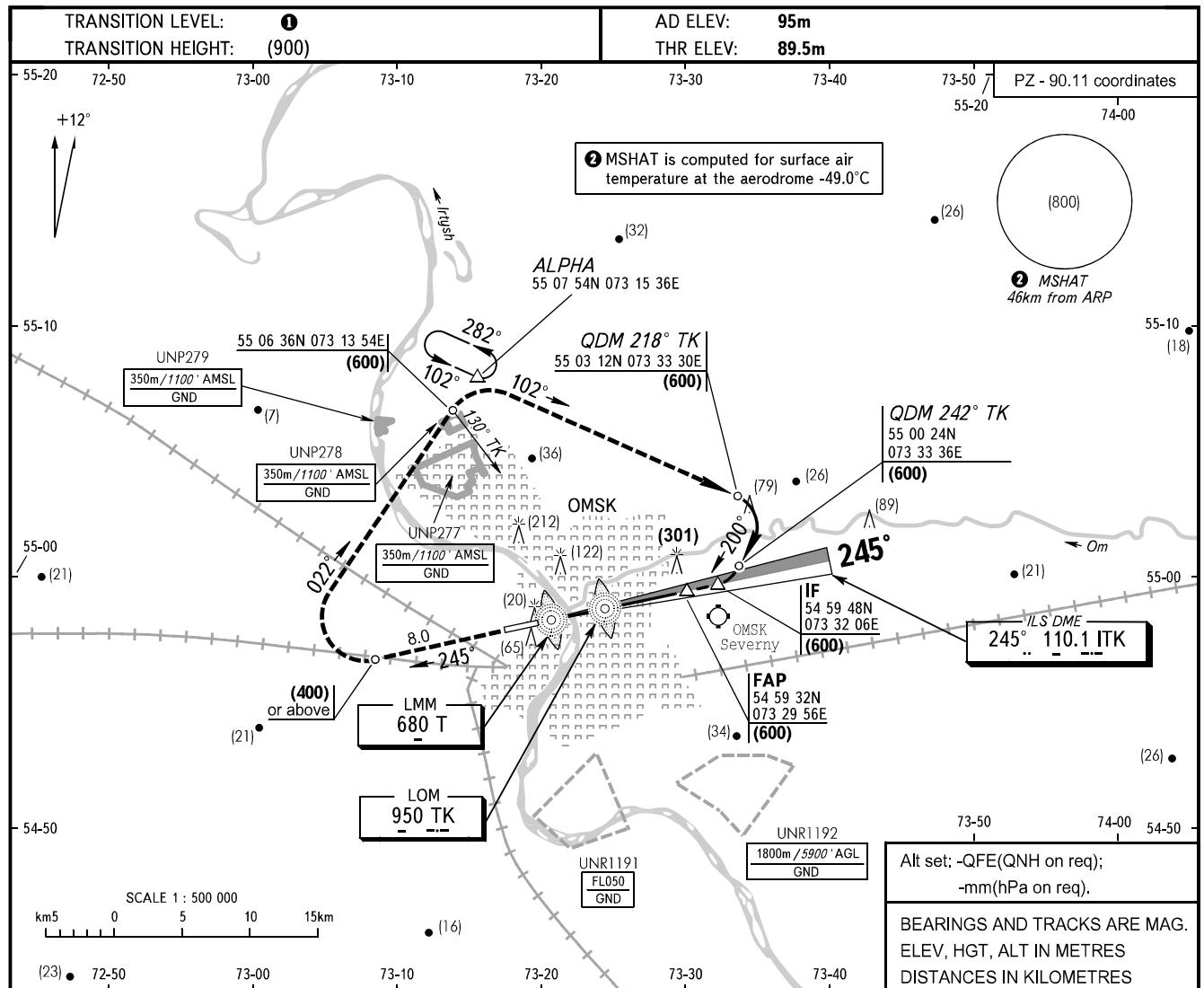


**INSTRUMENT  
APPROACH  
CHART - ICAO**

RADAR **119.000**  
START **119.000**

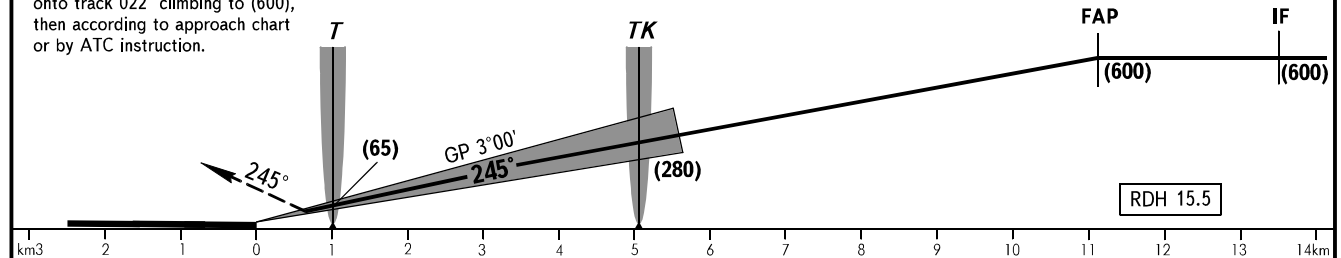
**OMSK, RUSSIA**  
TSENTRALNY  
ILS Y RWY 25



**MISSED APPROACH**

Climb straight ahead to (400) or above to DIST 8.0 from THR 07, turn RIGHT onto track 022° climbing to (600), then according to approach chart or by ATC instruction.

DIST to THR RWY 25	2.0	4.0	6.0	8.0	10.0
HEIGHT	(120)	(225)	(330)	(435)	(540)



OCA(H)		A	B	C	D					
Straight-in	CAT I	149 (59)	152 (62)	155 (65)	158 (68)					
	Approach									
Circling		245 (150)	305 (210)	425 (330)	425 (330)					
GROUND SPEED	km/h	150	180	210	240	270	300	330	360	390
RATE OF DESCENT	m/s	2.2	2.6	3.1	3.5	3.9	4.4	4.8	5.2	5.7

- ① **TRANSITION LEVEL:**
- FL050 when QFE is 733mm mercury column or above;
  - FL060 when QFE is less than 733mm mercury column.
- WARNING:**
1. The length of intermediate approach segment is less than normative.
  2. Turbulence with down-draughts may be experienced on final approach segment.
  3. Nesting and migration of birds are observed between LMM T and LOM TK in warm season.
  4. ILS DME ITK reads zero at THR RWY 25.