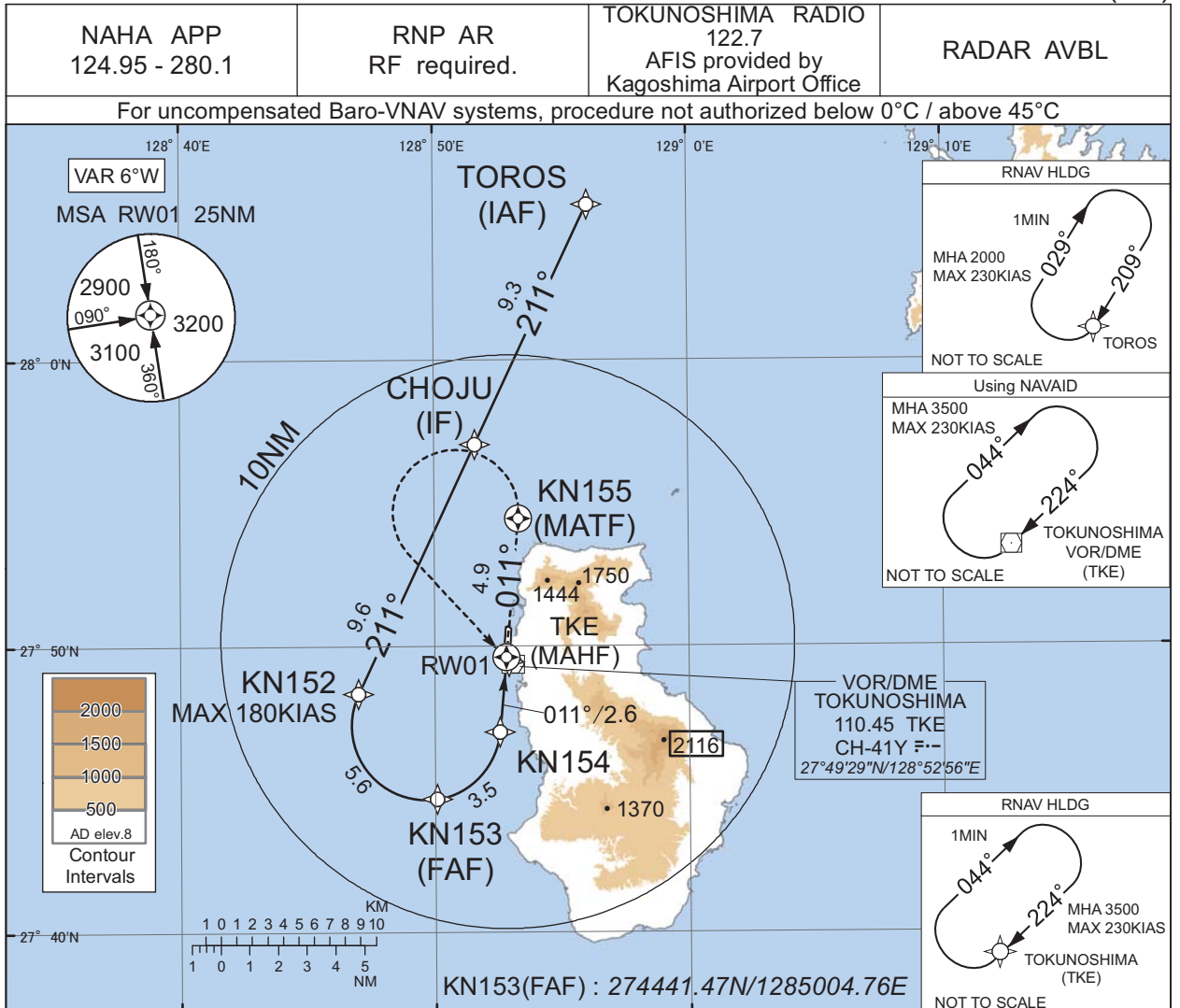


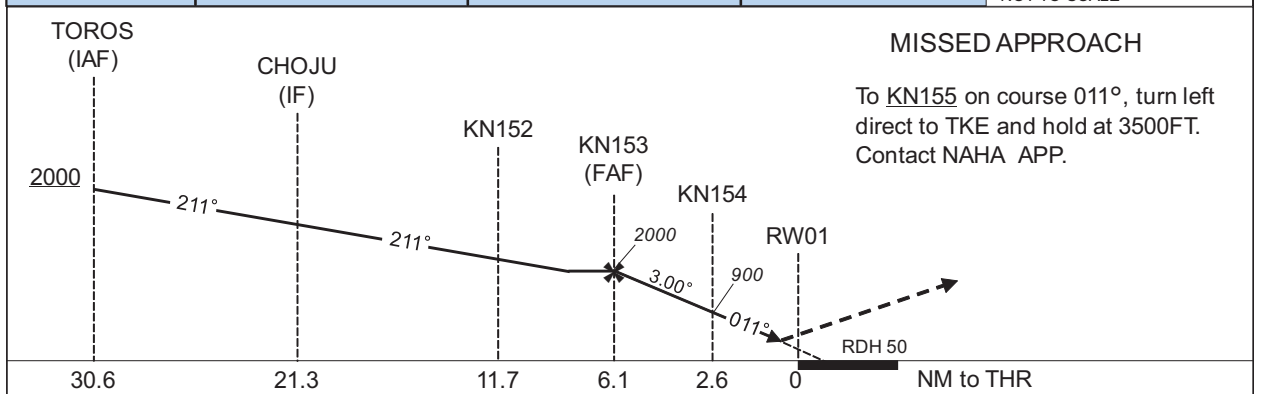
INSTRUMENT APPROACH CHART

RJKN / TOKUNOSHIMA

RNP Y RWY01(AR)



CHANGE : Description of RADAR Service. Missed APCH PROC.



Missed APCH climb gradient MNM 5.0%

CAT	RNP 0.30	
	DA(H)	CMV
A	-	-
B	-	-
C	656(639)	2000
D	-	-

Authorization Required

MINIMA with Missed APCH climb gradient of 2.5% are not established.

INSTRUMENT APPROACH CHART

RJKN / TOKUNOSHIMA

RNP Y RWY01(AR)

Coding Table

Serial Number	Path Descriptor	Waypoint Identifier	Fly Over	Course °M(°T)	Magnetic Variation	Distance (NM)	Turn Direction	Altitude (FT)	Speed (KIAS)	VPA/ RDH (°/FT)	RNP Value
001	IF	TOROS	-	-	-6.2	-	-	+2000	-	-	-
002	TF	CHOJU	-	211 (205.2)	-6.2	9.3	-	-	-	-	1.0
003	TF	KN152	-	211 (205.1)	-6.2	9.6	-	-	-180	-	1.0
004	RF Center: KNRF1 r=2.59NM	KN153	-	-	-6.2	5.6	L	2000	-	-	1.0
005	RF Center: KNRF1 r=2.59NM	KN154	-	-	-6.2	3.5	L	900	-	-3.00	0.3
006	TF	RW01	Y	011 (005.1)	-6.2	2.6	-	67	-	-3.00/50	0.3
007	CF	KN155	Y	011 (005.1)	-6.2	4.9	-	-	-	-	1.0
008	DF	TKE	-	-	-6.2	-	L	3500	-	-	1.0

Path	Waypoint Identifier	Inbound Course °M(°T)	Magnetic Variation	Outbound Time (MIN)	Turn Direction	Minimum Altitude (FT)	Maximum Altitude (FT)	Speed (KIAS)	RNP Value
Hold	TOROS	209 (203.3)	-6.2	1.0 (-14000)	R	2000	FL140	-230(-14000)	1.0
Hold	TKE	224 (217.8)	-6.2	1.0 (-14000)	R	3500	FL140	-230(-14000)	1.0

Waypoint Coordinates

Waypoint Identifier	Coordinates	RF Arc Center Identifier	Coordinates
TOROS	280527.68N / 1285604.41E	KNRF1	274715.75N / 1284938.87E
CHOJU	275704.94N / 1285137.19E		
KN152	274822.20N / 1284700.16E		
KN153	274441.47N / 1285004.76E		
KN154	274701.73N / 1285233.57E		
RW01	274938.71N / 1285249.54E		
KN155	275429.43N / 1285319.15E		
TKE	274929.20N / 1285255.98E		

CHANGE : New PROC.