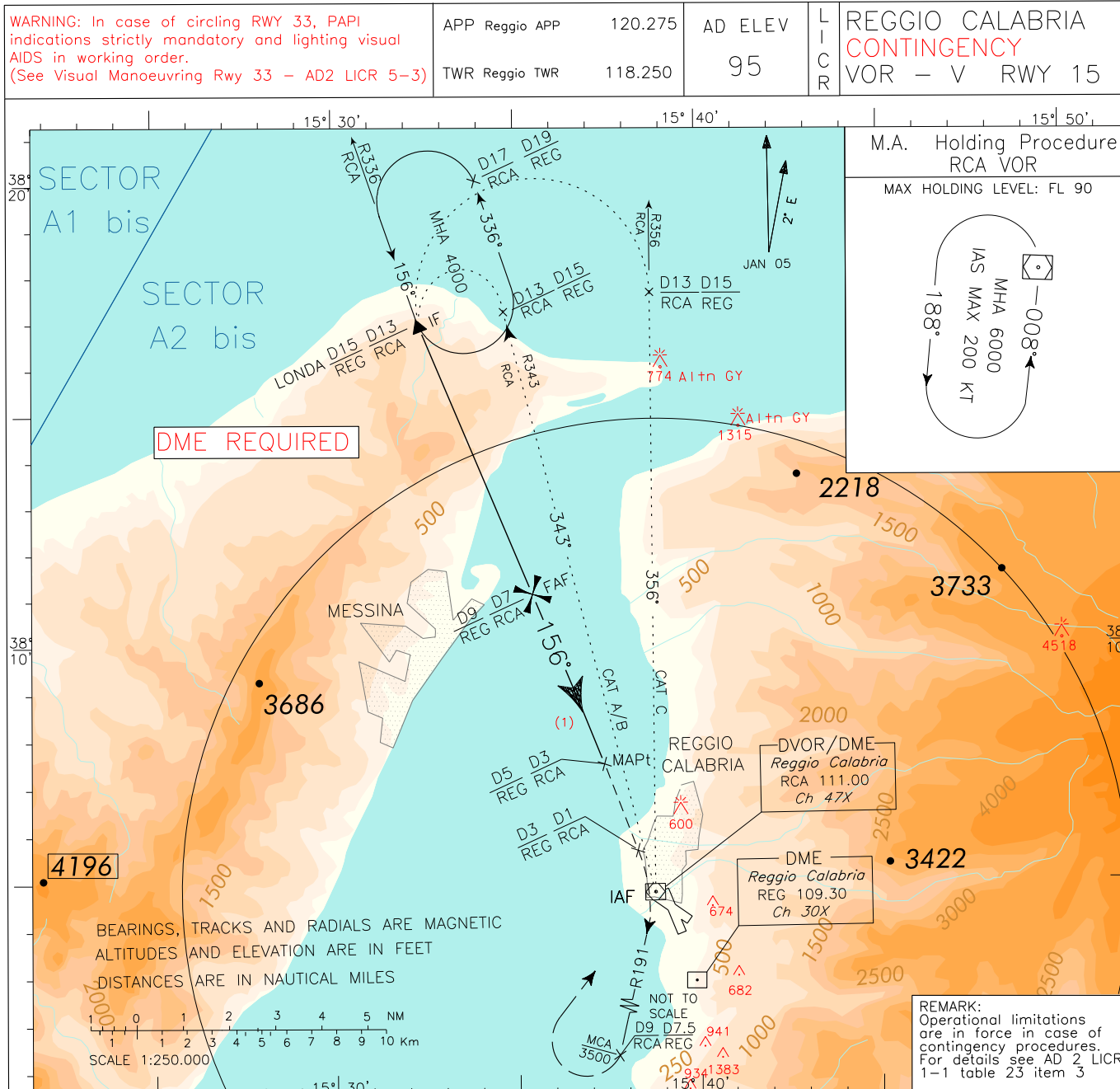


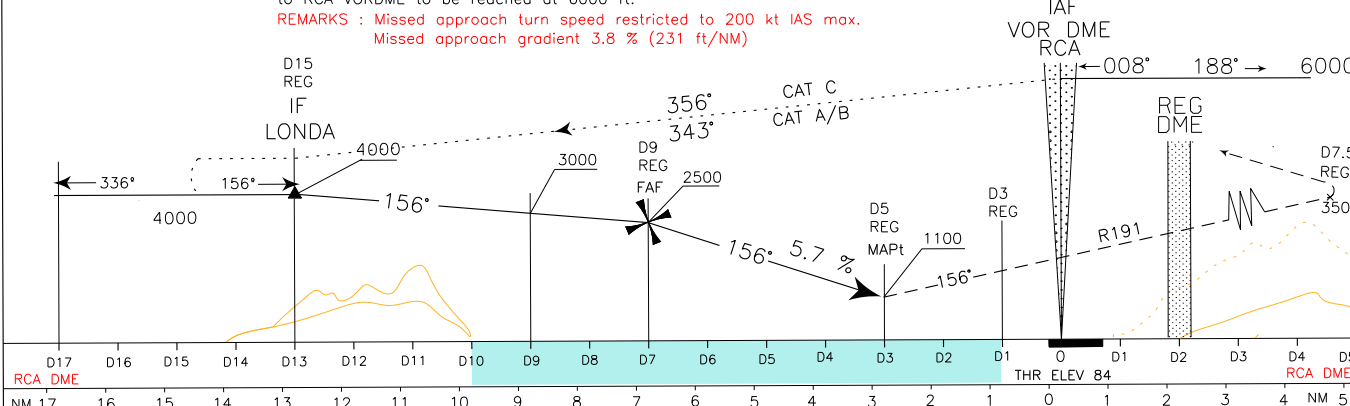
ICAO - INSTRUMENT APPROACH CHART

DOC.8168-ED.5-2006 AMDT 4

CHANGE: INITIAL APPROACH FROM RCA VOR ADDED. RCA NDB WITHDRAWN. RENUMBERED PAGE



TRANSITION ALT 7000  
MISSED APPROACH : Continue on track 156° until 1 NM RCA DME (or 3 NM REG DME) climbing to 6000 ft, then turn right to join RDL 191 RCA VOR. At 9 NM RCA DME (or 7.5 NM REG DME), to be reached at 3500 ft or above, turn right to RCA VORDME to be reached at 6000 ft.  
REMARKS : Missed approach turn speed restricted to 200 kt IAS max.  
Missed approach gradient 3.8 % (231 ft/NM)



LANDING MINIMA (see WARNING "1")		
CATEGORY	A - B - C	
OCA (OCH)	VIS	CEILING
1100 (1016)	5000 M	1500 FT
CIRCLING (see WARNING "2")	1500 (1405)	

REMARK 1: Final approach track offset 5.4° from runway centerline. Runway centerline intercepted 2018m from Threshold 15.  
WARNING 1: IFR operations allowed only with following MINIMA: VISIBILITY 1500m, CEILING 1500ft. Landing allowed only with minimum SLANT VISIBILITY 5000m.  
WARNING 2: Circling allowed West of the aerodrome only.

GS	FT/MIN	DIST	ALT (HGT)
80	460	6DME	2140 (2056)
100	580	5DME	1800 (1716)
120	690	4DME	1450 (1366)
140	810	3DME	1100 (1016)
160	920	2DME	760 (676)

