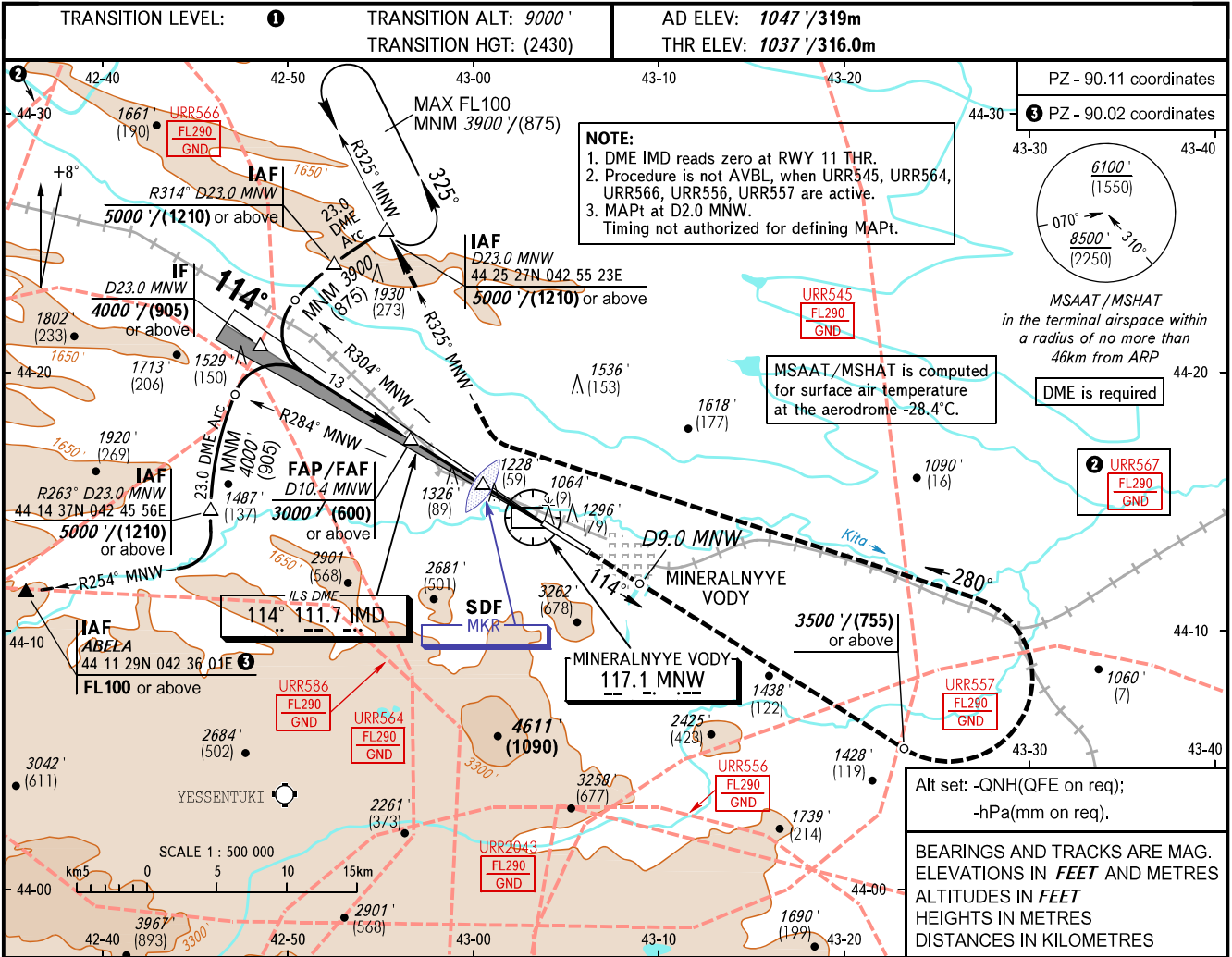


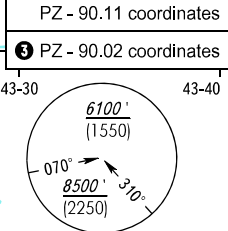
**INSTRUMENT
APPROACH
CHART - ICAO**

RADAR **120.700**
START **128.000**

MINERALNYYE VODY, RUSSIA
MINERALNYYE VODY
ILS Y CAT I/II, LOC Y RWY 11



NOTE:
1. DME IMD reads zero at RWY 11 THR.
2. Procedure is not AVBL, when URR545, URR564, URR566, URR556, URR557 are active.
3. MAPt at D2.0 MNW.
Timing not authorized for defining MAPt.

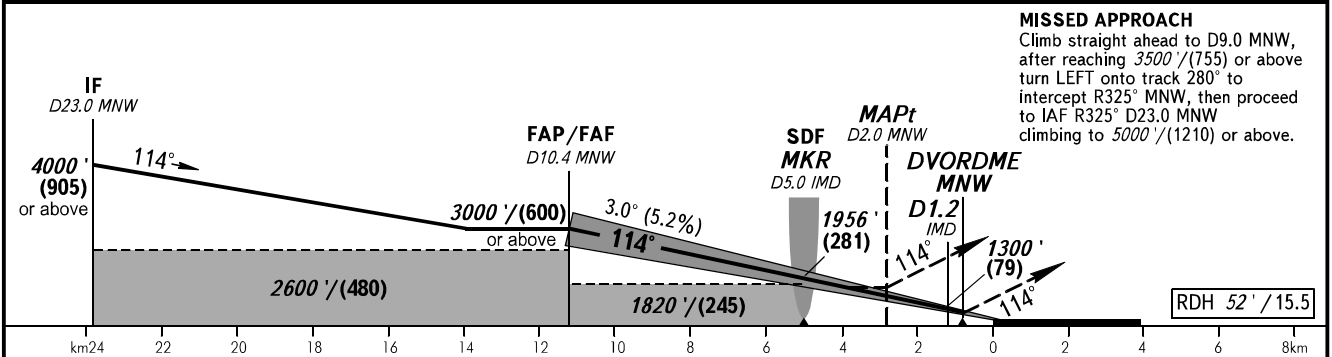


MSAAT / MSHAT is computed for surface air temperature at the aerodrome -28.4°C.

DME is required

Alt set: -QNH(QFE on req);
-hPa(mm on req).

BEARINGS AND TRACKS ARE MAG.
ELEVATIONS IN FEET AND METRES
ALTITUDES IN FEET
HEIGHTS IN METRES
DISTANCES IN KILOMETRES

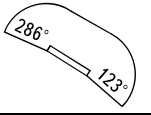


MISSED APPROACH
Climb straight ahead to D9.0 MNW, after reaching 3500'/(755) or above turn LEFT onto track 280° to intercept R325° D23.0 MNW, then proceed to IAF R325° D23.0 MNW climbing to 5000'/(1210) or above.

OCA(H)		A	B	C	D
Straight-in	CAT I	1194' (158') (49)	1206' (170') (52)	1214' (178') (55)	1225' (189') (58)
	CAT II	(69')/(22)	(86')/(27)	(98')/(30)	(112')/(35)
Approach	With SDF	1720' (690') (215)	1720' (690') (215)	1720' (690') (215)	1720' (690') (215)
	WO SDF	1820' (790') (245)	1820' (790') (245)	1820' (790') (245)	1820' (790') (245)
Circling		1890' (840') (260)	1890' (840') (260)	2180' (1140') (350)	2320' (1280') (395)

1 TRANSITION LEVEL:
- FL100 when QNH is 1013 hPa (760mm mercury column) or above;
- FL110 when QNH is 977 hPa (733mm mercury column) or above, but less than 1013 hPa (760mm mercury column);
- FL120 when QNH is less than 977 hPa (733mm mercury column).

Visual manoeuvring south of the AD is PROHIBITED.



GROUND SPEED	km/h	150	180	210	240	270	300	330	360
	kt	81	97	113	130	146	162	178	194
RATE OF DESCENT	m/s	2.2	2.6	3.0	3.5	3.9	4.3	4.8	5.2
	ft/min	427	512	597	682	768	853	938	1024

CHANGE: New chart