

STANDARD DEPARTURE CHART - INSTRUMENT

RJFR / KITAKYUSHU

SID

ONGHA TWO DEPARTURE

RWY 18 : Climb RWY HDG to 500FT, turn left,...

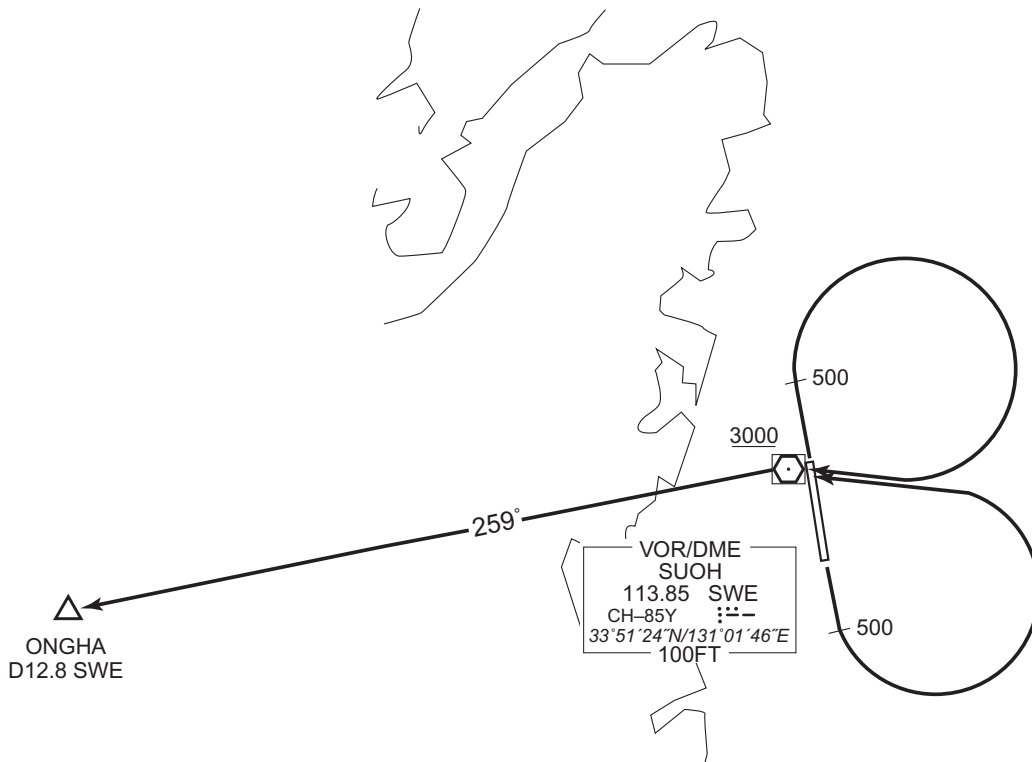
RWY 36 : Climb RWY HDG to 500FT, turn right,...

...direct to SWE VOR/DME, proceed via SWE R259 to ONGHA.

Cross SWE VOR/DME at or above 3000FT.

Note RWY18 : 5.8% climb gradient required up to 500FT due to airspace restrictions only.

RWY36 : 4.0% climb gradient required up to 500FT due to airspace restrictions only.



CHANGE : Description of PROC name.