

**PANS-OPS
INSTRUMENT APPROACH CHART**

AD ELEV 1536

**RNP RWY 25
NIEDERSTETTEN (ETHN)**

LANGEN RADAR 314.950 135.725		STETTEN RADAR 269.250 127.190		STETTEN TOWER 134.205 356.675 122.100		
APP COURSE 251°	FAF ALT 3000	DESCENT GR 3.4° / 5.9%	MDA / DA See CAT	THR ELEV 1535	ALS-LENGTH 600 M	LDA 3969

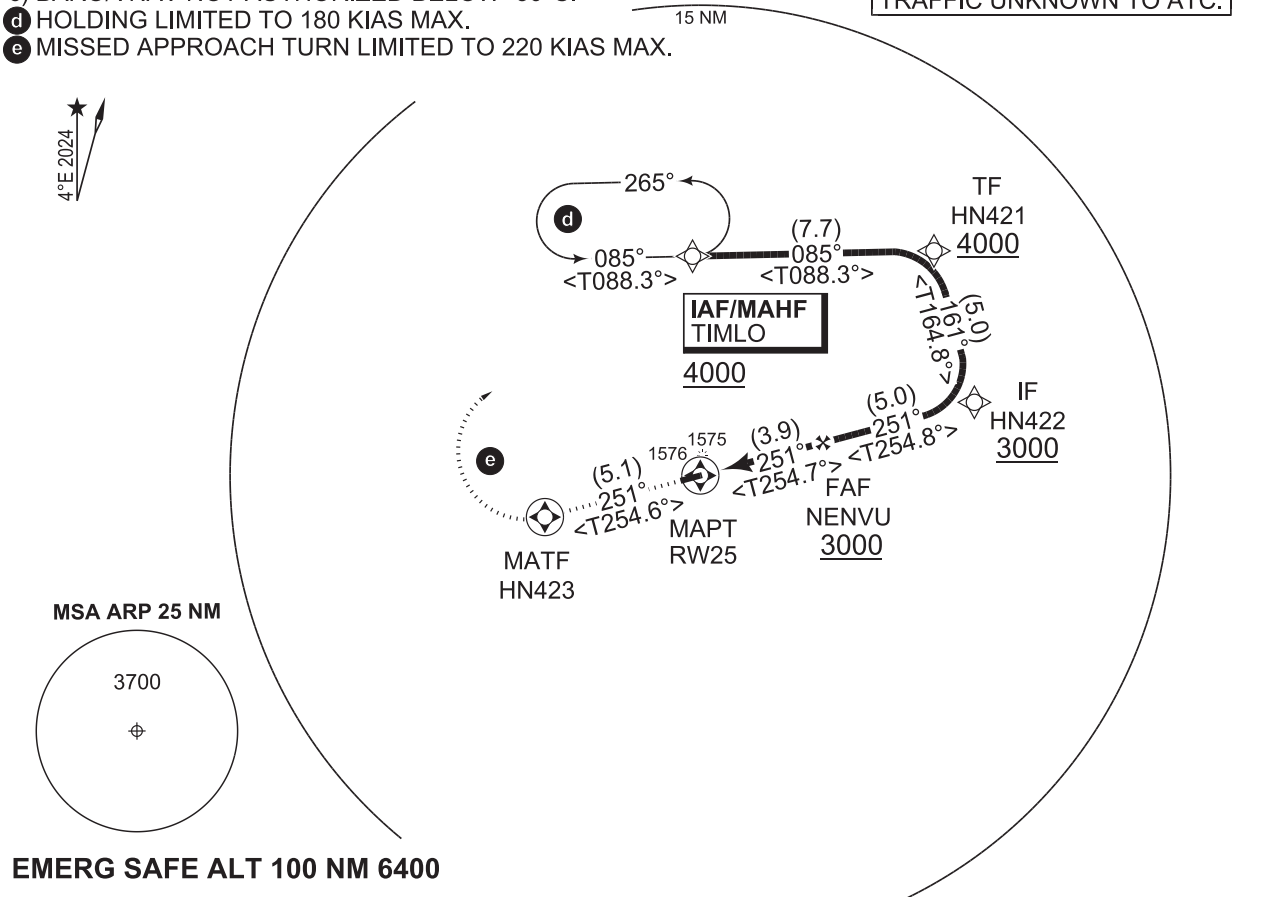
CAUTION:

a) ABOVE 20°C THE VPA IS AT OR ABOVE 3.5° / 6.1%.

NOTE:

- b) NAVIGATION SENSOR: GNSS ONLY.
- c) BARO/VNAV NOT AUTHORIZED BELOW -30°C.
- d) HOLDING LIMITED TO 180 KIAS MAX.
- e) MISSED APPROACH TURN LIMITED TO 220 KIAS MAX.

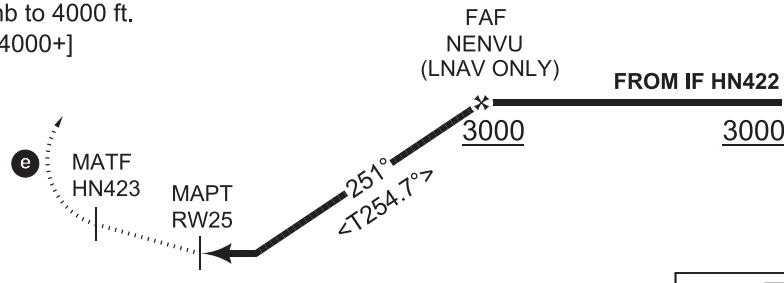
IFR PROFILES WITHIN
AIRSPACE CLASS "E"
WATCH OUT FOR VFR
TRAFFIC UNKNOWN TO ATC.



MISSED APPROACH

TA 5000

Climb on course 251° to HN423,
turn right direct to TIMLO, climb to 4000 ft.
HN423 [M252, R] → TIMLO [A4000+]



Dist THR	1	2	3	4
Altitude	1930	2280	2630	3000

TCH 50

THR ELEV 1535

3.9

CAT I

CATEGORY	A		B		C		D		
	MIN	MAX	MIN	MAX	MIN	MAX	MIN	MAX	
LNAV	1930	1.1 395	400	1.1/1.5	1930	1.1 395	400	1.1/1.8	NOT AUTHORIZED
LNAV / VNAV	1807	0.8 600 272	1820	0.8 650 285	1843	0.8 700 308	1860	0.8 750 330	NOT AUTHORIZED
		(300-0.8/1.3)		(300-0.8/1.4)		(400-0.8/1.4)		(400-0.8/1.4)	
CIRCLING	1980	2.1 444	2030	2.3 494	2130	2.7 594	2230	3.0 694	NOT AUTHORIZED
		(500-2.1)		(500-2.3)		(600-2.7)		(600-2.7)	

RNP RWY 25

49°23.51'N
009°57.49'E

NIEDERSTETTEN (ETHN)

CHANGE: CIRCLING MINIMA (234/24)

ZentrLuftOp 28 NOV 2024