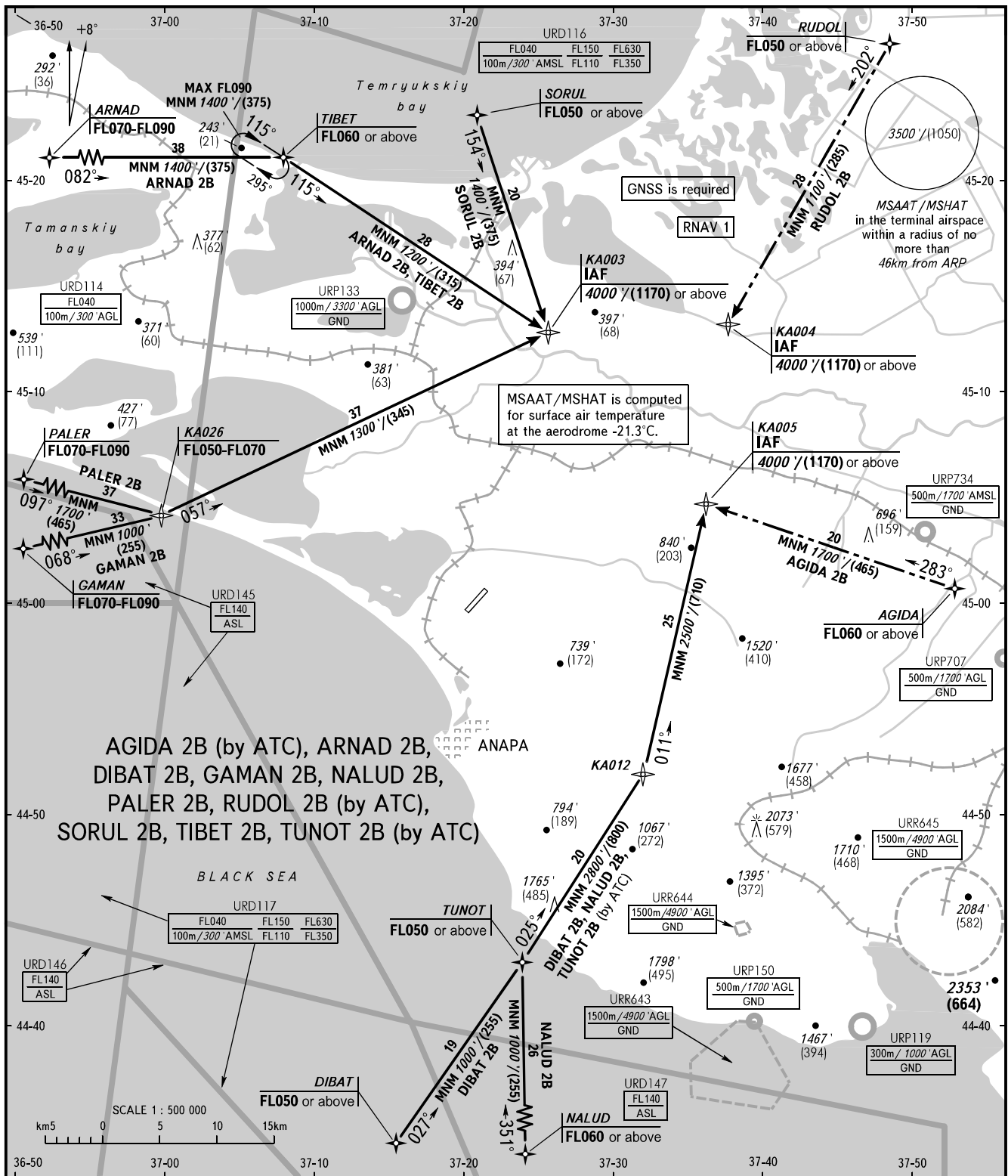


STANDARD ARRIVAL CHART
INSTRUMENT (STAR) - ICAO

ANAPA, RUSSIA
VITYAZEVO
RNAV RWY 21

TRANSITION
LEVEL: 1



AGIDA 2B (by ATC), ARNAD 2B,
DIBAT 2B, GAMAN 2B, NALUD 2B,
PALER 2B, RUDOL 2B (by ATC),
SORUL 2B, TIBET 2B, TUNOT 2B (by ATC)

ANAPA RADAR 118.700
ANAPA TOWER 119.800

BEARINGS AND TRACKS ARE MAGNETIC
ALTITUDES IN FEET
HEIGHTS IN METRES
ELEVATIONS IN FEET AND METRES
DISTANCES IN KILOMETRES

Alt set: -QNH(QFE on req);
-hPa(mm on req).

1 TRANSITION LEVEL:
- FL050 when QNH is 1013 hPa (760mm mercury column) or above;
- FL060 when QNH is 977 hPa (733mm mercury column) or above,
but less than 1013 hPa (760mm mercury column);
- FL070 when QNH is less than 977 hPa (733mm mercury column).