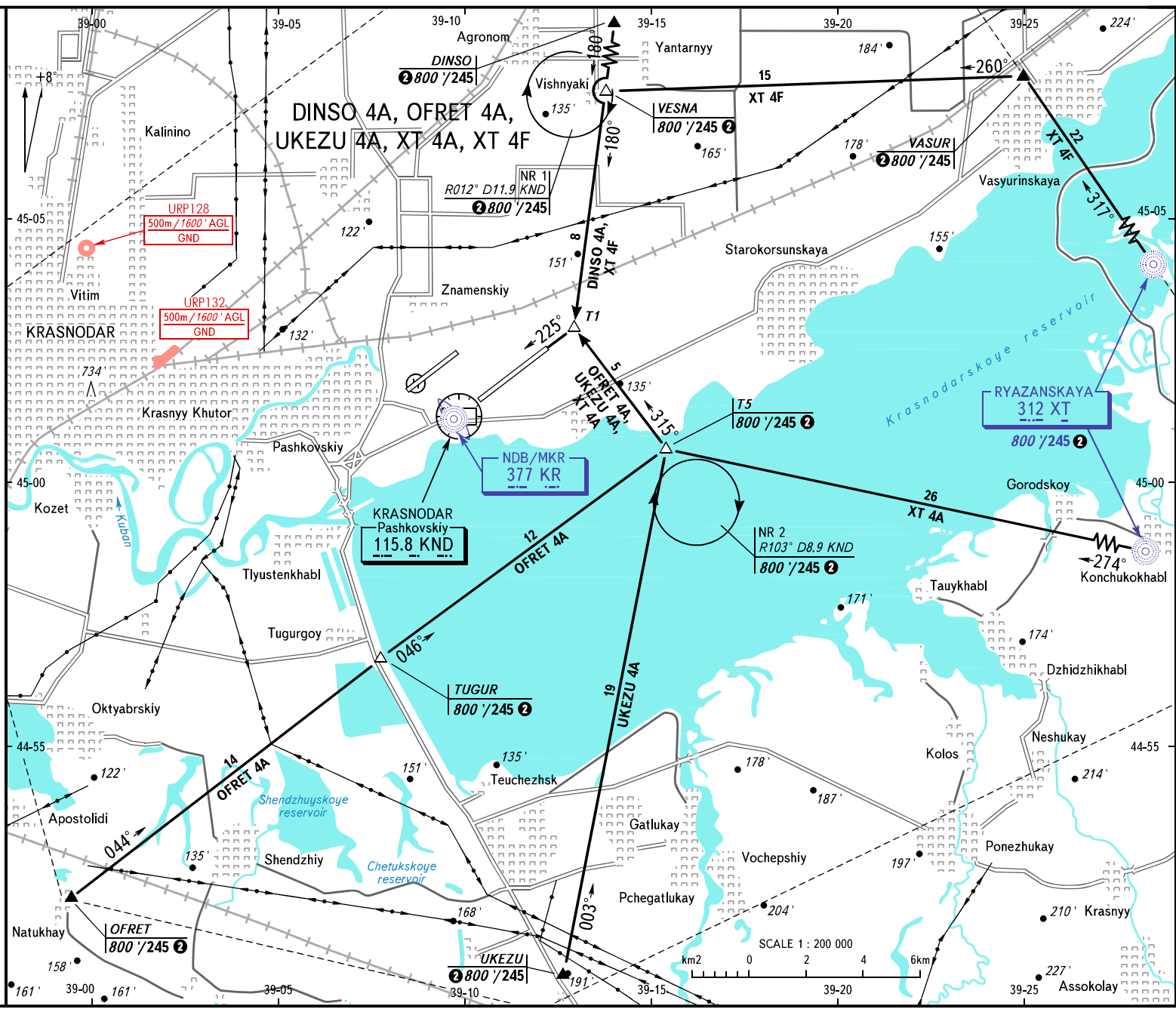


VFR  
ARRIVAL  
CHART

TRANSITION  
LEVEL: **1**

**KRASNODAR, RUSSIA**  
PASHKOVSKIY  
RWY 23L



**1** TRANSITION LEVEL:  
- FLO60 when QNH is 977 hPa (733mm mercury column) or above;  
- FLO70 when QNH is 941 hPa (706mm mercury column) or above,  
but less than 977 hPa (733mm mercury column).  
**2** 1000 / 305 at NGT

BEARINGS AND TRACKS ARE MAGNETIC  
ALTITUDES AND ELEVATIONS IN FEET  
DISTANCES IN KILOWMETRES

Alt set: -QNH(QFE on req.);  
-hPa(mm on req.).