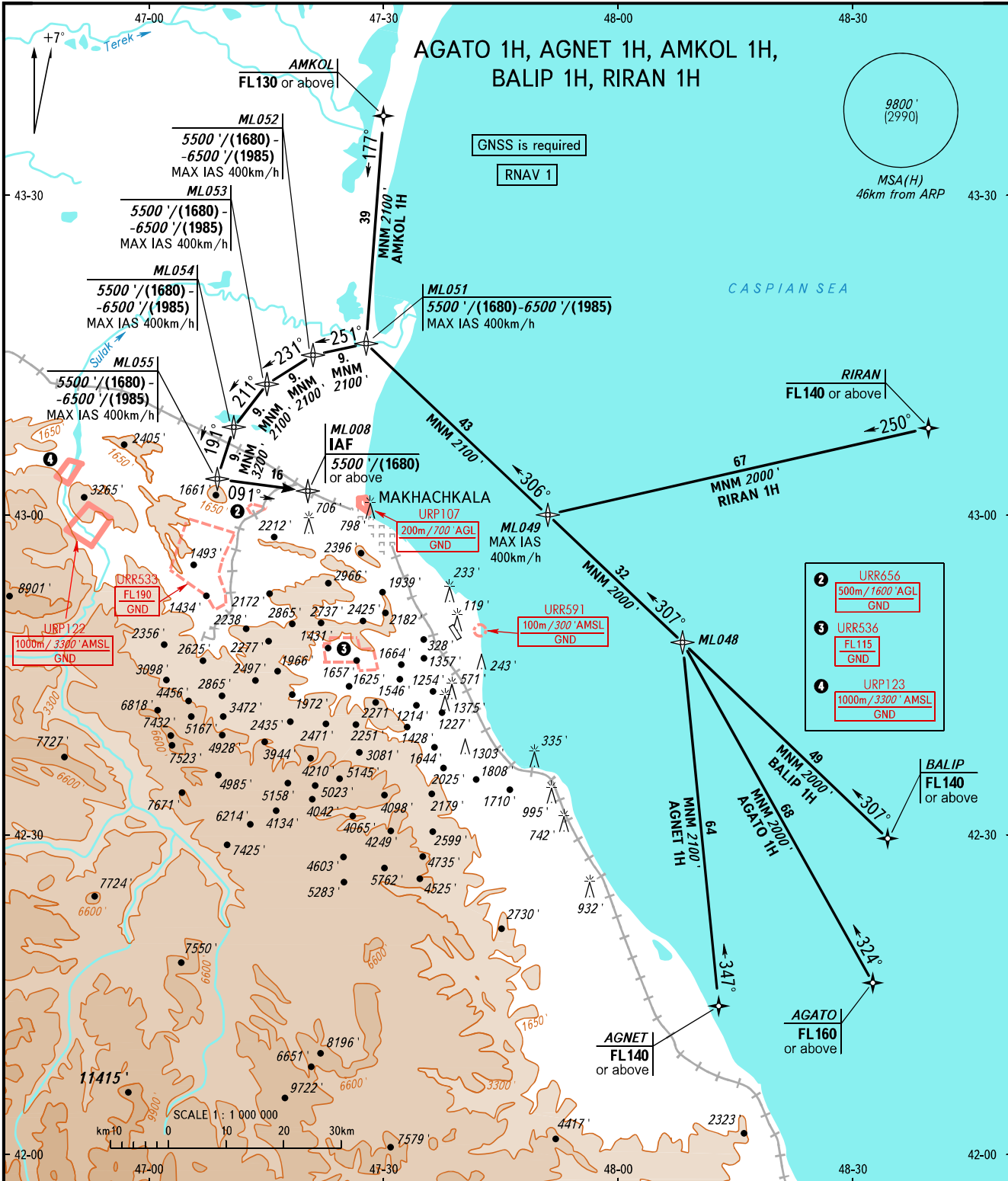


STANDARD ARRIVAL CHART  
INSTRUMENT (STAR) - ICAO

TRANSITION  
LEVEL : ①

MAKHACHKALA, RUSSIA  
UYTASH  
RNAV RWY 14



APPROACH 119.700  
RADAR 121.300  
START 121.300

- ① TRANSITION LEVEL:
- FL110 when QNH is 1013 hPa (760mm mercury column) or above;
  - FL120 when QNH is 977 hPa (733mm mercury column) or above, but less than 1013 hPa (760mm mercury column);
  - FL130 when QNH is less than 977 hPa (733mm mercury column).

BEARINGS AND TRACKS ARE MAGNETIC  
ALTITUDES AND ELEVATIONS IN FEET  
HEIGHTS IN METRES  
DISTANCES IN KILOMETRES

Alt set: -QNH(QFE on req);  
-hPa(mm on req).

CHANGE: New chart