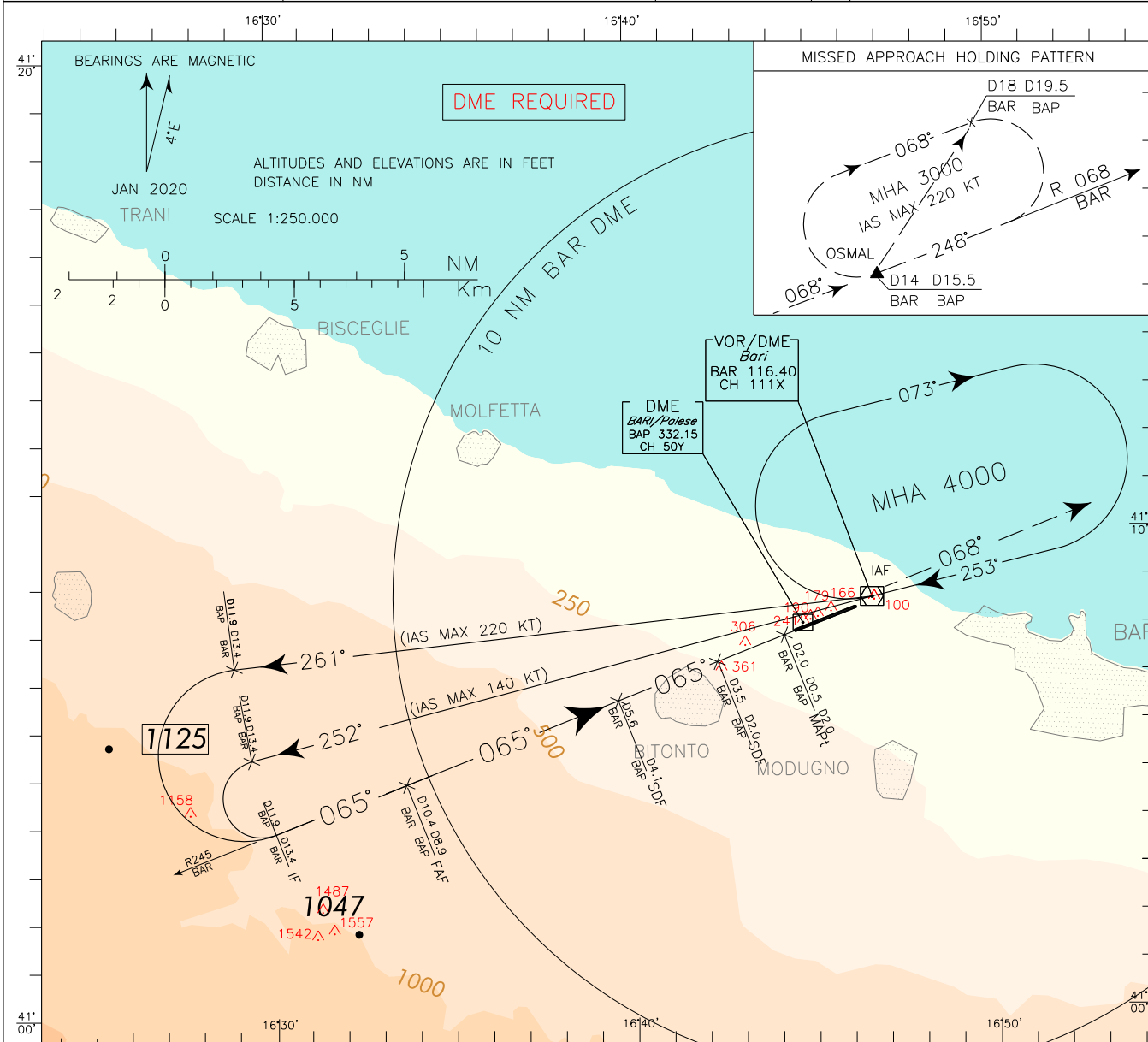


ICAO - INSTRUMENT APPROACH CHART

DOC 8168 ED 6 - 2014 AMDT 8

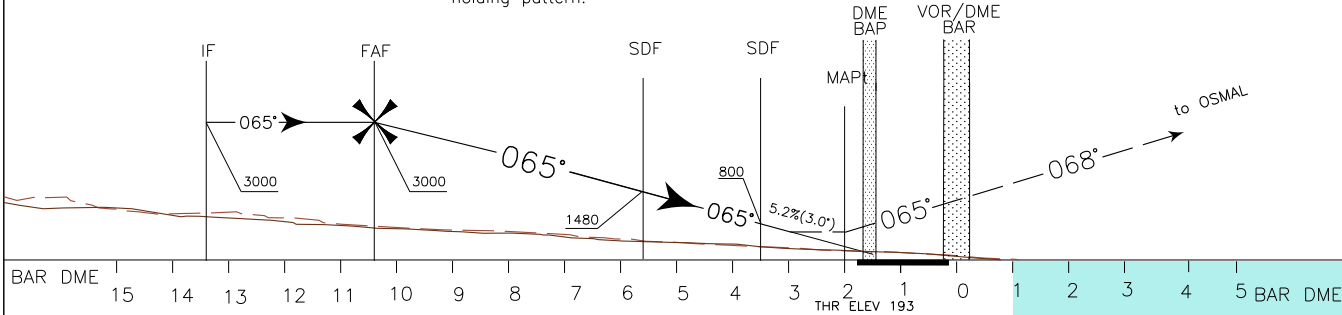
CHANGE: REVISED and RENUMBERED CHART

| | | | | |
|--|--|-------------|------|------------------------------|
| REMARK: Final approach track does not intersect the extended centre line (ECL). Distance between final approach track and extended centre line at 1400 mt before threshold is 107 mt north of ECL. | APP Brindisi Radar 118.750 (133.025) | AD ELEV 193 | LIBD | BARI/ PALESE VOR Y RWY 07 |
| | TWR Bari TWR 118.300 | | | |
| | ATIS Bari ATIS Arrival and Departure Information 124.050 | | | |



TRANSITION ALT 5000

MISSED APPROACH: At 2 NM BAR DME (or 0.5 NM BAP DME) climb to 3000 ft and continue on TR 065° (RDL 245 BAR VOR). Over BAR VOR proceed on TR 068° (RDL 068 BAR VOR) bound to OSMAL holding pattern.



| | | | | | | | | | | | |
|----------------------|--------------------------------|-----------|----------|----------|-----------|--|------------|----|------------|------------|-------------------------|
| OCA (OCH) | | A | B | C | D | CIRCLING SECTOR (*) REMARK: IAS MAX 195 KT | FT PER MIN | GS | BAR DME | ALT (HGT) | MNM SECT ALT BAR VOR |
| STRAIGHT IN APPROACH | VOR/DME | 620 (427) | | | | | 425 | 80 | 7 | 1910(1717) | |
| | CIRCLING (*) NORTH OF RWY ONLY | | 850(657) | 950(757) | 1090(897) | 637 | 100 | 6 | 1590(1397) | | |
| | | | | | | 743 | 140 | 4 | 950(757) | | |
| | | | | | | 849 | 160 | 3 | 630(437) | | |

