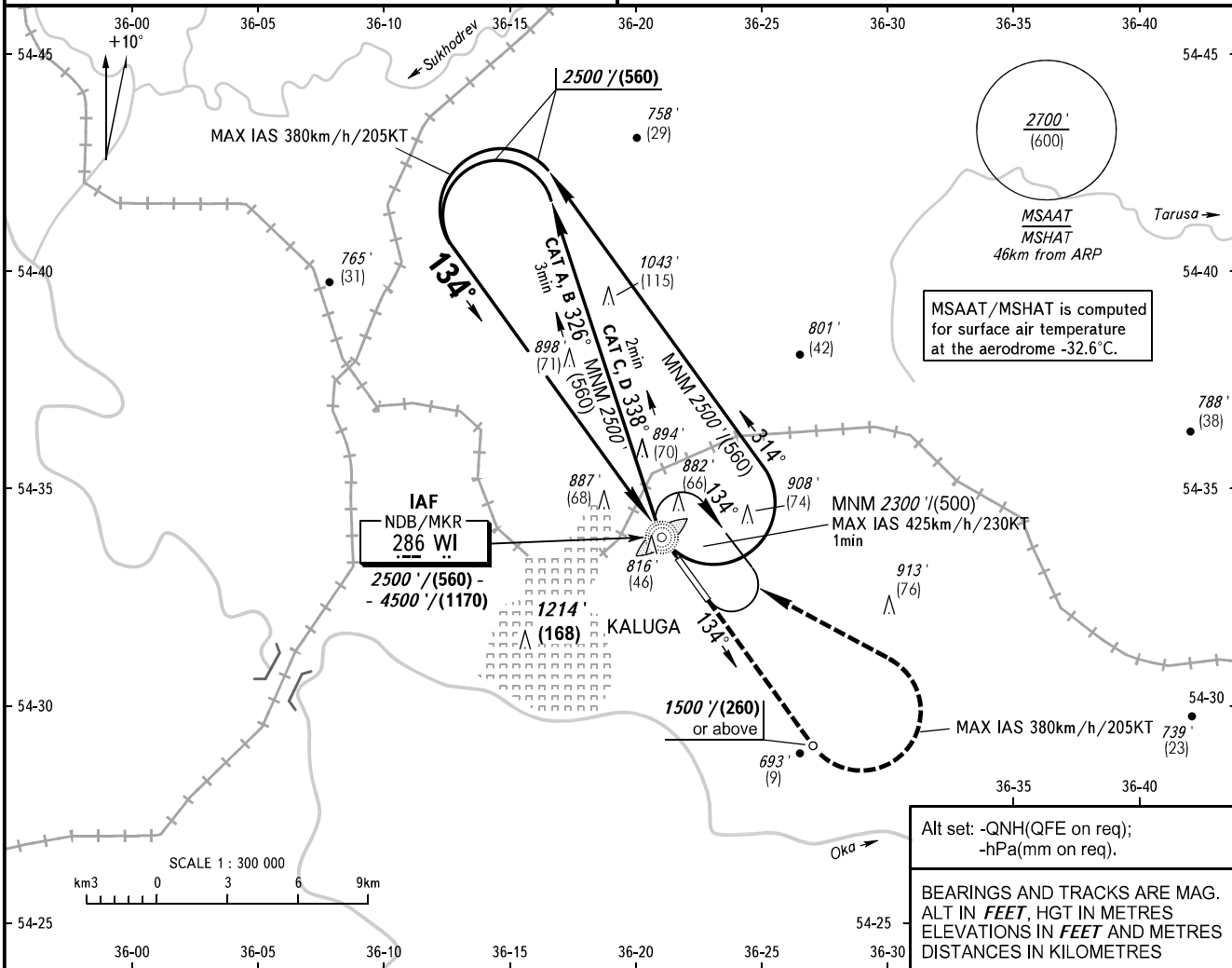


**INSTRUMENT  
APPROACH  
CHART - ICAO**

KALUGA TOWER 120.300

**KALUGA, RUSSIA**  
GRABTSEVO  
NDB Y RWY 13

TRANSITION LEVEL: **1**      TRANSITION ALT: 5000'      AD ELEV: 666'/203m  
TRANSITION HGT: (1320)      THR ELEV: 666'/203.0m

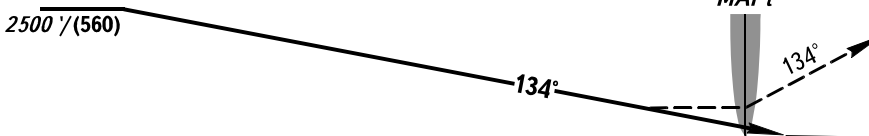


MSAAT/MSHAT is computed for surface air temperature at the aerodrome -32.6°C.

Alt set: -QNH(QFE on req);  
-hPa(mm on req).

BEARINGS AND TRACKS ARE MAG.  
ALT IN FEET, HGT IN METRES  
ELEVATIONS IN FEET AND METRES  
DISTANCES IN KILOMETRES

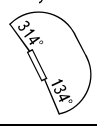
**MISSED APPROACH**  
Climb on track 134° to 1500'/(260) or above (MAX IAS 380km/h/205KT), turn LEFT to NDB/MKR WI climbing to 2500'/(560) or above, then proceed according to chart or as instructed by ATS unit.



OCA(H)		A	B	C	D
Straight-in Approach		1200' (530') (170)	1200' (530') (170)	1200' (530') (170)	1200' (530') (170)
Circling		1200' (530') (170)	1210' (550') (170)	1310' (650') (200)	1360' (700') (220)

**1** TRANSITION LEVEL:  
- FL060 when QNH is 1013 hPa (760mm mercury column) or above;  
- FL070 when QNH is 977 hPa (733mm mercury column) or above, but less than 1013 hPa (760mm mercury column);  
- FL080 when QNH is less than 977 hPa (733mm mercury column).

**WARNING:**  
1. Visual manoeuvring west of AD is PROHIBITED.  
2. MAPt at NDB/MKR WI. Timing not authorized for defining MAPt.



CHANGE: New chart