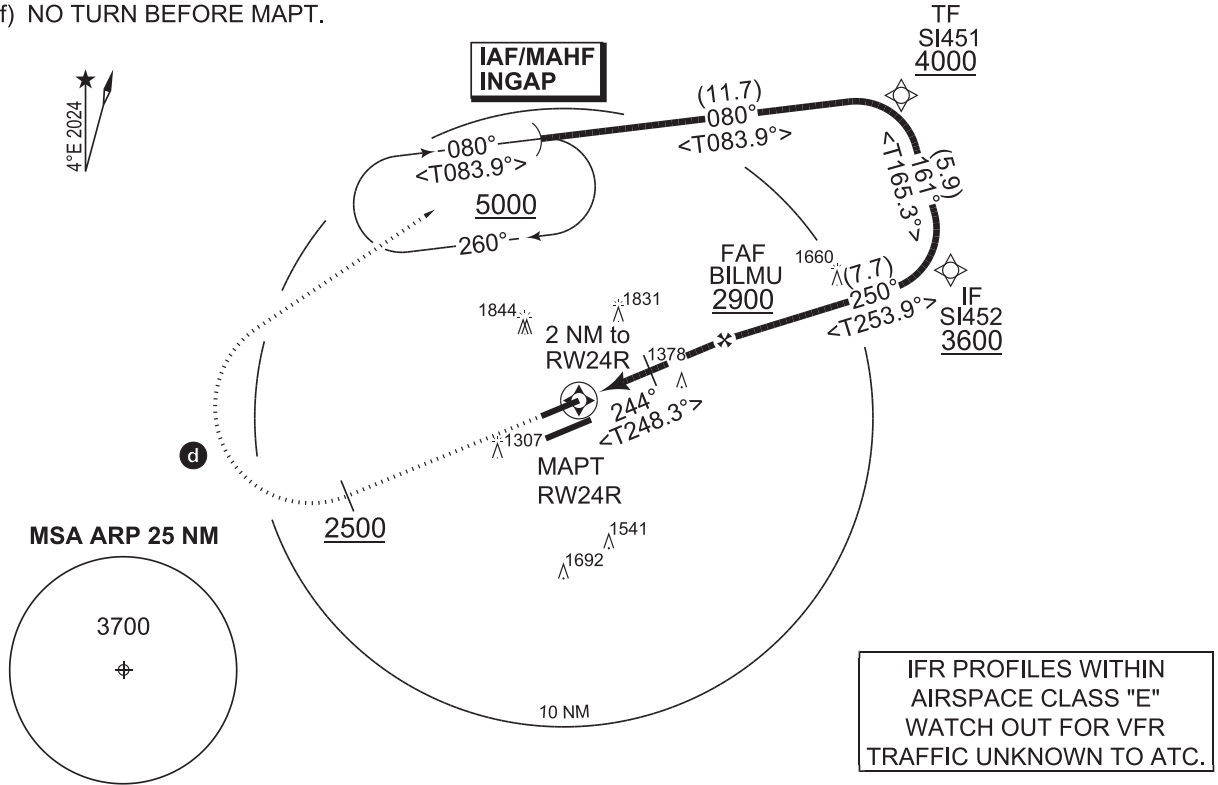


PANS-OPS INSTRUMENT APPROACH CHART **RNAV (GNSS) RWY 24R**
INGOLSTADT/MANCHING (ETSI)

MUENCHEN RADAR 242.200	INGO RADAR 282.000 120.605 125.580	INGO TOWER 376.800 125.255	INGO ATIS 118.865
APP COURSE 244°	FAF ALT 2900	GS 3.1°	MDA See CAT
		TDZE 1192	ALS-LENGTH 900 M
			LDA 8001

NOTE:

- a** MISSED APCH: CLIMB WITH MINIMUM 3% (183 FT/NM) FOR ATC REASON.
- b** CIRCLING NOT AUTHORIZED NORTH OF RWY 06L/24R.
- c** CAT B: CIRCLING SPEED LIMITED TO 130 KIAS MAX.
- d** MISSED APCH TURN LIMITED TO 250 KIAS.
- e) GPS QUALIFICATION REQUIRED.
- f) NO TURN BEFORE MAPT.



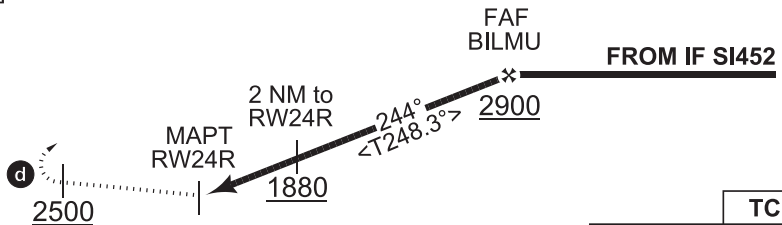
EMERG SAFE ALT 100 NM 13500

MISSED APPROACH **a**

Climb on track 244°, when passing 2500 ft turn right direct **INGAP**. Climb to 5000 ft and enter holding.
 [M244, A2500+; R] - **INGAP** [A5000+]

TA 5000

Distance THR	5	4	3	2	1
Altitude	2870	2540	2210	1880	1550



TDZE 1192	5.1	CAT I	TCH 50
-----------	-----	-------	---------------

CATEGORY	A	B	C	D	E
GNSS 24R	1590 - 1.2 398 (400-1.2/1.5)		1590 - 1.2 398 (400-1.2/1.8)	1610 - 1.2 418 (500-1.2/1.9)	1650 - 1.4 458 (500-1.4/2.1)
b CIRCLING	1700 - 2.3 497 (500-2.3)	c 1710 - 2.4 507 (600-2.4)	2480 - 5.0 1277 (1300-5.0)	2630 - 5.0 1427 (1500-5.0)	

CHANGE: VAR (423/23)

RNAV (GNSS) RWY 24R **INGOLSTADT/MANCHING (ETSI)**

48°42.94'N
011°32.02'E