

VORTAC ACT 115.3 Chan 100	APP CRS 321°	Rwy Idg TDZE Apt Elev	5103 516 516
--	------------------------	-----------------------------	---

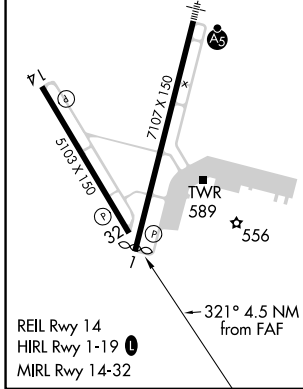
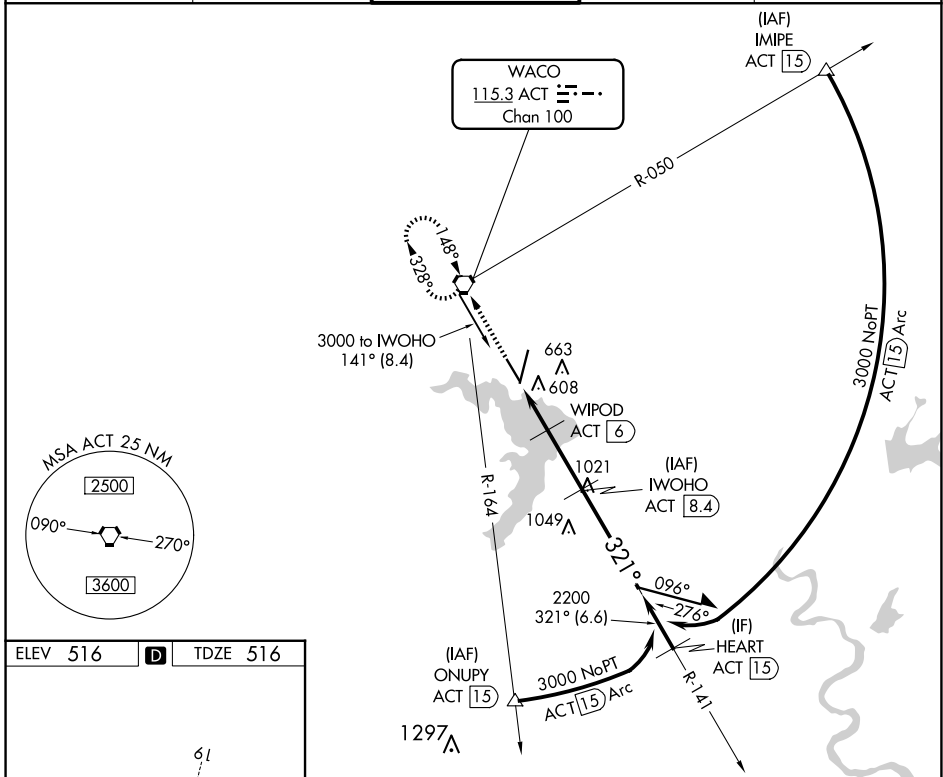
VOR/DME RWY 32

WACO RGNL (ACT)

ASR VDP NA with Mc Gregor Exec altimeter setting. When local altimeter setting not received use Mc Gregor Exec altimeter setting and increase all MDA 40 feet; increase S-32 Cats C/D visibility 1/8 mile and Circling Cat D visibility 1/4 mile.

MISSED APPROACH: Climb to 3000 direct ACT VORTAC and hold, continue climb-in-hold to 3000.

ATIS 123.85	WACO APP CON * 127.65 227.125	WACO TOWER * 119.3 (CTAF) 0 257.8	GND CON 121.9	UNICOM 122.95
-----------------------	---	---	-------------------------	-------------------------



3000 ACT	WACO ACT 115.3 Chan 100	WIPOD ACT 6	IWOHO ACT 8.4	IMIPE ACT 15	HEART ACT 15	ONUPY ACT 15	3000 NoPT ACT 15	2200 ACT 321° (6.6)	1300 ACT 321° (4.9)	1297 ACT
↑	ACT	ACT	ACT	ACT	ACT	ACT	ACT	ACT	ACT	ACT
3000	3000	2200	1300	1297	1297	1297	1297	1297	1297	1297
↑	ACT	ACT	ACT	ACT	ACT	ACT	ACT	ACT	ACT	ACT
0.9	1.1	2.4	4.5	6.6	8.4	10.0	15.0	15.0	15.0	15.0
0.9	1.1	2.4	4.5	6.6	8.4	10.0	15.0	15.0	15.0	15.0
CATEGORY	A	B	C	D						
S-32	860-1 344 (400-1)									
CIRCLING	940-1 424 (500-1)	980-1 464 (500-1)	1020-1½ 504 (600-1½)	1160-2 644 (700-2)						

Remain within 10 NM

VGSI and descent angles not coincident (VGSI Angle 3.00/TCH 58).

SC-3, 20 MAR 2025 to 17 APR 2025

SC-3, 20 MAR 2025 to 17 APR 2025