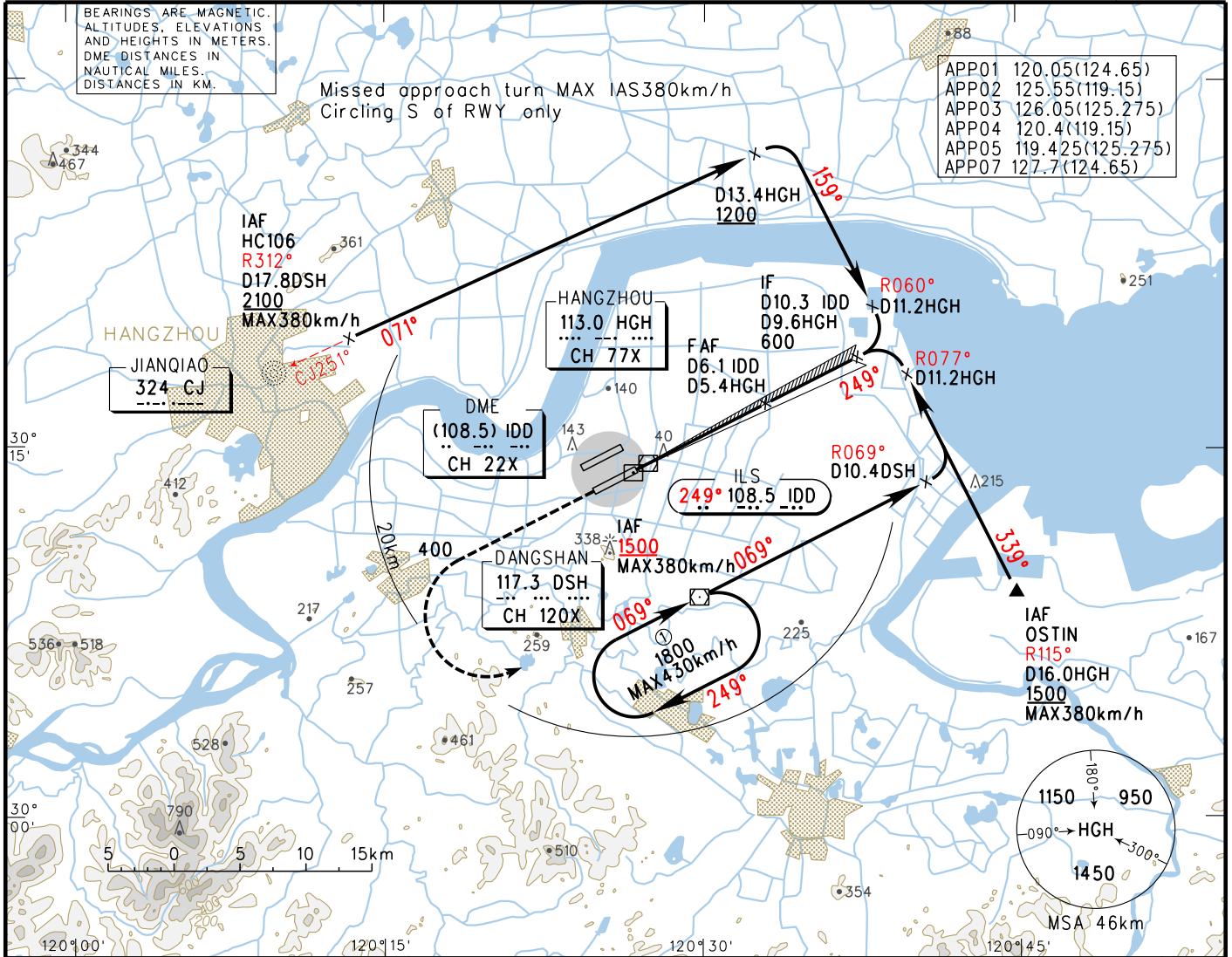


INSTRUMENT APPROACH CHART-ICAO

VAR 5.7° W
 AERODROME ELEV 6.7 D-ATIS 127.25
 THR RWY25 ELEV 6.7 TWR(S) 118.3(118.75)

ZSHC HANGZHOU/Xiaoshan

ILS/DME y RWY25

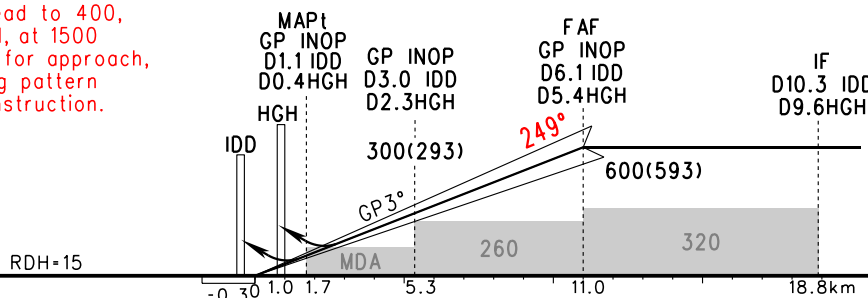


GP INOP	DME (IDD) (NM)	1	2	3	4	5	6	7
	ALT (m)		200	300	394	491	588	

TL 3600
 TA 3000
 3300 (QNH ≥ 1031hPa)
 2700 (QNH ≤ 979hPa)

MISSED APPROACH

Climb straight ahead to 400, turn LEFT to DSH, at 1500 or above to DSH for approach, or join the holding pattern and follow ATC instruction.



ILS/DME	67(60) 550/800				FAF-MAPt(GP INOP) 9.3km						
	A	B	C	D	GS in kt	80	100	120	140	160	180
DA(H) RVR/VIS					80	100	120	140	160	180	
GP INOP	140(133) 1800	140(133) 2000	140(133) 2200		150	185	220	260	295	335	
CIRCLING	430(423) 3200	430(423) 3600	460(453) 4800	460(453) 5000	Time min:sec	3:43	3:01	2:32	2:09	1:53	1:40
	HUD Special CAT II				Rate of descent m/s	2.2	2.7	3.2	3.8	4.3	4.9
CAT A,B,C,D	(DH)(30),(RA)(32), RVR350				● HUD Special CAT I: (DH)(45),(RA)(47),RVR450 Changes: MAG VAR, procedure, OBST.						