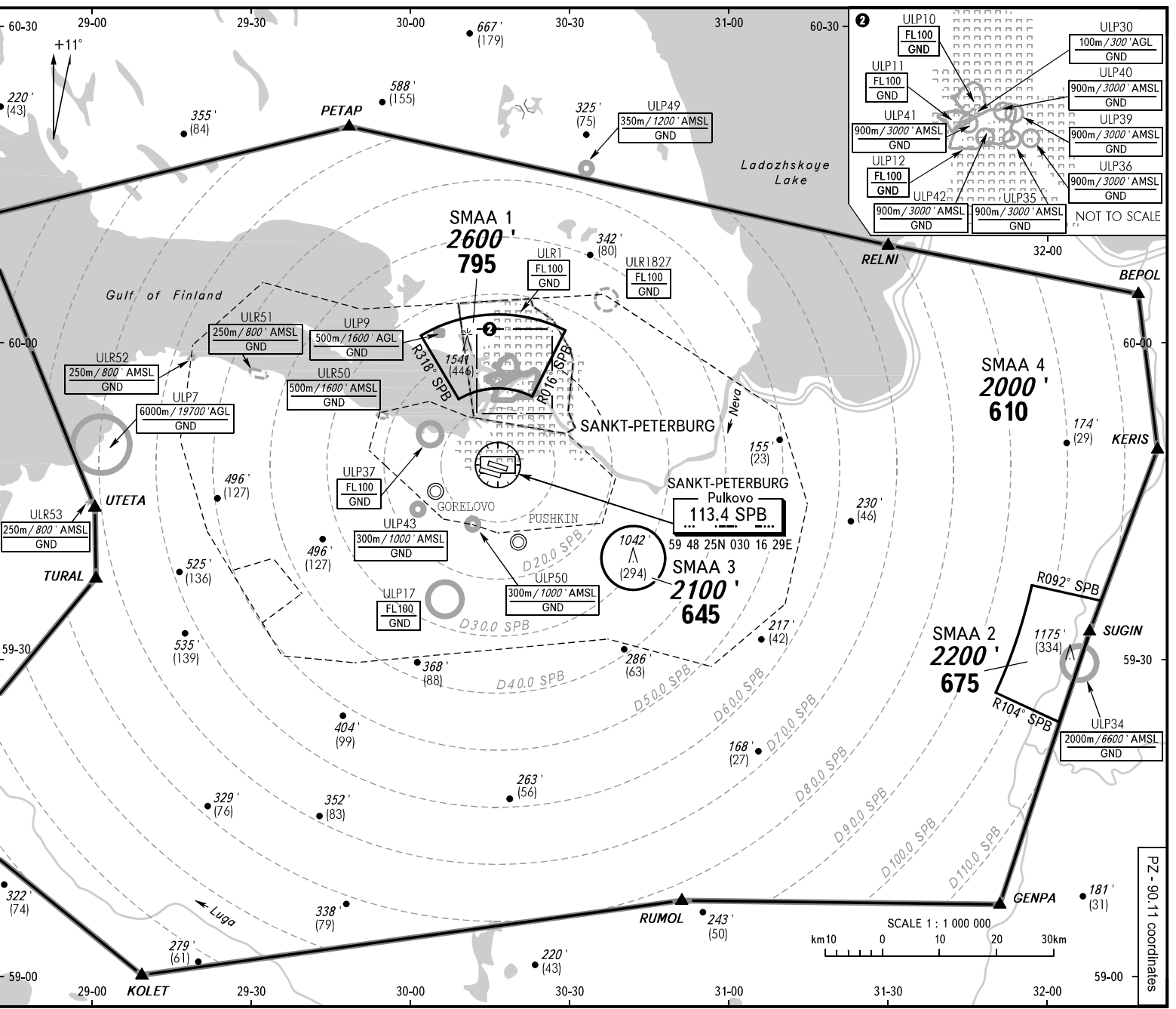


ATC SURVEILLANCE MINIMUM  
ALTITUDE CHART - ICAO  
SANKT-PETERBURG, RUSSIA  
PULKOVO

ELEV 79' / 24m  
TRANSITION ALTI: 3500'  
TRANSITION HGT: (1050)



**CHANGE: CTR 2**

**APPROACH** SEE ULLI-55  
**RADAR** H24 120 300  
**TOWER** H24 118.700 10R/28L  
**TOWER** H24 118.100 10L/28R

BEARINGS AND TRACKS ARE MAGNETIC  
 ALTITUDES IN FEET AND METRES  
 ELEVATIONS IN FEET AND METRES  
 DISTANCES IN KILOMETRES

Federal Air Transport Agency

1. The chart may only be used for cross-checking of altitudes assigned while the aircraft is identified under radar control.  
 2. TEMPERATURE CORRECTION:  
 The minimum vectoring altitudes must be corrected by altimeter temperature correction.

COMMUNICATION FAILURE: In accordance with the procedures described in AIP, The coordinates of SMAA are listed overleaf.

AIRAC AMDT 11/24

**SANKT-PETERBURG, RUSSIA**  
**PULKOVO**

<b>SURVEILLANCE MINIMUM ALTITUDE AREAS</b>		
<b>IDENT</b>	<b>MNM ALT</b>	<b>LATERAL LIMITS (PZ-90.11 coordinates)</b>
SMAA 1	2600 ft 795 m	595438N 0300908E - 600038N 0300159E, then clockwise by arc of a circle radius of 26.4 KM centred at 594825N 0301629E to 600107N 0302914E - 595453N 0302257E, then anticlockwise by arc of a circle radius of 13.4 KM centred at 594825N 0301629E to 595438N 0300908E.
SMAA 2	2200ft 675 m	593447N 0320853E - 593625N 0315605E, then clockwise by arc of a circle radius of 96 KM centred at 594825N 0301629E to 592622N 0314853E - 592327N 0320037E - 593447N 0320853E.
SMAA 3	2100 ft 645 m	A circle radius of 5.6 KM centred at 593912N 0304150E.
SMAA 4	2000 ft 610 m	602020N 0294808E - 600850N 0313029E - 600339N 0321735E - 594856N 0322018E - 593155N 0320636E - 590622N 0314843E - 590713N 0305017E - 585959N 0291113E - 591644N 0282918E - 593723N 0290128E - 594405N 0290102E - 601112N 0283754E - 602020N 0294808E.