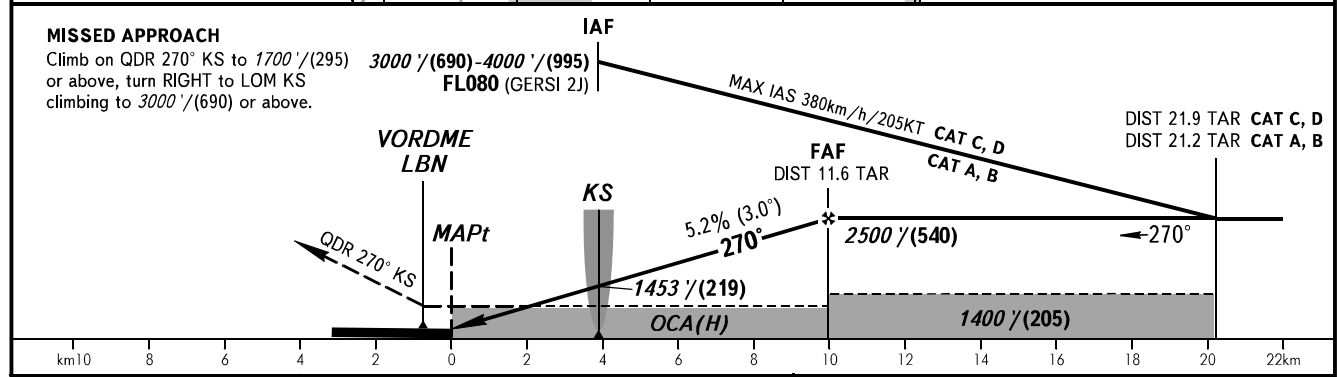
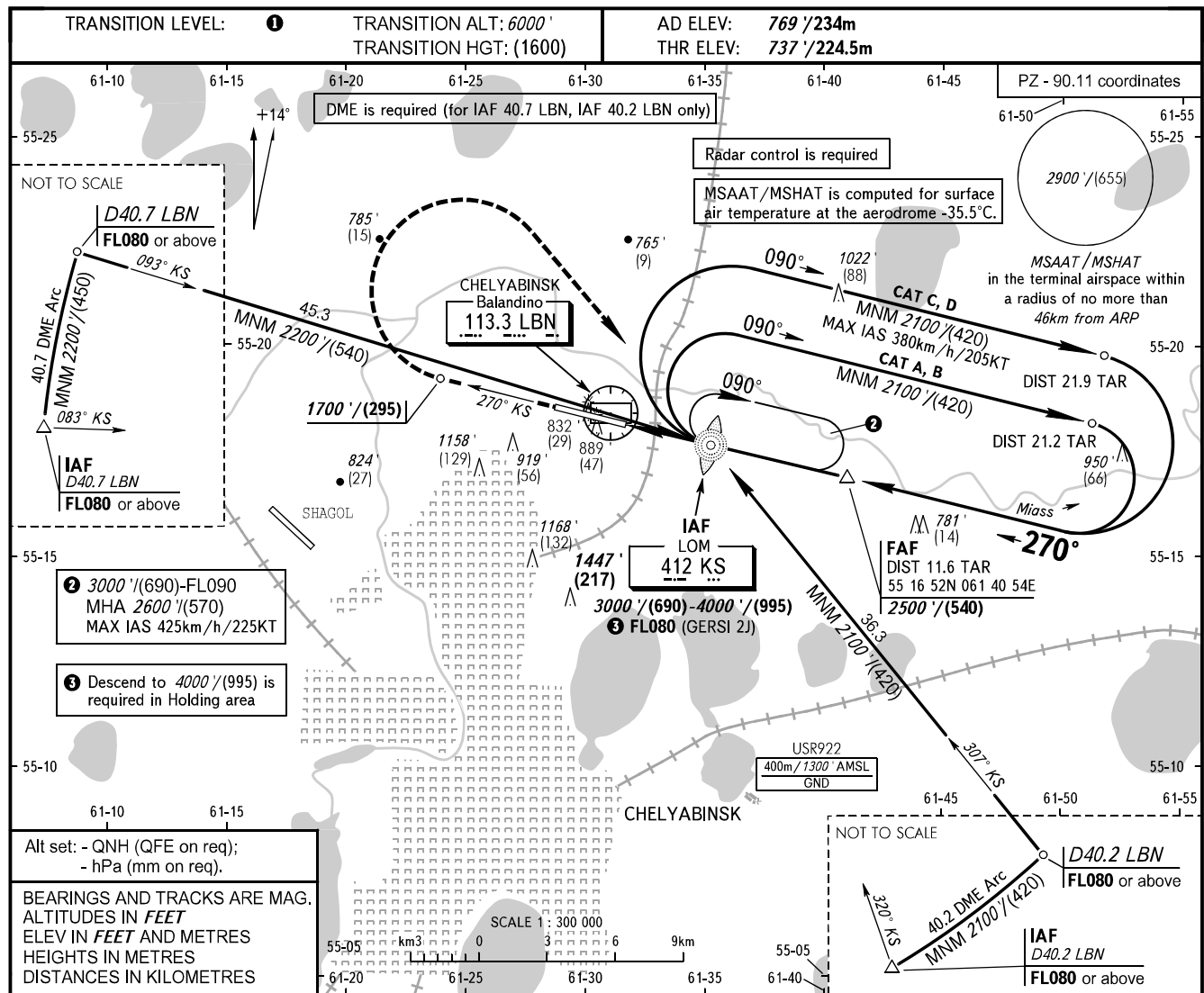


**INSTRUMENT
APPROACH
CHART - ICAO**

**CHELYABINSK, RUSSIA
BALANDINO
NDB RWY 27**

RADAR START 133.200
START 125.200



OCA(H)		A	B	C	D				
Straight-in Approach		1180' (440') (135)	1180' (440') (135)	1180' (440') (135)	1180' (440') (135)				
	Circling	1220' (450') (140)	1460' (690') (210)	1640' (870') (265)	1900' (1140') (345)				
GROUND SPEED	km/h	150	180	210	240	270	300	330	360
RATE OF DESCENT	kt	81	97	113	130	146	162	178	194
	m/s	2.2	2.6	3.0	3.5	3.9	4.3	4.8	5.2
FAF - MAPt 10.0 km	ft/min	427	512	597	682	768	853	938	1024
	min:sec	4:01	3:20	2:52	2:30	2:13	2:00	1:49	1:40

TRANSITION LEVEL:
- FL070 when QNH is 1013 hPa (760mm mercury column) or above;
- FL080 when QNH is 977 hPa (733mm mercury column) or above, but less than 1013 hPa (760mm mercury column);
- FL090 when QNH is less than 977 hPa (733mm mercury column).

WARNING
MAPt at RWY 27 THR. Turn before passing MAPt is PROHIBITED.