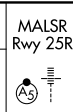


|  |                        |                         |                     |                     |
|--|------------------------|-------------------------|---------------------|---------------------|
| LOC/DME I-FCN<br><b>111.1</b><br>Chan 48 | APP CRS<br><b>251°</b> | Rwy ldg<br><b>11134</b> | 25R<br><b>11095</b> | 25L<br><b>11095</b> |
|  |                        | TDZE<br><b>104</b>      | <b>104</b>          | <b>104</b>          |
|  |                        | Apt Elev<br><b>128</b>  | <b>128</b>          | <b>128</b>          |

# ILS or LOC RWY 25R

LOS ANGELES INTL (LAX)

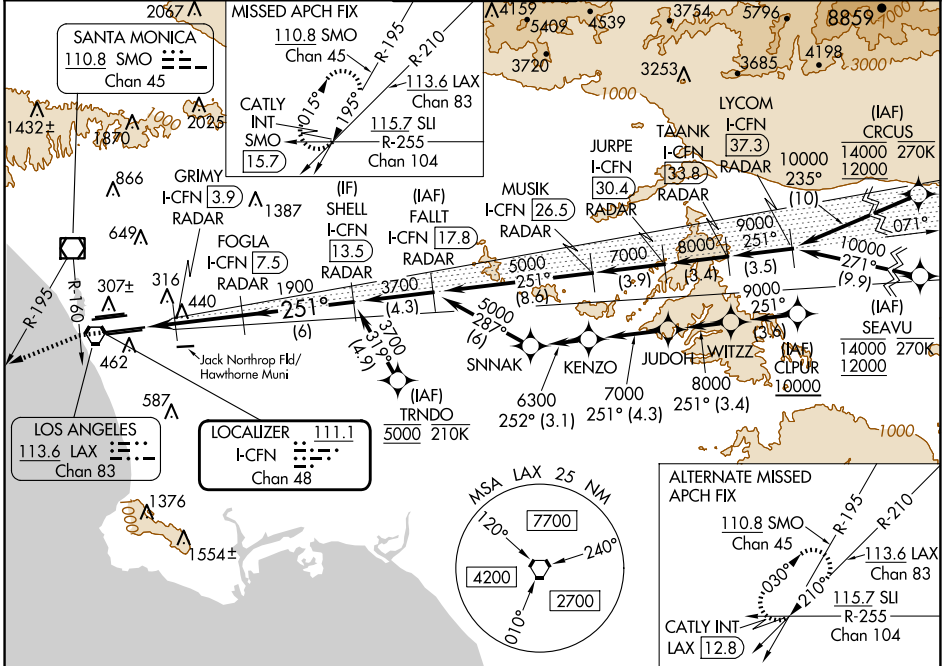
From CRCUS, SEAVU, TRNDO, CLPUR: RNAV 1-GPS required.  
DME or RADAR required.



ALS-F2 Rwy 25L  
MISSED APPROACH: Climb to 2000 on heading 251° until crossing SMO R-160 then left turn on heading 236° and SMO VOR/DME R-195 to CATLY INT/SMO 15.7 DME and hold.

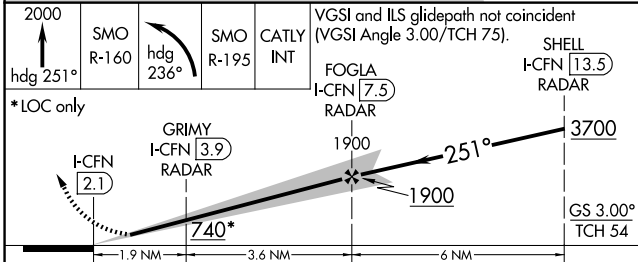
Simultaneous approach authorized. Simultaneous approach authorized with HHR. For inop ALS increase Sidestep 25L Cat C visibility to 1½ SM. #RVR 1800 authorized with use of FD or AP or HUD to DA.

|   |  |   |  |   |   |       |
|---|--|---|--|---|---|-------|
| D-ATIS<br>ARR <b>133.8</b><br>DEP <b>135.65</b> | SOCAL APP CON<br><b>124.3 363.2</b><br>(ARCFM WEST)<br><b>124.5 235.975</b><br>(225°-044°) | SOCAL APP CON<br><b>124.9 269.0</b><br>(090°-224°)<br><b>128.5 360.7</b><br>(045°-089°) | LOS ANGELES TOWER<br><b>N 133.9 239.3</b><br><b>S 120.95 379.1</b> | GND CON<br><b>N 121.65 327.0</b><br><b>S 121.75 327.0</b><br><b>W 121.4 327.0</b> | CLNC DEL<br><b>120.35</b><br><b>327.0</b> | CPDLC |
|---|--|---|--|---|---|-------|



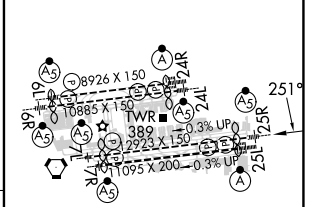
SW-3, 20 MAR 2025 to 17 APR 2025

SW-3, 20 MAR 2025 to 17 APR 2025



|              |        |             |              |              |
|--------------|--------|-------------|--------------|--------------|
| CATEGORY     | A      | B           | C            | D            |
| S-ILS 25R#   | 304/24 |             | 200 (200-½)  |              |
| S-LOC 25R    | 700/24 | 596 (600-½) | 700-1¼       | 596 (600-1¼) |
| SIDESTEP 25L | 700/55 | 596 (600-1) | 700-1¼       | 700-1½       |
|              |        |             | 596 (600-1¼) | 596 (600-1½) |

|          |              |              |
|----------|--------------|--------------|
| ELEV 128 | TDZE 25R 104 | TDZE 25L 104 |
|----------|--------------|--------------|



|                                   |                          |
|-----------------------------------|--------------------------|
| TDZ/CL Rwyys 6R, 7L, 24R, and 25L | HIRL all Rwyys           |
| FAF to MAP 5.5 NM                 |                          |
| Knots                             | 60 90 120 150 180        |
| Min:Sec                           | 5:30 3:40 2:45 2:12 1:50 |