

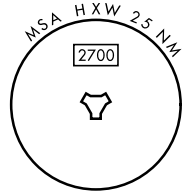
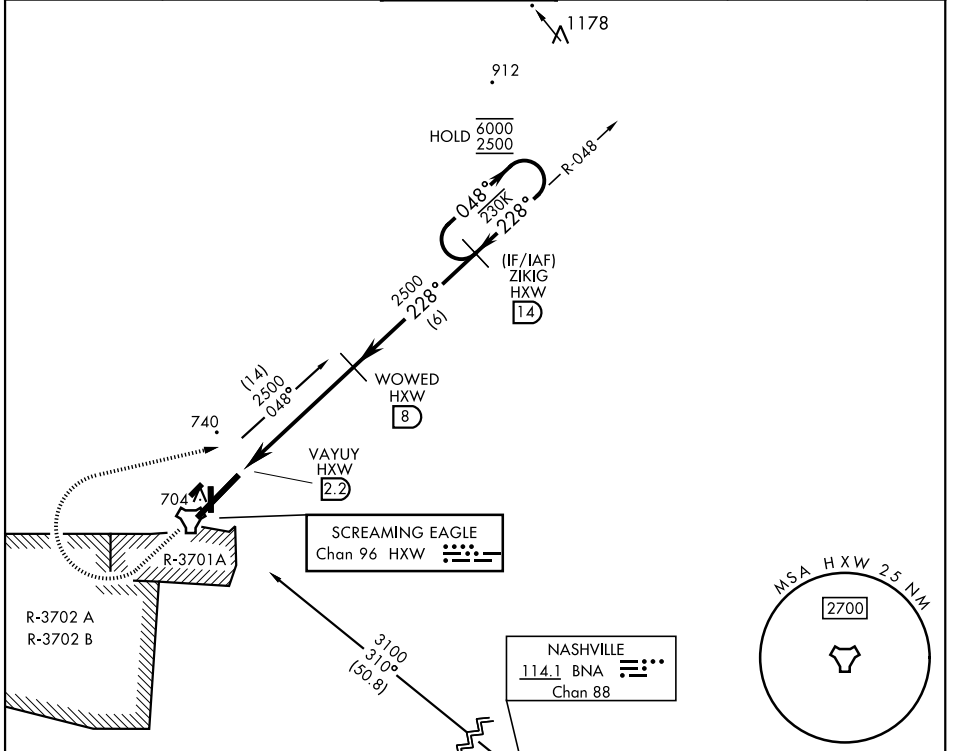
# TACAN RWY 23

TACAN HXW Chan 96	APCH CRS 228°	Rwy Idg 10,926
		TDZE 571
		Arprt Elev 571

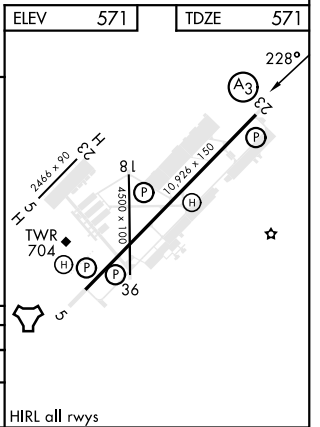
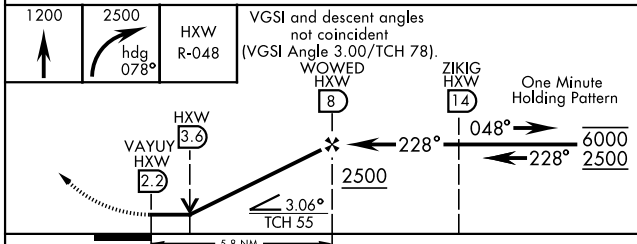
[USA]

CAMPBELL AAF (KHOP)

<p>▼ * When ALS inop, increase CAT AB RVR to 55, vis to 1 mile; CAT CDE vis to 1 3/8 mile. ** Circling not authorized SE of Rwy 5-23.</p>		<p>SSALR (A3)</p>	<p>MISSED APPROACH: Climb to 1200 then climbing right turn to 2500 on hdg 078° and HXW TACAN R-048 to ZIKIG/HXW 14 DME and hold.</p>		
ATIS 125.175 308.4	APP CON 118.1 269.525	TOWER 120.9 278.8	GND CON 121.8 266.8	CLNC DEL 138.8	ASR/PAR



ELEV	571	TDZE	571
------	-----	------	-----



CATEGORY	A	B	C	D	E
S-23 *	1080/24	509 (600-3/4)	1080/55	509 (600-1 1/4)	
CIRCLING **	1080-1	509 (600-1)	1080-1 1/2	509 (600-1 1/2)	1140-2 569 (600-2)

HIRL all rwys

# TACAN RWY 23

SE-1, 20 MAR 2025 to 17 APR 2025

SE-1, 20 MAR 2025 to 17 APR 2025