

**EL PLUMERILLO (SAME)**

Carta de aproximación por instrumentos  
Instrument approach chart

**ILS Z RWY 36**

MENDOZA

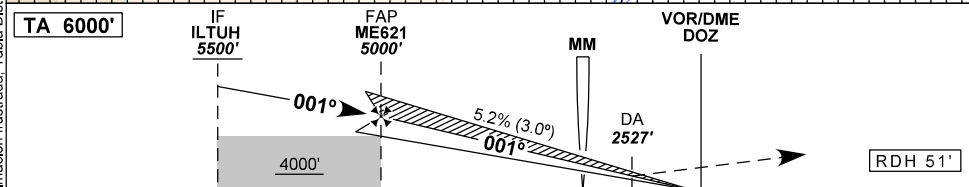
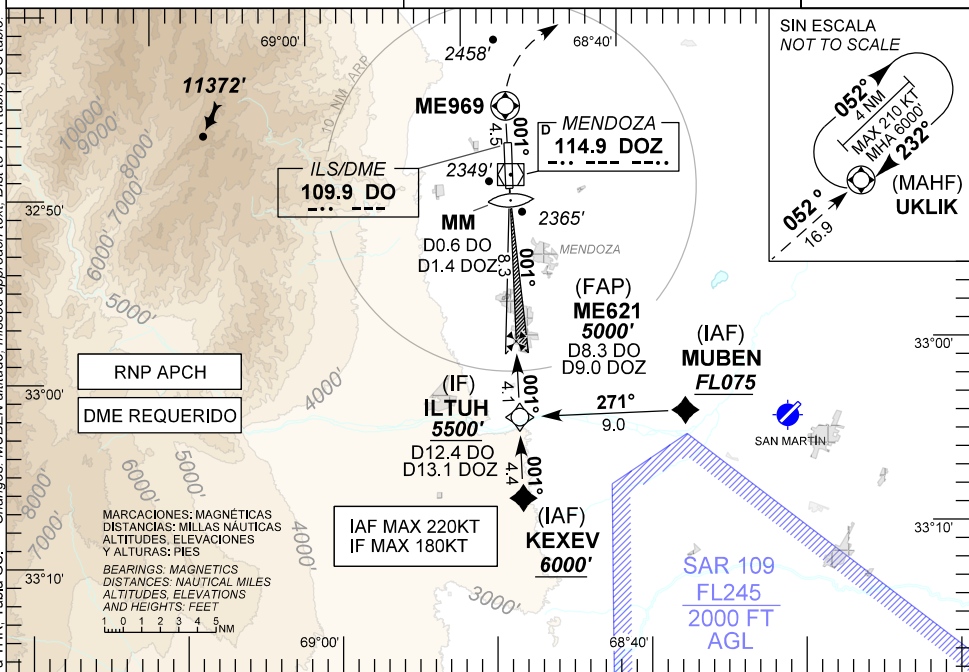
ATIS <b>127.60</b>	MENDOZA CTL <b>124.20 122.10</b>	MENDOZA APP <b>119.90 118.65</b>	MENDOZA TWR <b>119.90 118.65</b>	MENDOZA GND <b>121.95</b>	EMERG <b>121.50</b>
LOC DO <b>109.9</b>	FINAL APCH CRS <b>001°</b>	ALTITUD MNM ME621 <b>5000'</b> (2690')	ILS DA(H) <b>2527'</b> (217')	AD Elev <b>2310'</b>	THR Elev <b>2310'</b>

Aproximación frustrada: ASC sobre curso 001° hasta ME969, luego viraje derecha para interceptar curso 052° hasta UKLIK alcanzando MNM 5700 ft, HLDG ascendiendo hasta 6000 ft y seguir instrucciones del ATC.  
Missed approach: Climb on course 001° to ME969, then turn right to intercept course 052° to UKLIK reaching MNM 5700 ft, HLDG climbing to 6000 ft or as directed by ATC.

NOTA: NIL.

RMK: NIL.

MSA 25 NM ARP



TO THR 36 (NM)	12.4	8.3	0.6	0.5	0.0
TO DO (DME)	12.4	8.3	0.6	0.5	0.0
TO DOZ (DME)	13.1	9.0	1.4	1.2	0.8

DIRECTA RWY 36 / Straight in RWY 36						Circulación Visual <b>Circle to land</b>				
CAT	ILS/DME					CAT	MDA	MDH	VIS	
	DA 2527'		DH 217'							
VIS ALS			VIS SIN ALS			Circulación Visual N.A. <i>Circle to land N.A.</i>				
A	1000 M					1200 M				
B										
C										
D										

GS KT	90	110	130	150	160	DIST to THR	8,3	5	3	2	0,5
FAP - THR 8,3 NM	5:32	4:32	3:50	3:19	3:07	ALT	5000	3950	3320	3000	2527
FPM	480	580	690	790	850	HGT	(2690)	(1640)	(1010)	(690)	(217)

18 JULIO 2019

DIRECCIÓN REGULACIÓN NORMAS Y PROCEDIMIENTOS - DNINA

**EL PLUMERILLO (SAME) ILS Z RWY 36**

<b>FIX IDENT</b>	<b>COORDINATES</b>
RW36	32°50'39.56" S 068°47'35.02" W
ILTUH	33°03'04.64" S 068°47'46.16" W
ME621	32°58'57.83" S 068°47'42.46" W
UKLIK	32°38'08.62" S 068°29'57.48" W
MUBEN	33°03'11.00" S 068°37'05.00" W
KEXEV	33°07'28.06" S 068°47'50.11" W
ME969	32°46'10.41" S 068°47'33.52" W

31 ENERO 2019

## 1/2 EL PLUMERILLO (SAME) ILS Z RWY 36

Seq Num	Fix Ident	Path Terminator	Fly Over	Distance (NM)	Course M°(T°)	Turn	Altitude (ft/FL)	Altitude Description	Speed Limit (Kt)	Navigation Specification	RNP	Dec (ARP 2017)
010	KEXEV	IF	N	N/A	N/A	N/A	6000	+	-220	RNP APCH	1.0	0
020	ILTUH	TF	N	4.4	001 (000.7)	N/A	5500	+	-180	RNP APCH	1.0	0
010	MUBEN	IF	N	N/A	N/A	N/A	FL 075	+	-220	RNP APCH	1.0	0
020	ILTUH	TF	N	9.0	271 (270.7)	N/A	5500	+	-180	RNP APCH	1.0	0
010	ILTUH	IF	N	N/A	N/A	N/A	5500	+	-180	RNP APCH	1.0	0
020	ME621	CF	Y	4.1	001 (000.7)	N/A	5000	@	N/A	N/A	N/A	0
030	RW36	CF	Y	8.3	001 (000.7)	N/A	2361	@	N/A	N/A	N/A	0
040	ME969	CF	Y	4.5	001 (000.3)	N/A	N/A	N/A	-210	RNP APCH	1.0	0

18 JULIO 2019

### 2/2 EL PLUMERILLO (SAME) ILS Z RWY 36

Seq Num	Fix Ident	Path Terminator	Fly Over	Distance (NM)	Course M°(T°)	Turn	Altitude (ft/FL)	Altitude Description	Speed Limit (Kt)	Navigation Specification	RNP	Dec (ARP 2017)
050	UKLIK	CF	N	16.9	052 (051.2)	N/A	5700	+	-210	RNP APCH	1.0	0
060	UKLIK	HM	Y	4.0	232 (231.2)	R	6000	+	-210	RNP APCH	1.0	0

18 JULIO 2019

**EL PLUMERILLO (SAME)**

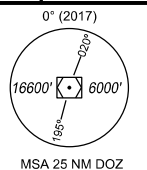
Carta de aproximación por instrumentos  
Instrument approach chart

**ILS Y RWY 36**

MENDOZA

ATIS <b>127.60</b>	MENDOZA CTL <b>124.20 122.10</b>	MENDOZA APP <b>119.90 118.65</b>	MENDOZA TWR <b>119.90 118.65</b>	MENDOZA GND <b>121.95</b>	EMERG <b>121.50</b>
-----------------------	-------------------------------------	-------------------------------------	-------------------------------------	------------------------------	------------------------

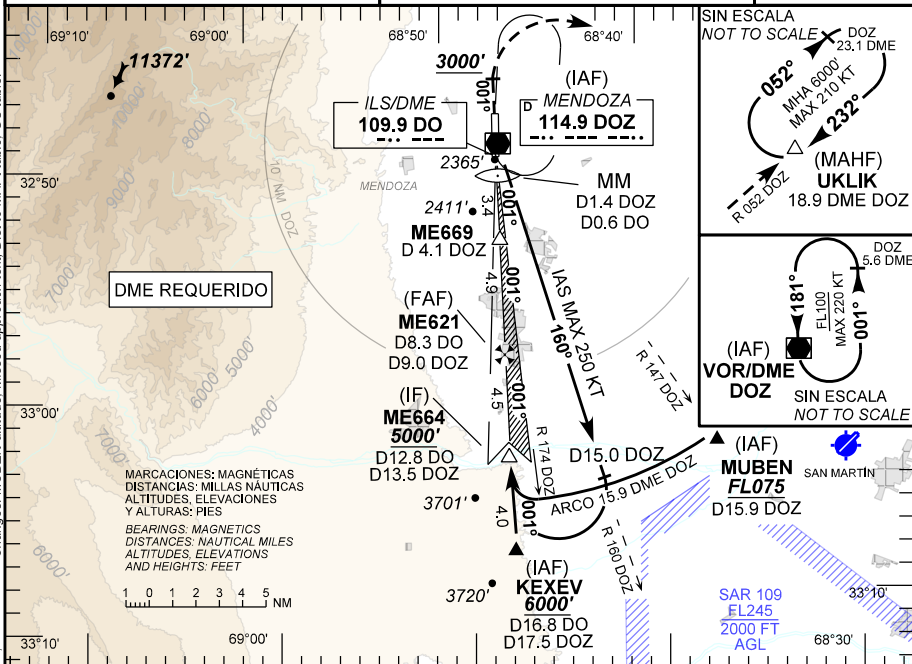
LOC DO <b>109.9</b>	FINAL APCH CRS <b>001°</b>	ALTITUD MNM ME621 <b>5000'</b> (2690)	ILS DA(H) <b>2527'</b> (217')	AD Elev <b>2310'</b>	THR Elev <b>2310'</b>
------------------------	-------------------------------	---	-------------------------------------	-------------------------	--------------------------



Aproximación frustrada: ASC sobre rumbo de pista hasta 3000 ft, luego viraje derecha para interceptar R 052 DOZ hasta UKLIK alcanzando MNM 5700 ft, HLDG ascendiendo hasta 6000 ft y seguir instrucciones del ATC.  
Missed approach: Climb on RWY heading until 3000 ft, then turn right to intercept R 052 DOZ to UKLIK reaching MNM 5700 ft, HLDG climbing to 6000 ft or as directed by ATC.

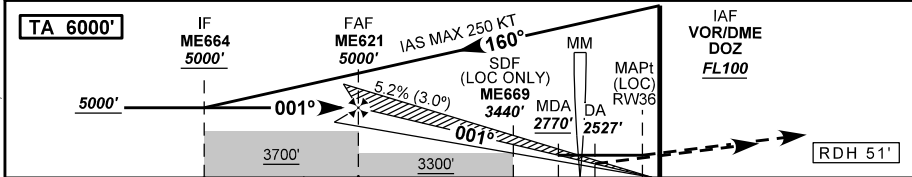
NOTA: NIL.

RMK: NIL.



PANOS OPS Cambios: Altitud MUBEN Aproximación frustrada. Tabla Dist a MAPt. Tabla GS. Changes: MUBEN altitude. Missed approach text. Dist to MAPt table. GS table.

DISEÑO EAMA S.A. - NAVEGACION AEREA ARGENTINA  
DIRECCION REGULACION NORMAS Y PROCEDIMIENTOS - DNINA



TO THR 36 (NM)	12.8	8.3	3.4	1.3	0.6	0.5	0.0
TO DOZ (DME)	12.8	8.3	3.4	1.3	0.6	0.5	0.0
TO DOZ (DME)	13.5	9.0	4.1	2.0	1.4	1.3	0.8

CAT	DIRECTA RWY 36 / Straight in RWY 36				Circulación Visual						
	ILS/DME		LOC/DME		Circle to land						
	DA 2527'	DH 217'	MDA 2770'	MDH 460'	CAT	MDA	MDH	VIS			
A	1000 M	1200 M	2100 M	2300 M	A	Circulación Visual N.A.	Circulación Visual N.A.	Circulación Visual N.A.			
B											
C											
D											
GS KT	90	110	130	150	160	DIST to MAPt	8.3	5	3	2	1.3
FAF - MAPt 8.3 NM	5:32	4:31	3:50	3:19	3:07	ALT	5000	3950	3320	3000	2770
FPM	480	580	690	800	850	HGT	(2690)	(1640)	(1010)	(690)	(460)

18 JULIO 2019

**EL PLUMERILLO (SAME)**  
**MENDOZA**

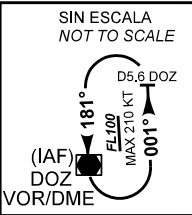
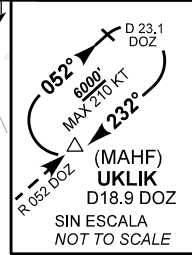
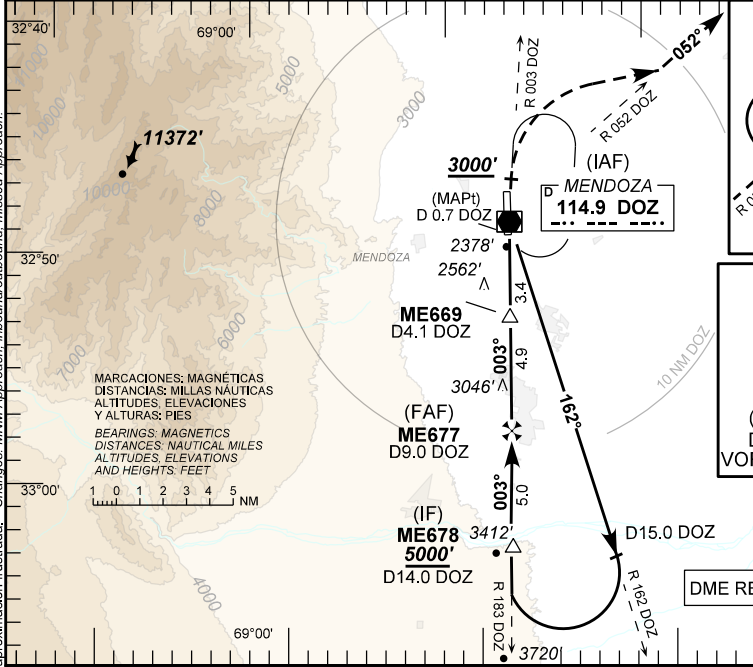
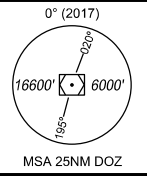
Carta de aproximación por instrumentos  
Instrument approach chart

**VOR RWY 36**

ATIS <b>127.60</b>	MENDOZA CTL <b>124.20 122.10</b>	MENDOZA APP <b>119.90 118.65</b>	MENDOZA TWR <b>119.90 118.65</b>	MENDOZA GND <b>121.95</b>	EMERG <b>121.50</b>
VOR DOZ <b>114.9</b>	FINAL APCH CRS <b>003°</b>	ALTITUD MNM ME677 <b>5000'</b> (2690')	MDA (H) <b>2790'</b> (480')	AD Elev <b>2310'</b>	THR Elev <b>2310'</b>

Aproximación frustrada: ASC sobre R003 DOZ hasta 3000 ft, luego viraje a la derecha en ascenso hasta 6000 ft para interceptar R052 DOZ hasta UKLIK, HLDG y seguir instrucciones del ATC.

Missed approach: Climb on DOZ R003 until reach 3000 ft, then turn right climbing to 6000 ft to intercept DOZ R052 to UKLIK, HLDG or as directed by ATC.



<b>TA 6000'</b>	IF ME678 5000'	FAF ME677 5000'	SDF ME669 3440'	MDA 2790'	(IAF) VOR DOZ FL100
	5000'	4000'	3300'	MDA	MAPt
	162°	5.2% (3.0°)	003°		
TO THR 36 (NM)	13.3	8.3	3.4	1.4	0
TO DOZ (DME)	14.0	9.0	4.1	2.1	0.7

DIRECTA RWY 36 / Straight in RWY 36						Circulación Visual N.A. Circle to land N.A.					
CAT	VOR/DME					MDH 480'					
	MDA 2790'		VIS			VIS SIN ALS		CAT	MDA	MDH	VIS
A	2200 M		2400 M			2400 M		A	Circulación Visual N.A. Circle to land N.A.		
B	2400 M		2600 M			2600 M		B			
C	2400 M		2600 M			2600 M		C			
D	2400 M		2600 M			2600 M		D			
GS KT	90	110	130	150	160	DIST to MAPt	8,3	4	3	2	1,4
FAF - MAPt 8,3 NM	5:32	4:31	3:50	3:19	3:06	ALT	5000	3633	3315	2996	2790
FPM	480	580	690	800	850	HGT	(2690)	(1323)	(1005)	(686)	(480)

11 OCTUBRE 2018

**EL PLUMERILLO (SAME)**

Carta de aproximación por instrumentos  
Instrument approach chart

**RNP RWY 36**

MENDOZA

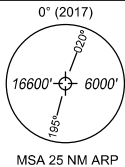
ATIS <b>127.60</b>	MENDOZA CTL <b>124.20 122.10</b>	MENDOZA APP <b>119.90 118.65</b>	MENDOZA TWR <b>119.90 118.65</b>	MENDOZA GND <b>121.95</b>	EMERG <b>121.50</b>
<b>RNP</b>	FINAL APCH CRS <b>001°</b>	ALTITUD MNM TODAR <b>4000'</b> (1690')	LNAV / VNAV DA(H) <b>2580'</b> (270')	AD Elev <b>2310'</b>	THR Elev <b>2310'</b>

Aproximación frustrada: ASC sobre curso 001° hasta ME969, luego viraje derecha para interceptar curso 052° hasta UKLIK alcanzando MNM 5700 ft, HLDG ascendiendo hasta 6000 ft y seguir instrucciones del ATC.

Missed Approach: climb on track 001° to ME969, then turn right to intercept track 052° to UKLIK reaching MNM 5700 ft. HLDG climbing to 6000 ft or as directed by ATC.

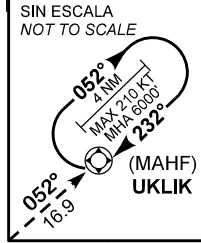
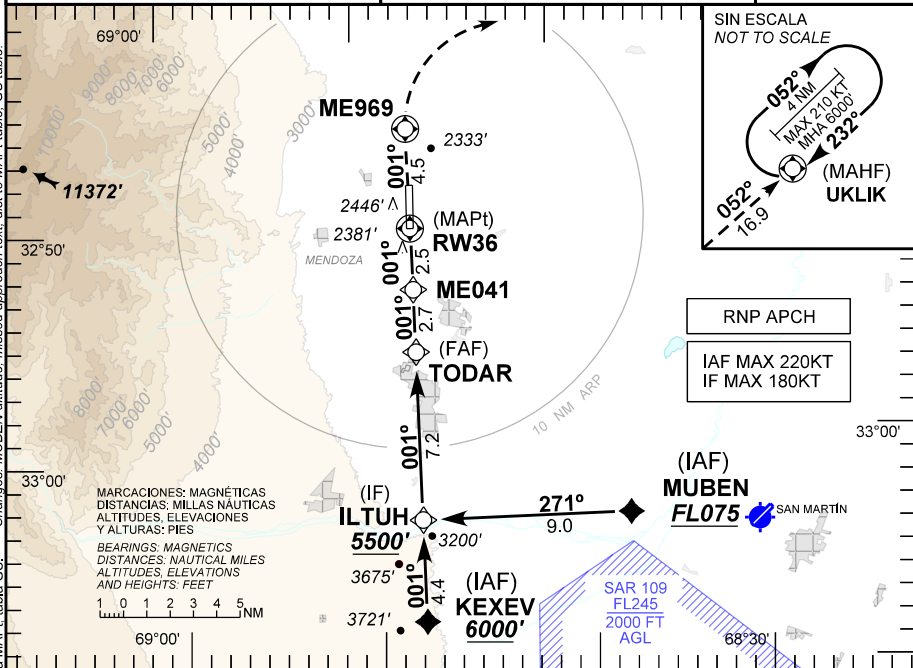
NOTA: Para sistemas Baro VNAV no compensado, debajo de -10° C o superior a 48° C. N.A.

RMK: For uncompensated Baro VNAV systems NA, below -10°C or above 48°C.



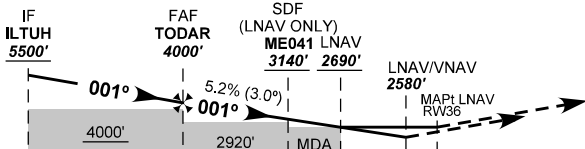
Changes: MUBEN altitude: missed approach text: dist to MAPt: table: GS table.

PANS OPS: Altitud MUBEN: texto aproximación frustrada: tabla Dist a MAPt: tabla GS.



RNP APCH  
IAF MAX 220KT  
IF MAX 180KT

**TA 6000'**



**RDH 50'**

DIRECTA RWY 36 / Straight in RWY 36						Circulación Visual					
CAT	LNAV / VNAV		LNAV		Circle to land						
	DA 2580'	DH 270'	MDA 2690'	MDH 380'	CAT	MDA	MDH	VIS			
A	1100 M	1300 M	1700 M	1900 M	A	Circulación Visual N.A.	Circle to land N.A.				
B											
C											
D											
GS KT	90	110	130	150	160	DIST to MAPt	5.2	4	3	2	1.0
FAF - MAPt 5.2 NM	3:26	2:49	2:23	2:04	1:56	ALT	4000	3630	3320	3000	2690
FPM	480	580	690	800	850	HGT	(1690)	(1320)	(1010)	(690)	(380)

18 JULIO 2019

DISEÑO EAMA S.E. - NAVEGACION AEREA ARGENTINA

DIRECCION REGULACION NORMAS Y PROCEDIMIENTOS - DNINA

**EL PLUMERILLO (SAME) RNP RWY 36**

<b>FIX IDENT</b>	<b>COORDINATES</b>
ILTUH	33°03'04.64" S 068°47'46.16" W
TODAR	32°55'49.16" S 068°47'39.64" W
RW36	32°50'39.56" S 068°47'35.02" W
KEXEV	33°07'28.06" S 068°47'50.11" W
MUBEN	33°03'11.00" S 068°37'05.00" W
UKLIK	32°38'08.62" S 068°29'57.48" W
ME969	32°46'10.41" S 068°47'33.52" W
ME041	32°53'07.14" S 068°47'37.22" W

18 JULIO 2019

## 1/2 EL PLUMERILLO (SAME) RNP RWY 36

Seq Num	Fix Ident	Path Terminator	Fly Over	Distance (NM)	Course M°(T°)	Turn	Altitude (ft/FL)	Altitude Description	Speed Limit (Kt)	Navigation Specification	RNP	Dec (ARP 2017)
010	KEXEV	IF	N	N/A	N/A	N/A	6000	+	-220	RNP APCH	1.0	0
020	ILTUH	TF	N	4.4	001 (000.7)	N/A	5500	+	-180	RNP APCH	1.0	0
010	MUBEN	IF	N	N/A	N/A	N/A	FL 075	+	-220	RNP APCH	1.0	0
020	ILTUH	TF	N	9.0	271 (270.7)	N/A	5500	+	-180	RNP APCH	1.0	0
010	ILTUH	IF	N	N/A	N/A	N/A	5500	+	-180	RNP APCH	1.0	0
020	TODAR	TF	N	7.2	001 (000.7)	N/A	4000	+	N/A	RNP APCH	1.0	0
030	ME041	TF	N	2.7	001 (000.7)	N/A	3140	+	N/A	RNP APCH	0.3	0
040	RW36	TF	Y	2.5	001 (000.7)	N/A	2360	@	N/A	RNP APCH	0.3	0

18 JULIO 2019

### 2/2 EL PLUMERILLO (SAME) RNP RWY 36

Seq Num	Fix Ident	Path Terminator	Fly Over	Distance (NM)	Course M°(T°)	Turn	Altitude (ft/FL)	Altitude Description	Speed Limit (Kt)	Navigation Specification	RNP	Dec (ARP 2017)
050	ME969	CF	Y	4.5	001 (000.3)	N/A	N/A	N/A	-210	RNP APCH	1.0	0
060	UKLIK	CF	N	16.9	052 (051.2)	N/A	5700	+	-210	RNP APCH	1.0	0
070	UKLIK	HM	Y	4.0	232 (231.2)	R	6000	+	-210	RNP APCH	1.0	0

18 JULIO 2019

**EL PLUMERILLO (SAME)**  
**MENDOZA**

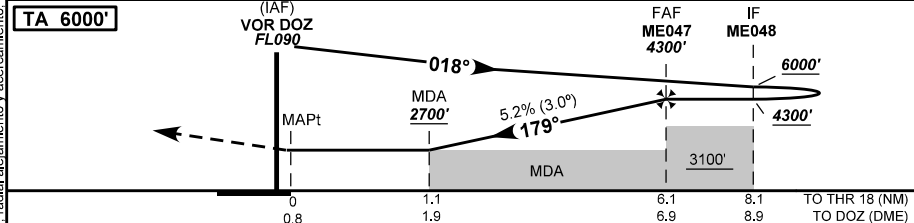
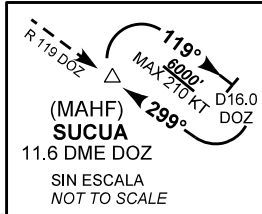
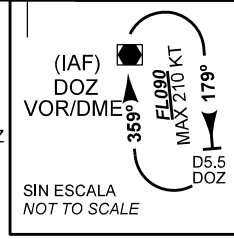
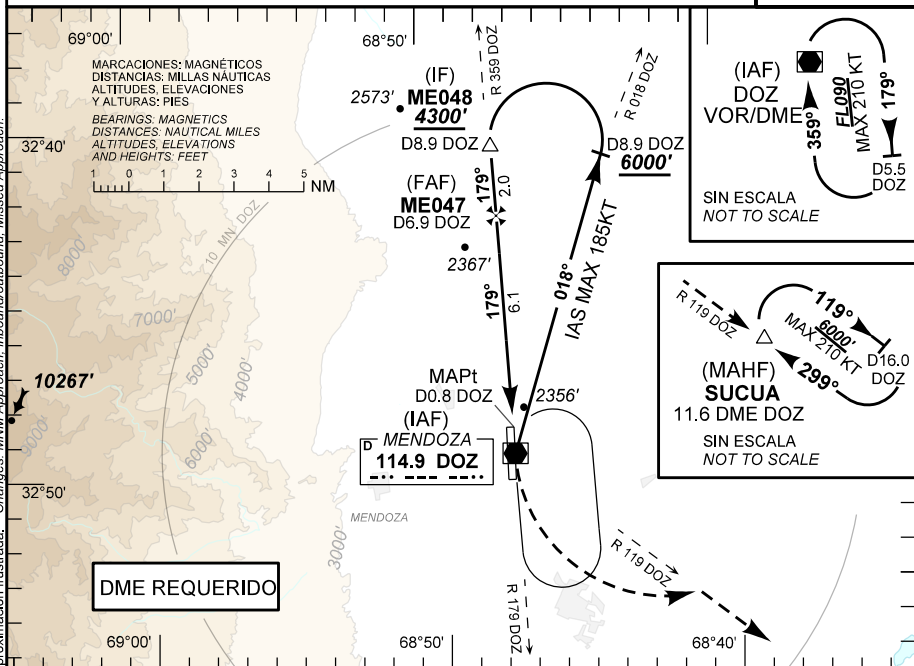
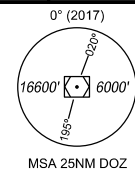
Carta de aproximación por instrumentos  
Instrument approach chart

**VOR RWY 18**

ATIS <b>127.60</b>	MENDOZA CTL <b>124.20 122.10</b>	MENDOZA APP <b>119.90 118.65</b>	MENDOZA TWR <b>119.90 118.65</b>	MENDOZA GND <b>121.95</b>	EMERG <b>121.50</b>
VOR DOZ <b>114.9</b>	FINAL APCH CRS <b>179°</b>	ALTITUD MNM ME047 <b>4300' (2010)</b>	MDA (H) <b>2700' (410')</b>	AD Elev <b>2310'</b>	THR Elev <b>2290'</b>

Aproximación frustrada: ASC para 6000 ft, viraje izquierda para interceptar R119 DOZ hasta SUCUA, HLDG y seguir instrucciones del ATC.

Missed approach: Climb to 6000 ft, turn left to intercept DOZ R119 until SUCUA, HLDG and as directed by ATC.



DIRECTA RWY 18 / Straight in RWY 18				Circulación Visual N.A. Circle to land N.A.			
CAT	VOR/DME			MDH 410'			
	MDA 2700'						
VIS							
A	2100 M			Circulación Visual			
B							
C	2300 M			Circle to land			
D							

GS KT	90	110	130	150	160	DIST to MAPt	6,1	4	3	2	1,1
FAF - MAPt 6,1 NM	5:24	4:25	3:44	3:14	3:02	ALT	4300	3627	3305	2983	2700
FPM	360	440	520	600	650	HGT	(2010)	(1337)	(1015)	(693)	(410)

11 OCTUBRE 2018

**EL PLUMERILLO (SAME)**

Carta de aproximación por instrumentos  
Instrument approach chart

**RNP RWY 18 (LNAV/VNAV)**

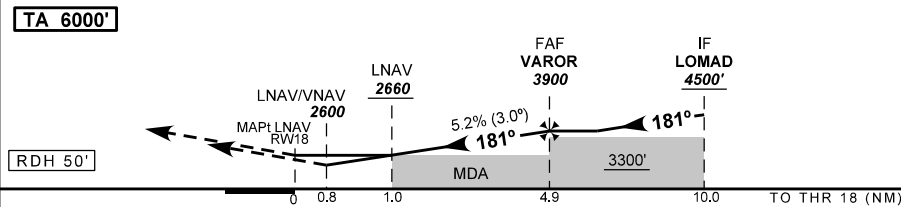
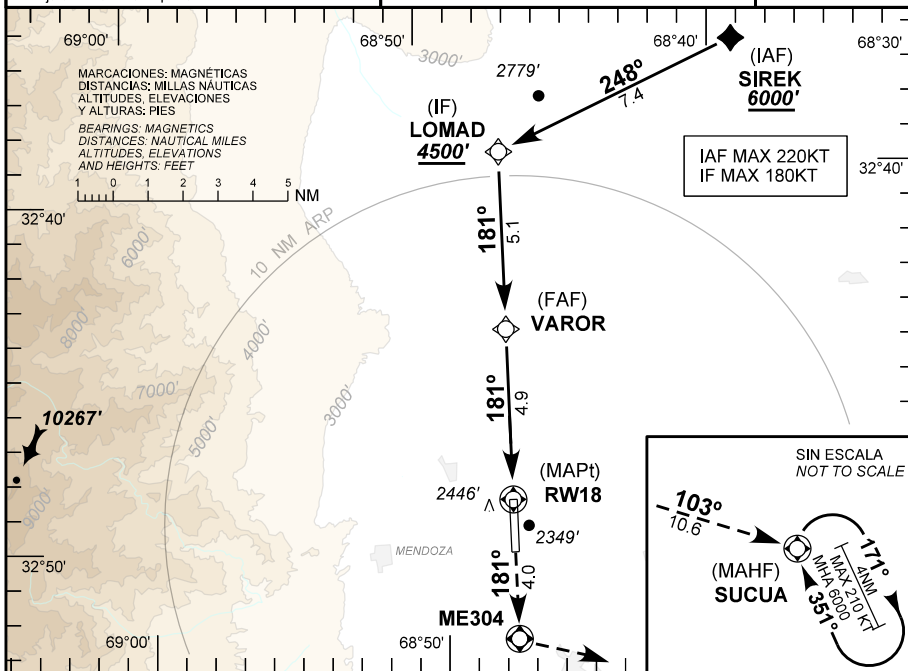
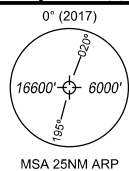
MENDOZA

ATIS <b>127.60</b>	MENDOZA CTL <b>124.20 122.10</b>	MENDOZA APP <b>119.90 118.65</b>	MENDOZA TWR <b>119.90 118.65</b>	MENDOZA GND <b>121.95</b>	EMERG <b>121.50</b>
<b>RNP</b>	FINAL APCH CRS <b>181°</b>	ALTITUD MNM VAROR <b>3900'</b> (1610')	LNAV / VNAV DA(H) <b>2600'</b> (310')	AD Elev <b>2310'</b>	THR Elev <b>2290'</b>

Aproximación frustrada: ASC para 6000 ft, en curso 181° hasta ME304, virar a la izquierda en curso 103° hasta SUCUA, HLDG (MAX IAS 210 KT) y seguir instrucciones del ATC.  
Missed Approach: Climb to 6000 ft, on track 181° to ME304, turn left on track 103° to SUCUA, HLDG (MAX IAS 210 KT) or as directed by ATC.

Para sistemas Baro VNAV no compensado, debajo de -10° C o superior a 48° C N.A.

For uncompensated Baro VNAV systems NA, below -10°C or above 48°C



DIRECTA RWY 18 / Straight in RWY 18				Circulación Visual N.A.				
CAT	LNAV / VNAV		LNAV		Circle to land N.A.			
	DA 2600'	DH 310'	MDA 2660'	MDH 370'	Requiere certificación RNP APCH (LNAV)			
A	1400 M		VIS		APV / Baro VNAV (LNAV - VNAV)			
B					1900 M		Certification required RNP APCH (LNAV)	
C					2100 M		APV / Baro VNAV (LNAV - VNAV)	
D								

GS KT	90	110	130	150	160	DIST to MAPt	4.9	4	3	2	1
FAF - MAPt 4.9 NM	3:16	2:40	2:16	1:58	1:50	ALT	3900	3614	3295	2977	2660
FPM	480	580	690	800	850	HGT	(1610)	(1324)	(1005)	(687)	(370)

PANS OPS Cambios: NIL/Changes: NIL  
11 OCTUBRE 2018

DISEÑO EAMA S.E. - NAVEGACIÓN AEREA ARGENTINA  
DIRECCION REGULACION NORMAS Y PROCEDIMIENTOS - DNINA

<b>EL PLUMERILLO (SAME) RNP RWY 18 (LNAV/VNAV)</b>	
<b>FIX IDENT</b>	<b>COORDINATES</b>
SIREK	S 32°36'13.34" W 68°39'18.86"
LOMAD	S 32°39'07.89" W 68°47'24.73"
VAROR	S 32°44'14.58" W 68°47'29.28"
RW18	S 32°49'09.03" W 68°47'33.67"
ME304	S 32°53'09.84" W 68°47'37.26"
SUCUA	S 32°55'30.28" W 68°35'22.33"

DISEÑO EANA S.E.

11 OCTUBRE 2018

EL PLUMERILLO (SAME) RNP RWY 18 (LNAV/VNAV)											
Seq Num	Fix Ident	Path Terminator	Fly Distance (NM)	Course M° (T°)	Turn Altitude	Altitude Description	Speed Limit(Kt)	Navigation Specification	RNP	Dec (ARP 2017)	
010	SIREK	IF	-	N/A	N/A	6000 ft	+	-220	RNP APCH	1.0	0
020	LOMAD	TF	7.4	248 ( 247.0)	N/A	4500 ft	+	-180	RNP APCH	1.0	0
030	VAROR	TF	5.1	181 ( 180.7)	N/A	3900 ft	+	N/A	RNP APCH	1.0	0
040	RW18	TF	4.9	181(180.7 )	N/A	2340 ft	@	N/A	RNP APCH	0.3	0
050	ME304	CF	4.0	181 ( 181.1)	N/A	-	N/A	-210	RNP APCH	1.0	0
060	SUCUA	TF	10.6	103 ( 102.7)	N/A	-	N/A	-210	RNP APCH	1.0	0
070	SUCUA	HM	4.0	351(350.2 )	R	6000 ft	+	-210	RNP APCH	1.0	0

DIRECCIÓN REGULACIÓN NORMAS Y PROCEDIMIENTOS -DNINA

DISEÑO/EANA S.E. - NAVEGACIÓN AÉREA ARGENTINA

11 OCTUBRE 2018