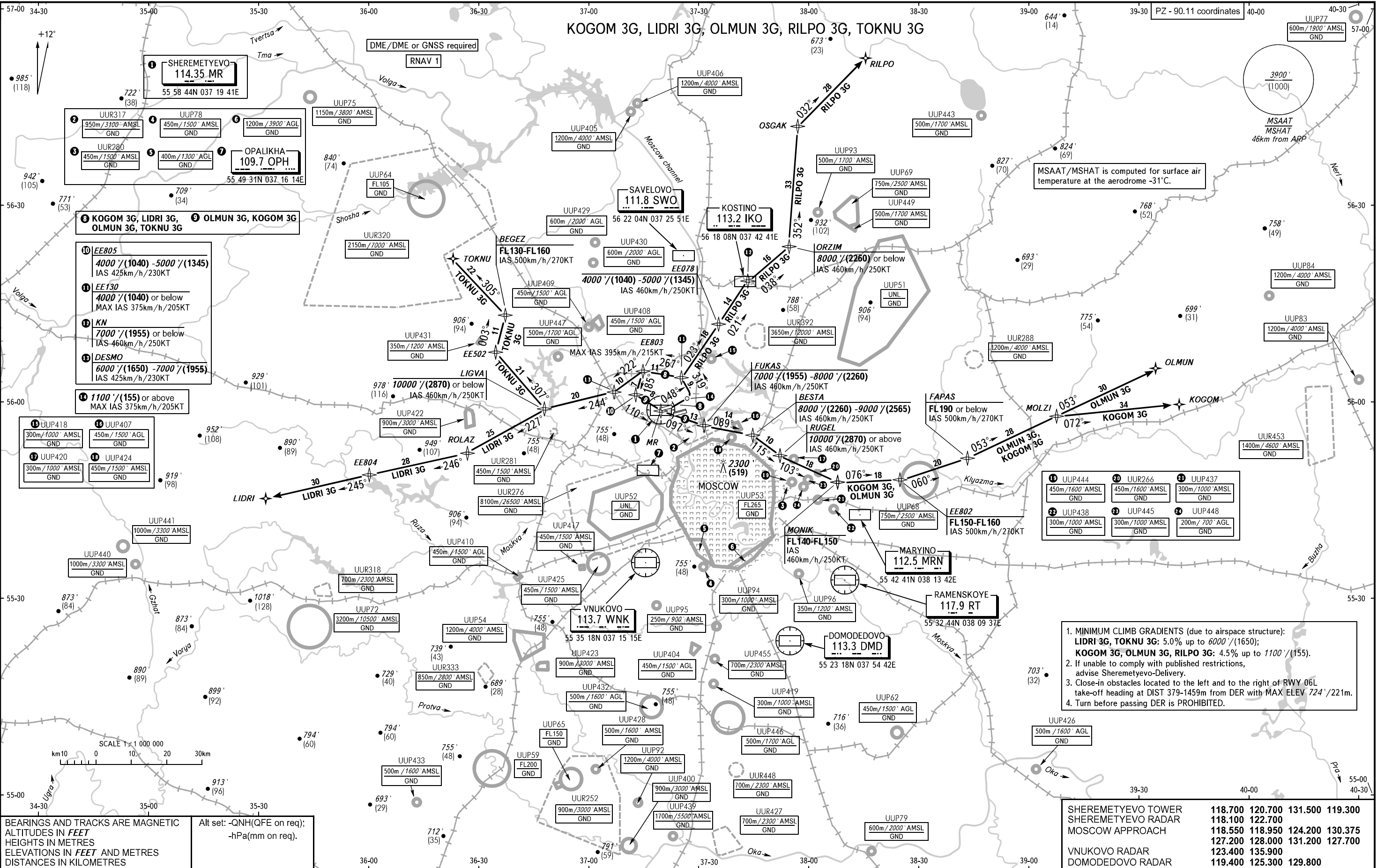


STANDARD DEPARTURE CHART
INSTRUMENT (SID) - ICAO

TRANSITION ALT: **10000'**
TRANSITION HGT: **(2870)**



1. MINIMUM CLIMB GRADIENTS (due to airspace structure):
LIDRI 3G, TOKNU 3G: 5.0% up to 6000'/(1650);
KOGOM 3G, OLMUN 3G, RILPO 3G: 4.5% up to 1100'/(155).
2. If unable to comply with published restrictions, advise Sheremetyevo-Delivery.
3. Close-in obstacles located to the left and to the right of RWY 06L take-off heading at DIST 379-1459m from DER with MAX ELEV 724' / 221m.
4. Turn before passing DER is PROHIBITED.

SHEREMETYEVO TOWER	118.700	120.700	131.500	119.300
SHEREMETYEVO RADAR	118.100	122.700		
MOSCOW APPROACH	118.550	118.950	124.200	130.375
VNUKOVO RADAR	123.400	135.900		
DOMODEDOVO RADAR	119.400	125.300	129.800	

BEARINGS AND TRACKS ARE MAGNETIC
ALTITUDES IN FEET
HEIGHTS IN METRES
ELEVATIONS IN FEET AND METRES
DISTANCES IN KILOMETRES

Alt set: -QNH(QFE on req);
-hPa(mm on req).