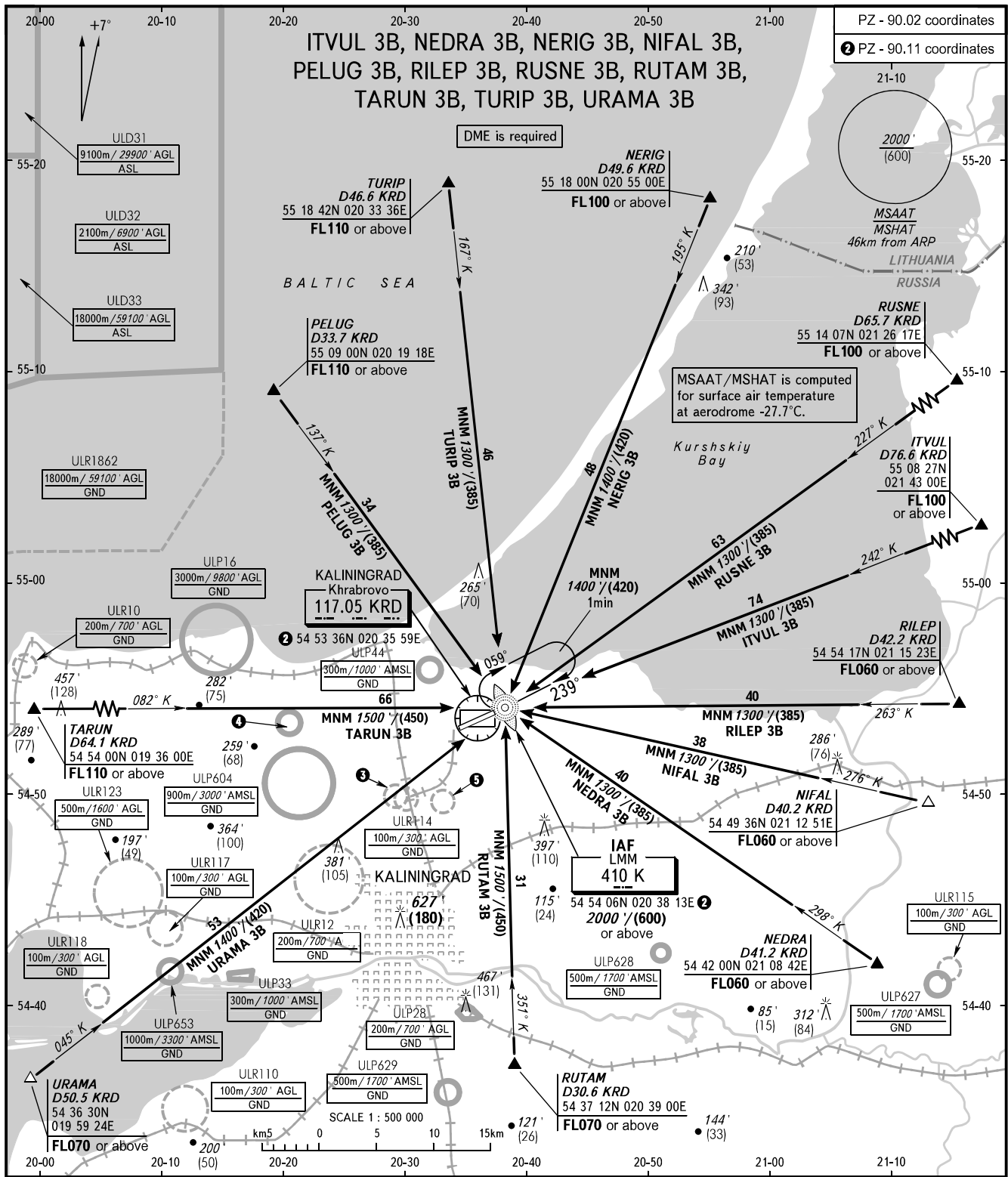


STANDARD ARRIVAL CHART
INSTRUMENT (STAR) - ICAO

KALININGRAD, RUSSIA
KHRABROVO
RWY 24

TRANSITION
LEVEL : 1



APPROACH	126.000	1 TRANSITION LEVEL: - FL050 when QNH is 1013 hPa (760mm mercury column) or above; - FL060 when QNH is 977 hPa (733mm mercury column) or above, but less than 1013 hPa (760mm mercury column); - FL070 when QNH is less than 977 hPa (733mm mercury column).
TOWER	127.200	
3 ULR113 100m/300' AGL GND		4 ULP626 500m/1700' AMSL GND
5 ULR111 100m/300' AGL GND		

BEARINGS AND TRACKS ARE MAGNETIC ALTITUDES AND ELEVATIONS IN FEET HEIGHTS IN METRES DISTANCES IN KILOMETRES
 Alt set: -QNH(QFE on req); -hPa(mm on req).