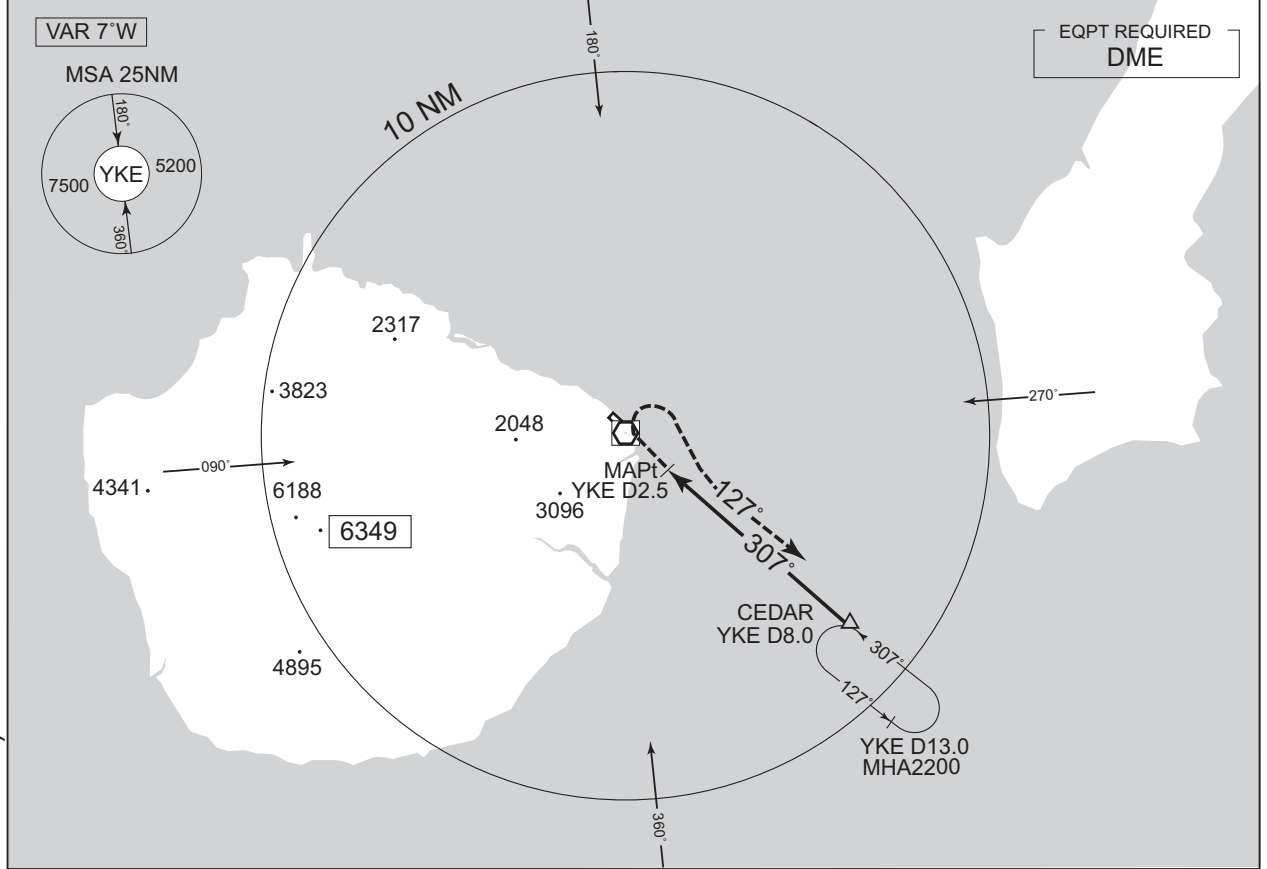


INSTRUMENT APPROACH CHART

RJFC / YAKUSHIMA

VOR RWY 32

KOBE CONTROL 133.85 - 315.3 134.6 - 225.65	YAKUSHIMA VOR/DME 117.0 YKE CH-117 $\equiv\equiv\equiv$ 30°22'46"N/130°39'46"E	YAKUSHIMA RADIO 118.65 AFIS provided by Kagoshima Airport Office	NO RADAR
--	---	---	----------



CHANGE : FREQ of KOBE CONTROL(127.15 → 134.6, 251.0 → 225.65).

MISSED APPROACH
 At 2.5 DME prior to YKE VOR/DME,
 turn right and climb to 2200FT via YKE
 R127 to CEDAR and hold.
 Contact YAKUSHIMA RADIO.

DME to YKE		2.5	8.0
------------	--	-----	-----

MINIMA		THR elev. 124	AD elev. 122	
CAT	CIRCLING			
	MDA(H)	CMV	MDA(H)	VIS
A	580 (458)	1500	660 (538)	1600
B			700 (578)	2400
C			-	-
D	-	-	-	-

Circling to EAST side of RWY only.