

STANDARD DEPARTURE CHART -INSTRUMENT

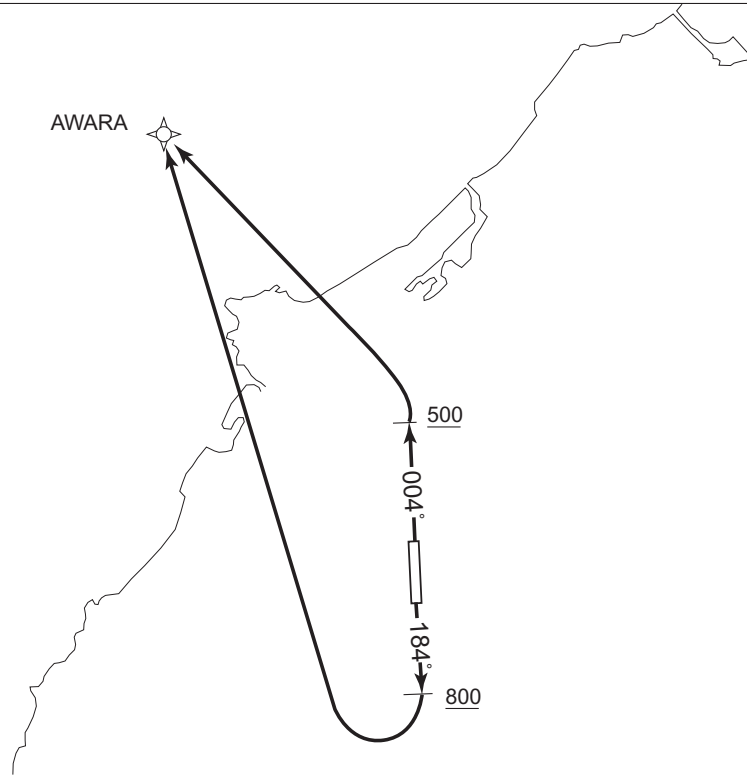
RJNF / FUKUI RNAV SID

AWARA ONE DEPARTURE

RNP1

Note GNSS required.

VAR 9° W



RWY18: Climb on HDG184° at or above 800FT, turn right direct to AWARA.
 RWY36: Climb on HDG004° at or above 500FT, turn left direct to AWARA.
 Note RWY18: 5.0% climb gradient required up to 1100FT.

RWY18

Serial Number	Path Descriptor	Waypoint Identifier	Fly Over	Course °M(°T)	Magnetic Variation	Distance (NM)	Turn Direction	Altitude (FT)	Speed (KIAS)	Vertical Angle	Navigation Specification
001	VA	—	—	184 (175.9)	-8.5	—	—	+800	—	—	RNP1
002	DF	AWARA	—	—	-8.5	—	R	—	—	—	RNP1

RWY36

Serial Number	Path Descriptor	Waypoint Identifier	Fly Over	Course °M(°T)	Magnetic Variation	Distance (NM)	Turn Direction	Altitude (FT)	Speed (KIAS)	Vertical Angle	Navigation Specification
001	VA	—	—	004 (355.9)	-8.5	—	—	+500	—	—	RNP1
002	DF	AWARA	—	—	-8.5	—	L	—	—	—	RNP1

Waypoint Coordinates

Waypoint Identifier	Coordinates
AWARA	361759.4N / 1360547.2E

CHANGE : VAR. Waypoint Coordinates added.