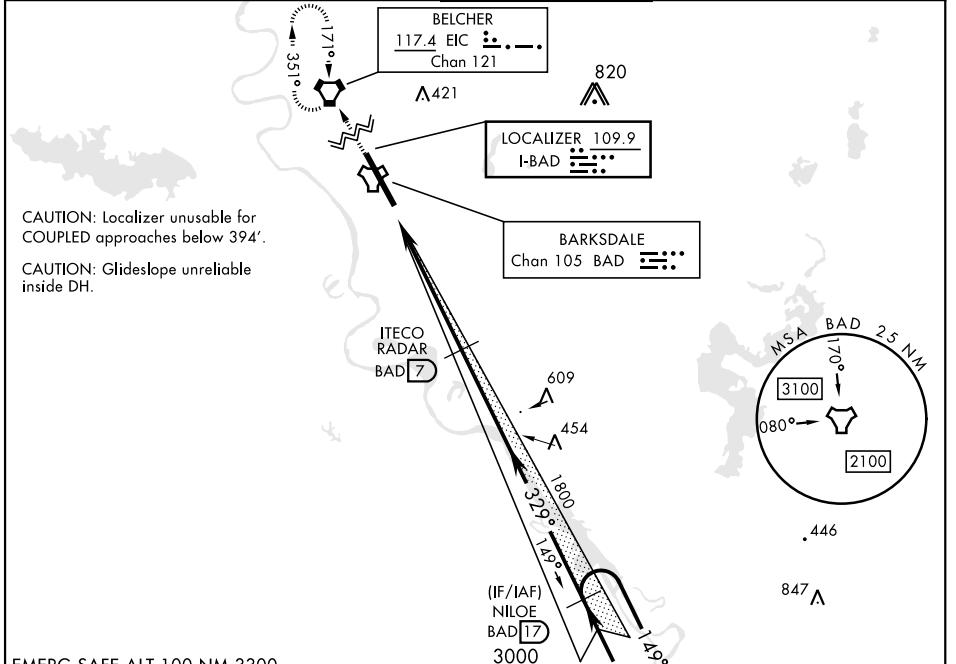


ILS or LOC W RWY 33

LOC I-BAD 109.9	APCH CRS 329°	Rwy Ldg THRE 11,758 Arprt Elev 165	[USAF]	BARKSDALE AFB (KBAD)
---------------------------	-------------------------	---	--------	----------------------

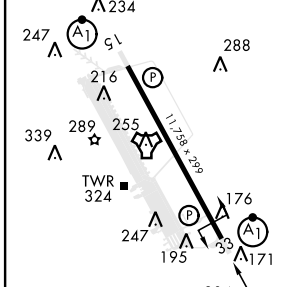
RADAR or DME required		ALSF-1 	MISSED APPROACH: Climb to 3100 direct EIC VORTAC and hold.
* When ALS inop, increase RVR to 40 and vis to 3/4 mile. ** When ALS inop, increase CAT AB RVR to 55 and vis to 1 mile, CAT, CDE RVR to 60 and vis to 1 1/2 miles. *** Circling not authorized W of Rwy.			

ATIS 307.025	SHREVEPORT APP CON 320°-152° 123.75 360.725 153°-319° 119.9 335.55	TOWER * 128.25 278.3	GND CON 121.8 253.5	ASR
------------------------	--	--------------------------------	-------------------------------	-----



EMERG SAFE ALT 100 NM 3300

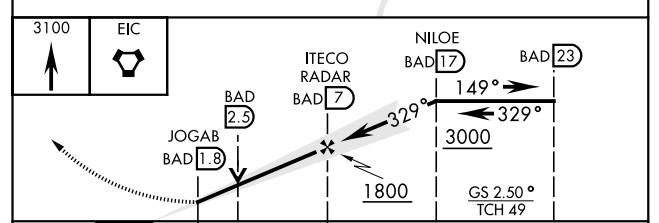
ELEV	165	THRE	161
------	-----	------	-----



HIRL Rwy 15-33

FAF to MAP 5.2 NM

Knots	60	90	120	150	180
Min:Sec	5:12	3:28	2:36	2:05	1:44



CATEGORY	A	B	C	D	E
----------	---	---	---	---	---

S-ILS 33 *	361/24		200	(200-1/2)	
------------	--------	--	-----	-----------	--

S-LOC 33 **	560/24	399 (400-1/2)	560/35	399	(400-5/8)
-------------	--------	---------------	--------	-----	-----------

CIRCLING ***	NOT AUTHORIZED			760-2 595 (600-2)	780-2 1/4 615 (700-2 1/4)
--------------	----------------	--	--	----------------------	------------------------------

ILS or LOC W RWY 33

SC-4, 20 MAR 2025 to 17 APR 2025

SC-4, 20 MAR 2025 to 17 APR 2025