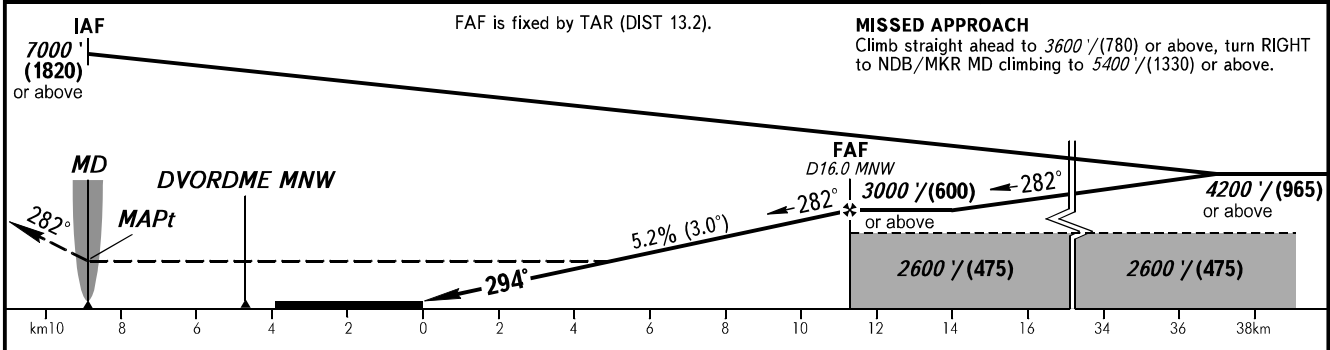
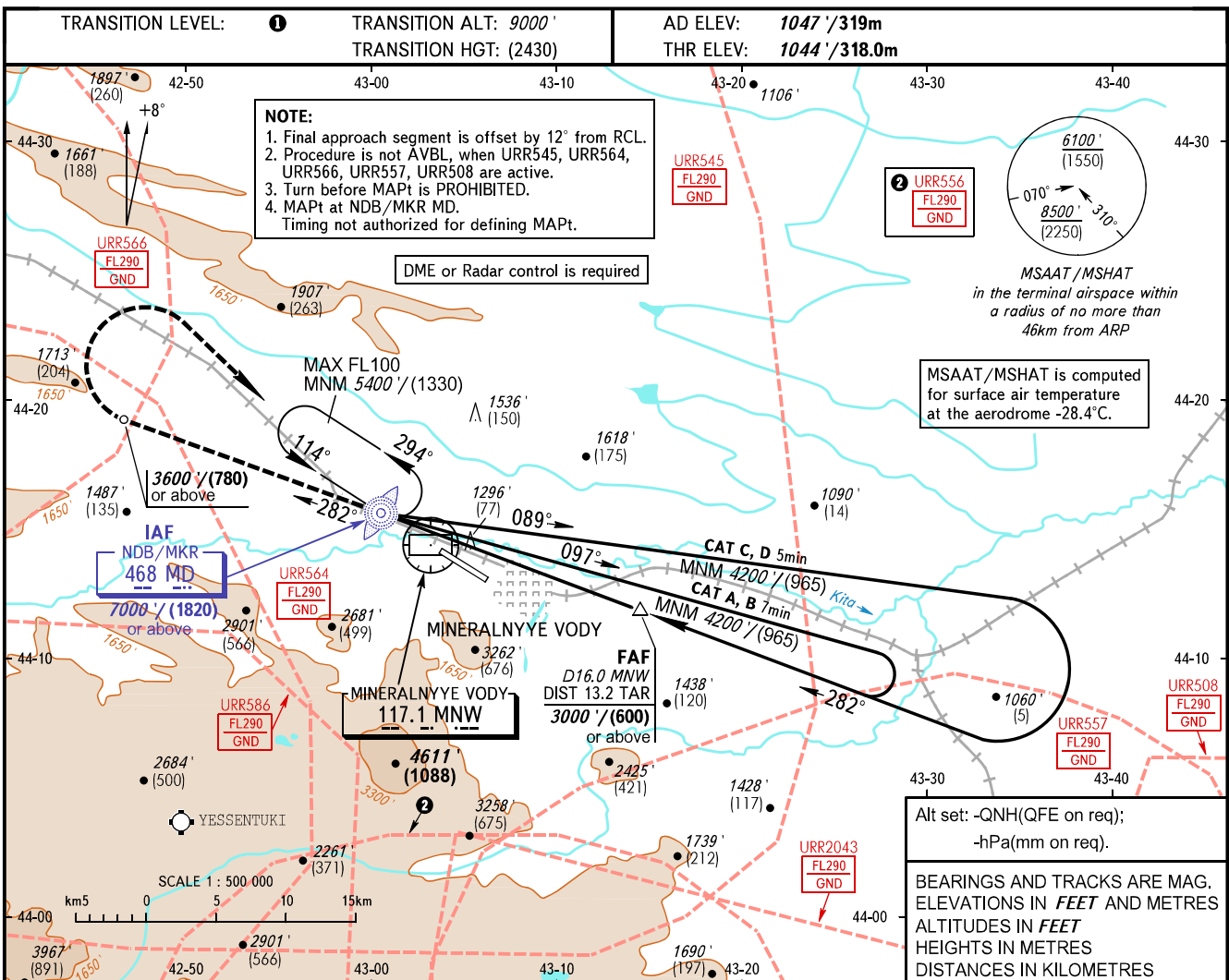


**INSTRUMENT  
APPROACH  
CHART - ICAO**

RADAR **120.700**  
START **128.000**

**MINERALNYYE VODY, RUSSIA**  
MINERALNYYE VODY  
NDB C RWY 29



	OCA(H)				① <b>TRANSITION LEVEL:</b> - FL100 when QNH is 1013 hPa (760mm mercury column) or above; - FL110 when QNH is 977 hPa (733mm mercury column) or above, but less than 1013 hPa (760mm mercury column); - FL120 when QNH is less than 977 hPa (733mm mercury column).				
	A	B	C	D					
Straight-in					Visual manoeuvring south of the AD is PROHIBITED.				
Approach									
Circling	2170' (1130') (345)	2170' (1130') (345)	2180' (1140') (350)	2320' (1280') (395)					
GROUND SPEED	km/h	150	180	210	240	270	300	330	360
	kt	81	97	113	130	146	162	178	194
RATE OF DESCENT	m/s	2.2	2.6	3.0	3.5	3.9	4.3	4.8	5.2
	ft/min	427	512	597	682	768	853	938	1024

CHANGE: New chart