

VOR/DME VCT	APP CRS	Rwy Idg	9111
109.0	127°	TDZE	115
Chan 27		Apt Elev	115

# VOR RWY 13

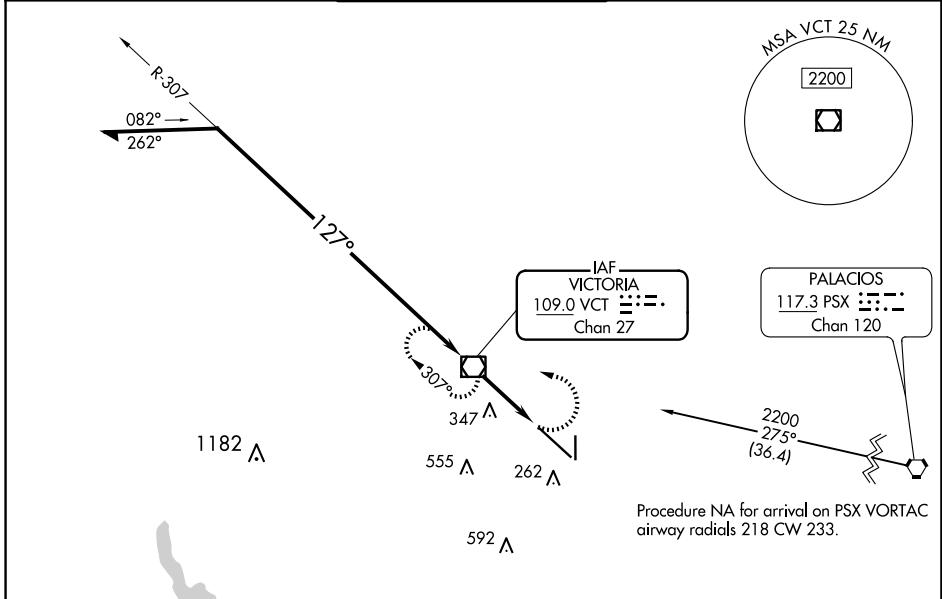
VICTORIA RGNL (VCT)

**⚠** For inop ALS, increase Cat C/D/E visibility to 1 3/8 SM.

**MALSR**

**MISSED APPROACH:**  
Climbing left turn to 2200  
direct VCT VOR/DME and  
hold, continue climb-in-hold  
to 2200.

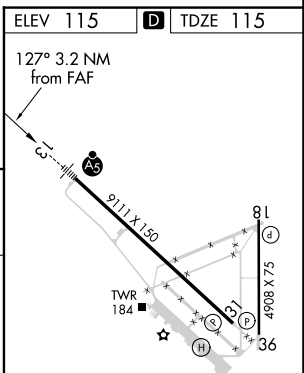
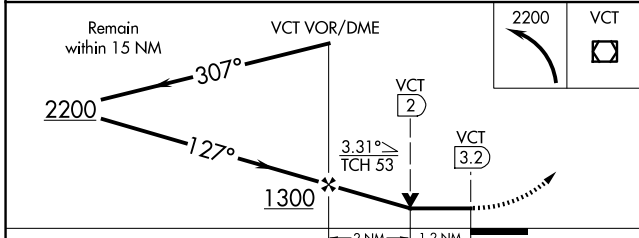
ATIS <b>119.025</b>	HOUSTON CENTER <b>135.05 353.6</b>	VICTORIA TOWER ★ <b>126.075 (CTAF) 0 257.95</b>	GND CON <b>120.525 239.25</b>	UNICOM <b>122.7</b>
------------------------	---------------------------------------	--	----------------------------------	------------------------



SC-5, 20 MAR 2025 to 17 APR 2025

SC-5, 20 MAR 2025 to 17 APR 2025

ELEV 115	<b>D</b> TDZE 115
----------	-------------------



CATEGORY	A	B	C	D	E
S-13	600-1/2	485 (500-1/2)	600-1	485 (500-1)	
<b>C</b> CIRCLING	600-1	485 (500-1)	820-2 705 (800-2)	880-2 1/2 765 (800-2 1/2)	NA

MIRL Rwy 18-36  
REIL Rwy 18 and 36  
HIRL Rwy 13-31

FAF to MAP 3.2 NM

Knots	60	90	120	150	180
Min:Sec	3:12	2:08	1:36	1:17	1:04